

The New Stabilwax® Bonded Packed Column

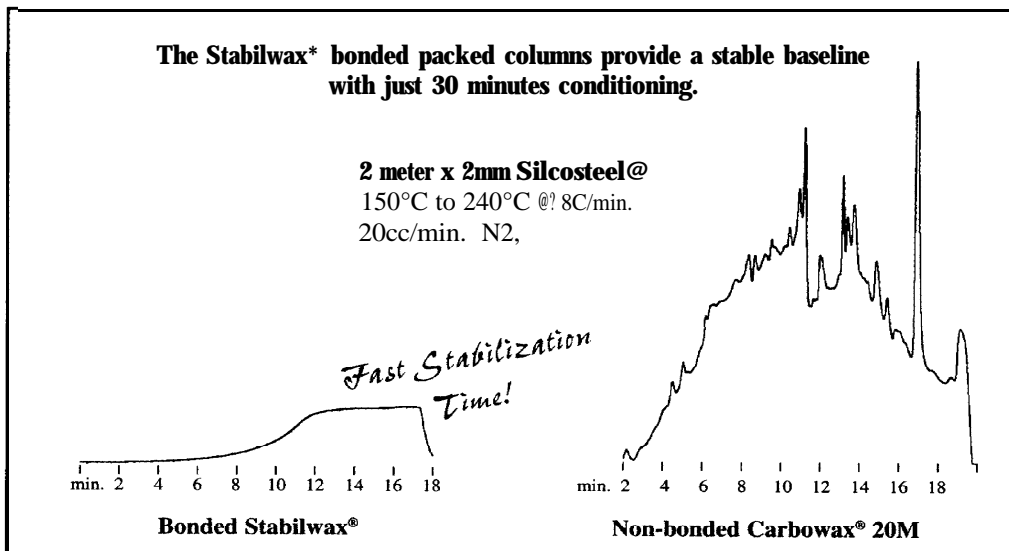
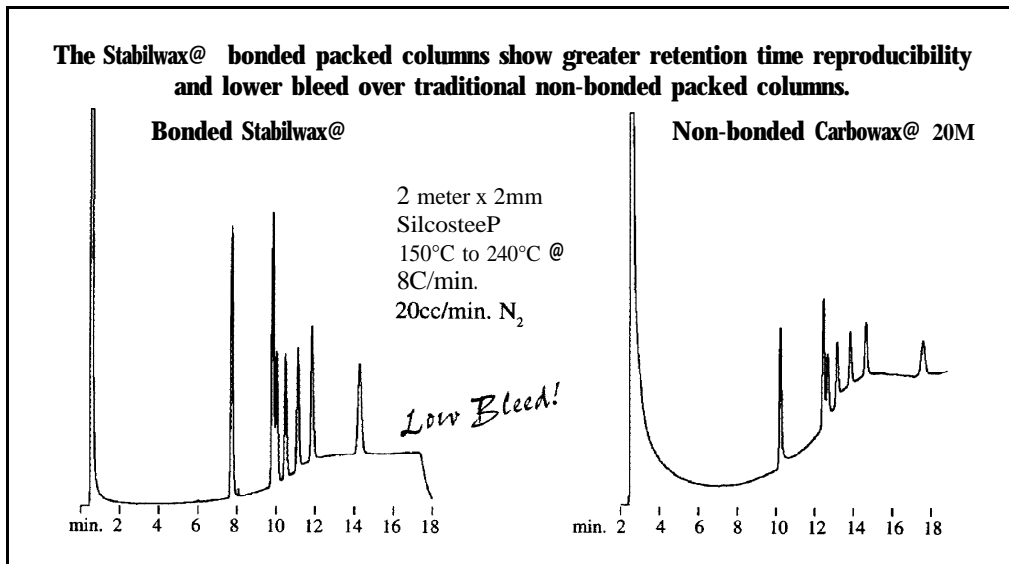


Restek advances packed column technology one step further with the introduction of the Stabilwax® bonded packed column. Traditionally, Carbowax® packed columns have been notorious for bleed and short lifetimes. With the Stabilwax® bonded packed column, these problems have been solved.

The Stabilwax® packed column is 100% bonded to the solid support. All low molecular weight material that would cause bleed and long conditioning times has been rinsed out. Also, the Stabilwax® packed column provides greater resistance to oxidation than non-bonded Carbowax® liquid phases.

Aqueous injections have shortened the lives of many Carbowax® packed columns. With the Stabilwax® packed column, this problem has been eliminated. The covalently linked liquid phase is not affected by the solvating effects water typically has on Carbowax® liquid phases.

Step up to the next level with Silcosteel® and bonded liquid phase packed columns. Your lab will enjoy the savings in time and money.



RETENTION INDICES AT 120°C

	benzene	n-butanol	pentanone	nitropropane	pyridine
CARBOXAX® 20M (NON BONDED)	475	1121	994	1235	1301
STABILWAX (BONDED)	983	1153	909	1227	1316

All on Silcoport® 100/120 mesh (bonded). Please include configuration suffix when ordering

Phase	Length	OD	ID	Cat.#
5% STABILWAX®	2.00M	1/8"	2MM	80415
10% STABILWAX®	2.00M	1/8"	2MM	80416
20% STABILWAX®	2.00M	1/8"	2MM	80417