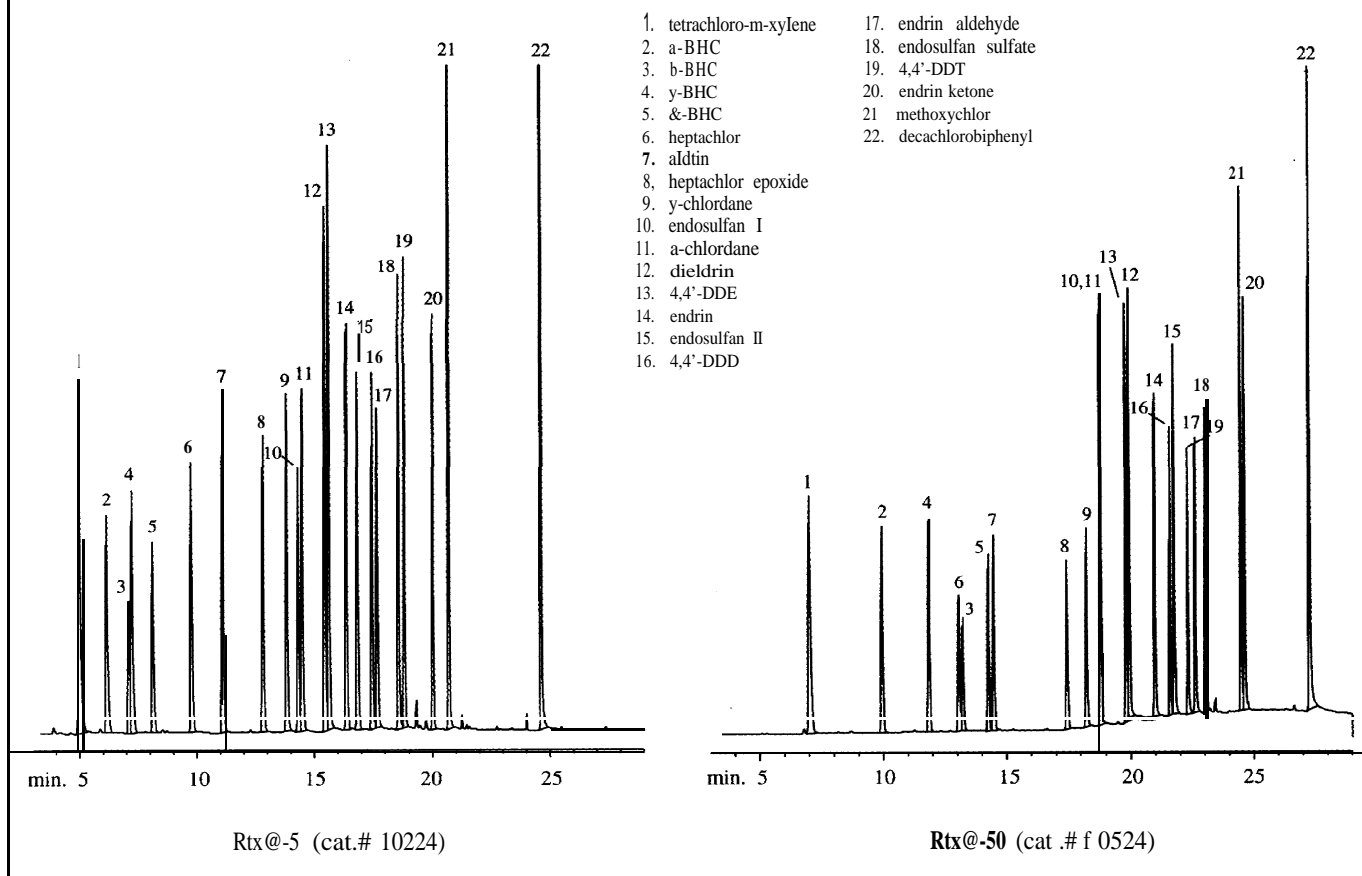




FIGURE 2: The Rtx[®]-5/Rtx[®]-50 column combination shows good resolution for chlorinated pesticide analysis.



CONDITIONS FOR FIGURE 2

30m, 0.32mm ID, 0.25µm
 1µl direct injection of organochlorine pesticides. Sample split to two columns using an angled "Y" Press-Tight™ connector (cat.# 20403) and a 5-meter guard column (cat.# 10044). Concentration 40-400pg on-column.

Oven temp.: 150°C (hold 2 min.) to 210°C @ 4°C/min. to 300°C @ 10C/min.

Inj./det. temp.: 225C/300C

Detector type: ECD

Carrier gas: He

Dead time: 1.2 min. @ 150°C

PRODUCT LISTING

Rtx[®]-5
30m, 0.32mm ID, 0.25µm:
 cat.# 10224, each

Rtx[®]-50
30m, 0.32mm ID, 0.25µm:
 cat.# 10524, each

5m, 0.32mm ID
Guard Column:
 cat.# 10044, each

UNIVERSAL ANGLED
"Y" PRESS-TIGHT™
 Connector:

cat.# 20403, ea 20404, 3-pk
"Y" VU_UNION Connector
 cat.# 20432, ea

Replacement Inserts
 cat.# 20433, ea 20434, 3-pk

PESTICIDE COLUMN
KIT (30m 0.32mm ID,
0.25µm Rtx[®]-5/Rt[®]-50 with

a 5m x 0.53mm ID Guard Column
("Y" Vu-Union)
 cat.# 52240-495, kit

(angled "Y" Press-Tight™)
 cat.# 52240-496, kit