

# Rxi<sup>®</sup>-5Sil MS

## Exceptionally Inert Columns for GC/MS and Trace Level Analyses

- **Low bleed** at high temperatures, for higher sensitivity and lower detection limits.
- **Excellent inertness** for acidic and basic compounds.
- Engineered to assure **column-to-column reproducibility**.

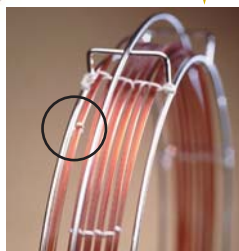
ID	df (μm)	temp. limits	length	cat. #	PRICE
0.18mm	0.18	-60 to 330/350°C	20-Meter	43602	\$455
0.18mm	0.36	-60 to 330/350°C	20-Meter	43604	\$455
0.25mm	0.25	-60 to 330/350°C	15-Meter	13620	\$330
0.25mm	0.25	-60 to 330/350°C	30-Meter	13623	\$530
0.25mm	0.25	-60 to 330/350°C	60-Meter	13626	\$905
0.25mm	0.50	-60 to 330/350°C	30-Meter	13638	\$530
0.32mm	0.25	-60 to 330/350°C	30-Meter	13624	\$570
0.32mm	0.50	-60 to 330/350°C	30-Meter	13639	\$570

### Rxi<sup>®</sup>-5Sil MS with Integra-Guard™

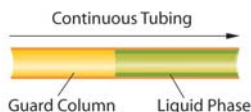
Description	qty.	cat.#	PRICE
15m, 0.25mm ID, 0.25μm Rxi-5Sil MS w/10m Integra-Guard Column	ea.	13620-127	\$410
30m, 0.25mm ID, 0.25μm Rxi-5Sil MS w/5m Integra-Guard Column	ea.	13623-124	\$610
30m, 0.25mm ID, 0.25μm Rxi-5Sil MS w/10m Integra-Guard Column	ea.	13623-127	\$630
30m, 0.25mm ID, 0.50μm Rxi-5Sil MS w/5m Integra-Guard Column	ea.	13638-124	\$610
30m, 0.25mm ID, 0.50μm Rxi-5Sil MS w/10m Integra-Guard Column	ea.	13638-127	\$630
30m, 0.32mm ID, 0.50μm Rxi-5Sil MS w/5m Integra-Guard Column	ea.	13639-125	\$655

Visit [www.restek.com/rxi](http://www.restek.com/rxi) for a complete listing of Restek's Rxi<sup>®</sup>-5Sil MS Columns!

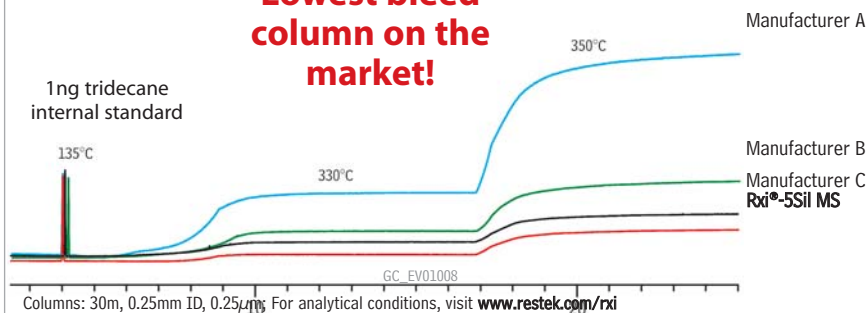
New Rxi<sup>®</sup>-5Sil MS columns outperform competitors, producing lower bleed at 300°C and 350°C than any other column on the market.



**Integra-Guard™  
built-in guard column**



**Lowest bleed  
column on the  
market!**



**RESTEK**

**HRoMalytic** +61(0)3 9762 2034 09  
AUSTRALIAN Distributors **ECHnology** [www.chromtech.net.au](http://www.chromtech.net.au)