

Genuine Restek Replacement Parts for Shimadzu GCs



HROMalytic Chromatography
Products '08
Australian Distributors **TECH**nology
www.chromtech.net.au E-mail : info@chromtech.net.au Tel : +61 3 9762 2034 Fax : +61 3 9761 1169



Chromatography Products
www.restek.com 800-356-1688 • 814-353-1300

From Injector to Detector

Restek is your #1 source for consumables and supplies for Shimadzu GCs!

Genuine Restek Replacement Parts

We take a position of advocacy through quality in the innovative manufactured products and the selected resale products we offer. Our reputation has been built on supplying superior-quality manufactured parts, accessories, and operating supplies for gas chromatography. We do whatever it takes to provide you with the best—from our own innovative designs to original equipment manufacturers' replacement parts. Our consumables and parts will help you maintain optimum system performance, and give you the convenience and economy of one-stop shopping for all your GC needs.



Donna Lidgett

Product Marketing Manager, GC Accessories
20+ Years of Service

Donna Lidgett

Content	Page
Restek Performance Coatings	1
Restek Electronic Leak Detector	2
Liner Deactivations	3
Inlet Liner Packing Materials & Accessories	4-5
Inlet Liners	6-7
Inlet Supplies	8
Septa	8
Column Installation Tools	9-11
Ferrules	12-13
Vu2 Union™ Column Connectors	14
SeCure™ "Y" Column Connectors	15
Press-Tight® Column Connectors	16
MXT™ Union Column Connectors	17
Ferrule Removal Kit	17
Super-Clean™ Gas Filter Systems	18-21
Gas Purifiers and Traps	22-23
FID Gas Generators	23
Gas Regulators	24
Tubing	24
Tubing Cutters and Supplies; Installation Kit	25
Vials	26-30
Crimpers & Decappers	31
Syringes & Needles	32-36

Restek Performance Coatings

As needs for improved performance of system components increase, coatings often are an effective solution. Restek's Performance Coatings Division specializes in innovative surface treatments for steel, stainless steel, alloys, glass, and other materials. Our surface treatments increase resistance to corrosion, reduce interactions between steel surfaces and active compounds, inhibit coking on process system surfaces, and offer many other advantages.

Restek's involvement in coatings began in 1987. The focus of our initial work was to produce a coating on stainless steel that would be inert to low levels of reactive organic compounds, such as explosives and volatile organic compounds (VOCs). The end product from this work was the Silcosteel® surface treatment for stainless steel tubing. Silcosteel® treated tubing currently is used for constructing analytical testing equipment by all major manufacturers of gas chromatography sampling and testing instruments.

Since this initial project, our coatings experts have developed a family of surface treatments to address other specific needs, and thereby enhance the performance of system components. Products of our processes are more correctly described as surface treatments, rather than as coatings, because, unlike coatings, the introduced layer permeates and chemically bonds to the treated surface. And unlike coatings, this layer cannot chip, flake, or blister. In brief, these treatments are:

- **Silcosteel®**—A general purpose passivation layer for steel and stainless steel. US Patent 6,511,760.
- **Siltek®**—The ultimate passivation of treated surfaces, from glass to high nickel alloys of steel. US Patent 6,444,326.
- **Silcosteel®-AC**—Dramatically reduces carbon buildup on stainless steel components. US Patent 6,444,326.
- **Silcosteel®-CR**—A corrosion resistant layer that increases the lifetime of system components in acidic environments containing hydrochloric acid, nitric acid, or seawater. US Patent 7,070,833.
- **Silcosteel®-UHV**—Greatly reduces outgassing from components of ultra-high vacuum systems. US Patent 7,070,833.
- **Sulfinert®**—A required treatment for metal components when analyzing for parts-per-billion levels of organo-sulfur compounds. US Patent 6,444,326.

Restek surface treatments are now used in many applications, spanning multiple industries and market areas. Restek coated components increase the lifetime of stack monitoring equipment. Treated injector nozzles have longer service life because coking is inhibited. Sulfinert® treated sampling equipment increases the reliability of process measurements in refineries and petrochemical plants. A mass spectrometer manufacturer demands Silcosteel® treated parts to increase instrument sensitivity for analyzing pesticides. Restek coated air sampling equipment is used in applications as diverse as sampling city air and monitoring submarine cabins.



it's a fact

All treatments are **total and uniform**: all pockets, holes, corners, and channels are coated evenly.

Siltek®/Sulfinert® Treatment

Feature	Benefit
Inert.	Sample, transfer, and analyze sulfur compounds and other active compounds at parts-per-billion levels.
Durable and flexible layer, incorporated into the surface.	Items can be worked after treatment—no flaking, chipping, or cracking.
Stable in acidic or weakly basic (pH 8-9) environments.	Sample sulfur compounds without compromising compound stability.
Tested thermal stability to 450°C in an inert atmosphere.	Effectively bake-out contaminants.
Non-polymeric.	No memory effects, as seen with Teflon®-coated parts.
Treated tubing and fittings in stock for immediate delivery.	Parts are available when you need them.



Siltek® treatment provides the ultimate passivation for many surfaces, from glass to high nickel alloys of steel.

HROMalytic Chromatography Products '08
Australian Distributors ECH nology
 www.chromtech.net.au E-mail : info@chromtech.net.au Tel : +61 3 9762 2034 Fax : +61 3 9761 1169

RESTEK

• www.restek.com

Restek Electronic Leak Detector



Small, compact unit—easy to hold and operate.

Restek Electronic Leak Detector

- Reliable thermal conductivity leak detector.
- Responds to leaks in less than 2 seconds.
- Audible alarm plus LED readout.
- Auto zeros with the touch of a button.
- Built-in rechargeable 9 volt battery.

Improve GC Performance; Save Your Column!

Avoid poor chromatography caused by leaks—leak check your GC system with the Restek Electronic Leak Detector, the affordable, reliable tool for detecting leaks. Features include internal battery charge capability, a low-battery indicator, a battery charge indicator light, yellow lights to signal a nitrogen leak, a repositioned on/off switch to eliminate accidentally powering on the unit, and a probe tip design that prevents debris from entering the unit. The leak detector's microchip technology enables high sensitivity in a compact unit, the autozero feature allows instantaneous zeroing with the touch of a button, and the ergonomic design puts all controls at your fingertips, for maximum ease of use.

Leaks can cause detector noise and baseline instability, waste carrier gas, and shorten column lifetimes, so leak checks should be a regular part of a GC maintenance program. The Restek Electronic Leak Detector responds in less than 2 seconds to leaks of gases with thermal conductivities different from air, indicating leaks with both an audible alarm and an LED readout. The leak detector detects minute gas leaks that can go undetected by liquid leak detectors. Never use liquid leak detectors on a capillary GC system; liquids drawn into the system through the leaks will contaminate the system.

How does the Restek Electronic Leak Detector work?

The Restek Electronic Leak Detector detects minute leaks of any gas with a thermal conductivity different from air. The reference gas inlet draws in ambient air for comparison to air drawn into the sample probe. A thermal conductivity difference between the two indicates a leak, and the leak is revealed to the user by both an LED bar graph and an audible tone. The leak detector operates on one rechargeable 9-volt Ni-MH battery (included).

tech tip

Avoid poor chromatography caused by leaks—leak check with the Restek Electronic Leak Detector.

Leak Detector Facts

Detectable gases:	helium, nitrogen, argon, carbon dioxide
Battery:	Rechargeable Ni-MH, 9 volt
Operating Temperature Range:	32°-120°F (0°-48°C)
Humidity Range:	0-97%
CE Approved:	Yes



Easy-to-clean probe assembly

Description	qty.	cat.#
Leak Detector with 110Volt Battery Charger	ea.	22451
Leak Detector with 220Volt European Battery Charger	ea.	22451-EUR
Leak Detector with 220Volt UK Battery Charger	ea.	22451-UK

Caution: The Restek Electronic Leak Detector is NOT designed for determining leaks of combustible gases. A combustible gas detector should be used for determining combustible gas leaks under any condition. The Restek Electronic Leak Detector may be used for determining trace amounts of hydrogen in a GC environment only.

Leak Detector Accessory Kit

The kit includes an adaptor fitting to detect leaks in hard-to-reach locations, and a mounting bracket that can be affixed to the wall or GC.



Verify hard-to-reach leaks with the adaptor fitting.



Leak Detector is easily accessed when stored in the mounting bracket.

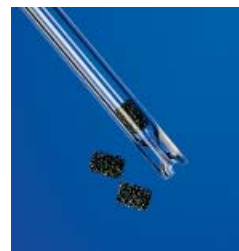
Description	qty.	cat.#
Leak Detector Accessory Kit (adaptor fitting for probe, mounting bracket)	kit	22453

tech tip

Avoid using liquid leak detectors on a capillary system! Liquids can be drawn into the system.

CarboFrit™ Inlet Liner Packing Material

- Highly inert.
- Extends analytical column lifetime.
- Enhances reproducibility of split and splitless injection.
- Uniform pore size and consistent packing density guarantee consistent flow through the liner.
- Easy to install in any liner with an ID >3.5mm when using puller-inserter tool listed below.*



Add the corresponding suffix number to the liner catalog number.

Description	suffix	
each	-209.1	addl. cost
5-pk.	-209.5	addl. cost
25-pk.	-209.25	addl. cost

*Liners with IDs less than 3.5mm are difficult to pack. We will pack them on a custom basis (minimum neck ID of 2mm required).

Replacement CarboFrit™ Inserts

Description	qty.	cat. #
Frits for liner ID ≤4mm	10-pk.	20295
Frits for liner ID >4mm	10-pk.	20294

CarboFrit™ Puller/Inserter Tool

- Hook end for removing CarboFrit™ inserts.
- Bent end (90°) for inserting CarboFrit™ inserts.

Description	qty.	cat. #
CarboFrit™ Puller/Inserter Tool	ea.	21642



a plus 1 story

“Restek sent us some carbon material (CarboFrit™) packing) with the suggestion to test it as liner packing. Initially, I didn’t even want to try it because carbon is usually highly retentive and catalytically active. As we nevertheless gave it a chance, we were highly surprised...it exhibited low retentive power and good inertness.”

excerpt from: *Sample Evaporation in Hot GC Injectors*,
Dr. Konrad Grob, *The Restek Advantage*, Winter 1996.

Deactivated Fused Silica Beads

- Increase sample vaporization surface and minimize splitter discrimination to improve quantitation of compounds having dissimilar boiling points.
- Trap non-volatile or inorganic residue to prevent column inlet contamination.
- Deactivated, heat-treated, and tested to ensure complete inertness.

Description	Mesh	qty.	cat. #
Deactivated Fused Silica Beads	60-80	25 grams	20791



Inlet Liner Removal Tool

- Easily remove liner from injector—no more burned fingers.
- Made from high-temperature silicone.
- Won’t chip or crack the liner.



No more burned fingers!

Description	qty.	cat. #
Inlet Liner Removal Tool	3-pk.	20181



tech tip

Use of Packings with Splitless Liners

We recommend using an injection port liner with wool or CarboFrit™ packing when making splitless injections with an autosampler. If there is no packing material in the liner, the solvent droplets act like water on a hot iron: they bounce around until vaporized (Leidenfrost phenomenon). Because autosamplers make rapid injections, samples can be incompletely vaporized, leading to non-reproducible peak response and tailing. You can prevent this by using wool or CarboFrit™ packing material in the splitless liner, to provide a surface for the solvent droplets to “sit” on until the heat from the injector vaporizes them.



Viton® O-Rings for Shimadzu 17A, 2010, and 2014 GCs

Description	Max. temp.	Similar to	qty.	cat.#
		Shimadzu part #		
Viton® O-Rings for Shimadzu 17A, 2010, and 2014 GCs	250°C	036-11203-84	10-pk.	21477



Graphite O-Rings for Shimadzu 17A, 2010, and 2014 GCs

Description	Max. temp.	Similar to	qty.	cat.#
		Shimadzu part #		
Graphite O-Rings for Split Liners	450°C	221-48393-91	5-pk.	20243
Graphite O-Rings for Splitless Liners	450°C	221-47222-91	5-pk.	20244



Plug Septa for Shimadzu GCs

Thermolite® Septa (useable to 340°C inlet temp.)		IceBlue™ Septa (useable to 250°C inlet temp.)		BTO® Septa (useable to 400°C inlet temp.)	
qty.	cat.#	qty.	cat.#	qty.	cat.#
25-pk.	27153	50-pk.	27170	50-pk.	27118
50-pk.	27154	100-pk.	27171	100-pk.	27119
100-pk.	27155				



Septum Nut for Shimadzu 17A, 2010, and 2014 GCs

- One piece design for ease of installation and removal.
- Made of clear anodized aluminum and high-quality stainless steel.

Description	Similar to	qty.	cat.#
	Shimadzu part #		
Septum Nut for Shimadzu 17A, 2010, and 2014 GCs	221-41286-00	ea.	22079
	221-44584-00		



Injector Nut Kit for Shimadzu 17A, 2010, and 2014 GCs

- Includes 17A injector nut, 0.4mm graphite ferrule, and 1/16-inch stainless steel capillary nut.

Description	qty.	cat.#
Injector Nut Kit for Shimadzu 17A, 2010, and 2014 GCs	kit	21895
Siitek® Treated Injector Nut Kit for Shimadzu 17A, 2010, and 2014 GCs	kit	22331



Capillary Nut for Shimadzu 17A, 2010, and 2014 GCs

- Meets OEM performance.

Description	Similar to	qty.	cat.#
	Shimadzu part #		
Capillary Nut for Shimadzu 17A, 2010, and 2014 GCs	221-41533-00	2-pk.	22688



Restek Enhanced Capillary Nut for Shimadzu 17A, 2010, and 2014 GCs

- Restek's design eliminates the slot, increasing lifetime and durability.
- Meets or exceeds OEM performance.

Description	Similar to	qty.	cat.#
	Shimadzu part #		
Restek Enhanced Capillary Nut for Shimadzu 17A, 2010, and 2014 GCs	221-41533-00	2-pk.	20375



5mm Ferrules for Shimadzu 17A GCs

- For use with packed columns.
- Graphite composition.

Description	qty.	cat.#
5mm Ferrules for Shimadzu 17A GCs	10-pk.	21121



5mm Stainless Steel Uniliner® Liner Adaptor Fitting for Shimadzu Packed Column GCs

Shimadzu GCs do not require a standard 1/4" Uniliner® liner adaptor because the injection port cavity will accept 5mm Uniliner® liners. This specially-designed fitting allows a Shimadzu packed column injection port to accept 0.53mm ID columns. Use a Shimadzu 5mm nut and ferrule to install the adaptor fitting into the injection port. Includes a 1/16-inch nut and 0.8mm ID graphite ferrule.

Description	qty.	cat.#
5mm Stainless Steel Uniliner® Liner Adaptor for Shimadzu Packed Column GCs (required for installing Uniliner® liners in 1/4" injection ports)	ea.	20312

Flashlight with Swivel Head

- Ideal for tight spaces—like inside a GC oven.
- Uses two AA batteries (included).



Description	qty.	cat.#
Flashlight with Swivel Head	ea.	22187

Septum Puller

- Keep several on hand in your laboratory—can be used in many different ways.
- Use hooked end for removing septa and O-rings; pointed end works well for removing stuck ferrules or fragments.



Remove septum without damaging an expensive weldment.



Dislodge a stuck ferrule quickly and easily—without scoring the fitting.



Description	qty.	cat.#
Septum Puller	ea.	20117

Stainless Steel Jet Reamers

A great tool for cleaning detector jets and other small orifices. Serrated design is optimal for removing silica deposits and other contaminants.



Description	qty.	cat.#
Stainless Steel Jet Reamers	6-piece set	20113

Open-End Wrench Set

High-quality 1/4" x 5/16", 3/8" x 7/16", 7/16" x 1/2", and 1/2" x 9/16" wrenches for tightening a wide variety of chromatograph and other fittings.



Description	qty.	cat.#
Open-End Wrench Set	set	20387

Open-End Wrenches

High-quality wrenches for tightening capillary fittings.



Description	qty.	cat.#
Open-End Wrenches (1/4" x 5/16")	2-pk.	20110
Open-End Wrenches (3/8" x 7/16")	2-pk.	22455

Open-End Wrench Set for use with Shimadzu 17A, 2010, and 2014 Capillary Installation Gauge

Description	qty.	cat.#
1/4" x 5/16" and 10mm x 11mm Open-End Wrench Set for use with Shimadzu 17A, 2010, and 2014 Capillary Installation Gauge	ea.	22334



Pocket Magnifier

- Small and easy to handle.
- 10X magnification makes it easy to see the column end to verify a square cut.

Description	qty.	cat.#
Pocket Magnifier	ea.	20124



Vespel® Ferrules

- 100% high-temperature polyimide.
- Stable to 350°C.
- Durable, leak-tight.



Vespel® ferrules

Graphite Ferrules

- Pre-conditioned to eliminate out-gassing.
- High-purity, high-density graphite.
- Smoother surface and cleaner edges than conventional graphite ferrules.
- Contain no binders that can off-gas or adsorb analytes.
- Stable to 450°C.

Vespel®/Graphite Ferrules

- 60%/40% Vespel®/graphite blend, offering the best combination of sealing and ease of workability.
- Seal with minimal torque, reusable, and preferred for vacuum and high-pressure uses.
- Stable to 400°C.
- Recommended for mass spec transfer lines.

Capillary Ferrules—For 1/16-Inch Compression-Type Fittings

Ferrule ID	Fits Column ID	qty.	Vespel®	Graphite	Vespel®/Graphite
0.3mm	< 0.18mm	10-pk.	22213	20233	20275
0.4mm	0.18/0.25/0.28mm	10-pk.	22214	20200	20211
0.4mm	0.18/0.25/0.28mm	50-pk.	—	20227	20229
0.5mm	0.32mm	10-pk.	22215	20201	20212
0.5mm	0.32mm	50-pk.	—	20228	20231
0.6mm	0.28mm**	10-pk.	—	—	20232
0.8mm	0.45/0.53mm	10-pk.	22216	20202	20213
0.8mm	0.45/0.53mm	50-pk.	—	20224	20230
1.0mm	0.75mm*	10-pk.	22217	21058	24912
1.2mm	0.75mm	10-pk.	22218	—	—
1.6mm	1.00mm*	10-pk.	—	21060	—

*For micropacked columns.

**For 0.28mm MXT® columns.



Encapsulated Ferrules—For 1/16-Inch Compression Fittings

- Reusable—will not deform and stick in fittings.
- Less torque needed to seal ferrule.
- Restek's unique blend of graphite minimizes fragmentation and outgassing.



Reusable!

Ferrule ID	Fits Column ID	qty.	cat.#
0.4mm	0.25mm	10-pk.	21036
0.5mm	0.32mm	10-pk.	21037
0.8mm	0.53mm	10-pk.	21038

Standard Ferrules—For 1/16-, 1/8-, and 1/4-Inch Fittings

Fitting Size	Ferrule ID	qty.	Vespel®	Graphite	Vespel®/Graphite
1/4"	3/16"	5-pk.	—	—	20258
1/16"	1/16"	10-pk.	22210	20207	20218
1/8"	1/8"	10-pk.	22211	20208	20219
1/8"	reduce to 1/16"	10-pk.	—	20209	20220
1/4"	1/4"	10-pk.	22212	20210	20221
1/4"	reduce to 1/8"	10-pk.	22219	20225	20222
1/4"	reduce to 1/16"	10-pk.	—	20226	20223



Two-Hole Ferrules—For 1/8-Inch and 1/16-Inch Compression-Type Fittings

Fitting Size	Ferrule ID	Fits Column ID	qty.	Vespel®/Graphite
1/16"	0.4mm	0.25/0.28mm	5-pk.	20241
1/16"	0.5mm	0.32mm	5-pk.	20242
1/8"	0.8mm	0.45/0.53mm	5-pk.	20246



Reducing Ferrules

Fitting Size	Ferrule ID	Fits Column ID	qty.	Graphite	Vespel®/Graphite
1/8"	0.4mm	0.25mm	5-pk.	20205	20254
1/8"	0.5mm	0.32mm	5-pk.	20205	20255
1/8"	0.8mm	0.53mm	5-pk.	20206	20215
1/4"	0.4mm	0.25mm	5-pk.	20203	—
1/4"	0.5mm	0.32mm	5-pk.	20203	20257
1/4"	0.8mm	0.45/0.53mm	5-pk.	20204	20217



Blank Ferrules—For 1/16-Inch Fittings

Fitting Size	Ferrule ID	qty.	Vespel®/Graphite
1/16"	no hole	10-pk.	20240



Alumaseal™ Ferrules*

- No more ferrule fragments in the transfer line; aluminum construction—will not crack or fragment.
- No retightening required after temperature cycles—excellent for GC/MS.
- Eliminate out-gassing, make leak-tight seals, for less detector noise.
- Unique two-piece design permanently locks on fused silica tubing without causing breakage.
- Will not stick in fittings, unlike Vespel® or graphite.
- Stable to 550°C.
- Use with any 1/16" compression-type fitting.

Ferrule ID	Fits Column ID	qty.	cat.#
0.4mm	0.25mm	10-pk.	21472
0.5mm	0.32mm	10-pk.	21473
0.8mm	0.53mm	10-pk.	21474

*Patent pending.



Teflon® Ferrules

- Upper temperature limit 250°C.
- 100% Teflon®; completely inert.
- One-piece design requires no back ferrule.

Fitting Size	Ferrule ID	qty.	cat.#
1/16"	1/16"	10-pk.	21122
1/16"	0.4mm	10-pk.	21123
1/16"	0.5mm	10-pk.	21124
1/16"	0.8mm	10-pk.	21125
1/8"	1/8"	10-pk.	21126
3/16"	3/16"	10-pk.	21127
1/4"	1/4"	10-pk.	21128



5mm Ferrules for Shimadzu 17A GCs

- For use with packed columns.
- Graphite composition.

Description	qty.	cat.#
5mm Ferrules for Shimadzu 17A GCs	10-pk.	21121



tech tip

Choosing the Right Ferrule

Although graphite and Vespel®/graphite ferrules each have advantages and disadvantages, the choice of ferrule composition is largely a personal preference.

Graphite ferrules are soft, easy to seal, stable to 450°C, and contain no binders that might off-gas.

Vespel®/graphite ferrules work better for vacuum and high-pressure applications (e.g., GC/MS) because they will not fragment or allow oxygen to permeate into the system, whereas graphite ferrules will. Because Vespel®/graphite ferrules are made from a harder material, they might require retightening after several temperature cycles.

Alumaseal™ ferrules are ideal for GC/MS. They will not crack or fragment and require no retightening after temperature cycles.

Vu2 Union™ Column Connectors



Patent pending.

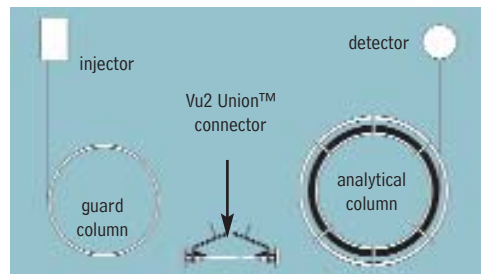
Secure, reliable column-to-column connections!

Vu2 Union™ Connectors

- Connect a guard column to an analytical column.
- Connect a column to a transfer line.
- Connect two columns in series.
- Repair a broken column.

Restek's Vu2 Union™ connector combines the simplicity of a Press-Tight® union with the strength of a metal union. The Vu2 Union™ connector reliably couples one analytical column to another, or to a transfer line or guard column. The columns cannot unexpectedly disconnect, even at temperatures as high as 400°C.

A guard column connected to an analytical column by a Vu2 Union™ connector.



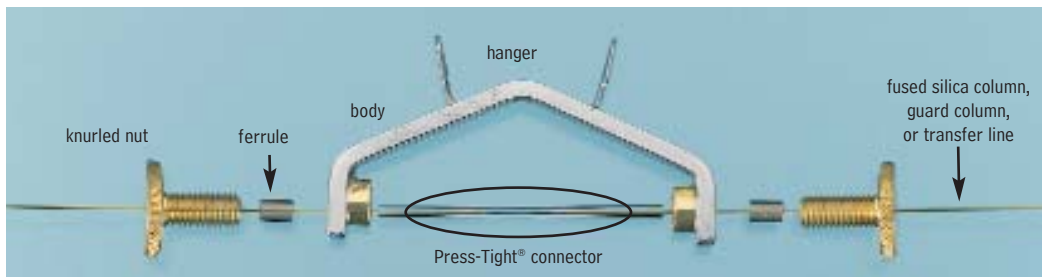
How does a Vu2 Union™ connector work?

A Press-Tight® union in the Vu2 Union™ connector joins the fused silica ends together; the ferrule and knurled nut at each end of the connector hold the tubing in place via a secondary seal between the ferrule and the Press-Tight® union. Each knurled nut applies independent pressure to each ferrule, to make a leak-tight seal with the column end. These ultra-strong connections will not unexpectedly disconnect under temperature changes, vibrations, or other stresses normally encountered in GC analyses. The open design allows visual confirmation of the seal between the column and the Press-Tight® union, to ensure confidence in the connection. Hang the connector from the column cage, to minimize stress on the connections.

Who will benefit from using Vu2 Union™ connectors?

Any analyst using guard columns, transfer lines, or restrictor tubing, performing a dual-column analysis with columns connected in series, or seeking to repair a broken column will find Vu2 Union™ connectors the simple, reliable, easy-to-use solution to their connection needs.

The Vu2 Union™ connector's open design allows visual confirmation of the seal; secondary seals ensure a leak-tight connection.



NOTE: Not recommended for GC column-to-MS connections—use the Vacuum Vu-Union® (see our general catalog or website).

Kits include: Vu2 Union™ body, 2 knurled nuts, 2 Press-Tight® unions, and 4 ferrules

Description	Ferrules Fit Column ID	qty.	cat.#
Vu2 Union™ Connector Kit	0.10/0.15mm	kit	22220
Vu2 Union™ Connector Kit	0.18/0.28mm	kit	21105
Vu2 Union™ Connector Kit	0.32mm	kit	21106
Vu2 Union™ Connector Kit	0.45/0.53mm	kit	21107
Knurled nut		2-pk.	21108

Universal Press-Tight® Connectors



Description	5-pk.	25-pk.	100-pk.
Universal Press-Tight® Connectors	20400	20401	20402
Deactivated, Universal Press-Tight® Connectors	20429	20430	20431
Siltek® Treated Universal Press-Tight® Connectors	20480	20449	20481

Graphite Ferrules for Vu2 Union™ Connectors

- High-purity, high-density graphite.
- Stable to 450°C.
- No binders that can off-gas or adsorb analytes.
- Smooth surface and clean edges.



Ferrule ID	Fits Column ID	Graphite 2-pk.	Graphite 10-pk.
0.3mm	0.10/0.15mm	22221	22222
0.4mm	0.18/0.28mm	20280	20281
0.5mm	0.32mm	20282	20283
0.8mm	0.45/0.53mm	20284	20285



Universal Press-Tight® Connectors

- Connect a guard column to an analytical column.
- Repair a broken column.
- Connect a column outlet to a transfer line.
- Deactivated Press-Tight® connectors assure better recovery of polar and non-polar compounds.
- Siltek® treated connectors are ideal for organochlorine pesticides analysis.
- Fit column ODs from 0.33–0.74mm (Restek 0.1mm–0.53mm ID).

Description	5-pk.	25-pk.	100-pk.
Universal Press-Tight® Connectors	20400	20401	20402
Deactivated, Universal Press-Tight® Connectors	20429	20430	20431
Siltek® Treated Universal Press-Tight® Connectors	20480	20449	20481



Universal Angled Press-Tight® Connectors

- Ideal for connecting a guard column to an analytical column.
- Made from inert fused silica.
- Angle approximates the curvature of a capillary column, reduces strain on column-end connections.
- Deactivated Press-Tight® connectors assure better recovery of polar and non-polar compounds.
- Siltek® treated connectors are ideal for organochlorine pesticides analysis.
- Fit column ODs from 0.33–0.74mm (Restek 0.1mm–0.53mm ID).

Description	5-pk.	25-pk.	100-pk.
Universal Angled Press-Tight® Connectors	20446	20447	20448
Deactivated Universal Angled Press-Tight® Connectors	20446-261	20447-261	20448-261
Siltek® Treated Universal Angled Press-Tight® Connectors	20482	20483	20484



Universal "Y" Press-Tight® Connectors

An alternative method of performing dual-column confirmational analyses!

- Split sample flow onto two columns.
- Split a single column flow to two detectors—perform confirmation analysis with a single injection.
- Deactivated Press-Tight® connectors assure better recovery of polar and non-polar compounds.
- Siltek® treated connectors are ideal for organochlorine pesticides analysis.
- Fit column ODs from 0.33–0.74mm (Restek 0.1mm–0.53mm ID).

Description	ea.	3-pk.
Universal "Y" Press-Tight® Connector	20405	20406
Deactivated Universal "Y" Press-Tight® Connector	20405-261	20406-261
Siltek® Treated Universal "Y" Press-Tight® Connector	20485	20486



Universal Angled "Y" Press-Tight® Connectors

- Perform confirmation analysis with a single injection.
- Made from inert fused silica.
- Inlet and outlet ends conform to the column curvature—alleviates column-end connection strain.
- Deactivated Press-Tight® connectors assure better recovery of polar and non-polar compounds.
- Siltek® treated connectors are ideal for organochlorine pesticides analysis.
- Fit column ODs from 0.33–0.74mm (Restek 0.1mm–0.53mm ID).

Description	ea.	3-pk.
Universal Angled "Y" Press-Tight® Connector	20403	20404
Deactivated Universal Angled "Y" Press-Tight® Connector	20403-261	20404-261
Siltek® Treated Universal Angled "Y" Press-Tight® Connector	20487	20469



Universal "X" Press-Tight® Connectors

- Connect a column to three detectors.
- Connect a column to two detectors and a sniffer port.
- Split sample flow onto three columns.
- Deactivated Press-Tight® connectors assure better recovery of polar and non-polar compounds.
- Fit column ODs from 0.33–0.74mm (Restek 0.1mm–0.53mm ID).

Description	ea.	3-pk.
Universal "X" Press-Tight® Connector	20407	20408
Deactivated Universal "X" Press-Tight® Connector	20407-261	20408-261
Siltek® Treated Universal "X" Press-Tight® Connector	20407-266	20408-266



Polyimide Resin

- Permanently connects a Press-Tight® connector to a fused silica column.

Description	Max. Temp.	qty.	cat.#
Polyimide Resin	350°C	5 grams	20445



Super-Clean™ Gas Filters

- High-purity output ensures 99.9999% pure gas.
- “Quick connect” fittings for easy, leak-tight cartridge changes.
- Glass inside to prevent diffusion; plastic outside for safety.

Designed for fast, simple cartridge changing

Cartridge systems make changing gas filters quick and easy, and Super-Clean™ gas filters are the latest in cartridge-style gas filtration. A baseplate allows cartridges to be exchanged without introducing oxygen. Spring-loaded check valves seal when a filter is removed and open only when a new filter has been locked in place. There is no longer a need for loosening and tightening fittings every time a trap is changed, and your system will not become contaminated during the process.

With available 2- or 3-position baseplates, you can purify all GC gas streams at one location. Figure 1 shows some possible filter cartridge combinations using these baseplates. Any combination is possible because any Restek Super-Clean™ filter cartridge can be used with any Restek baseplate.

High-purity output for improved sensitivity (Table I)

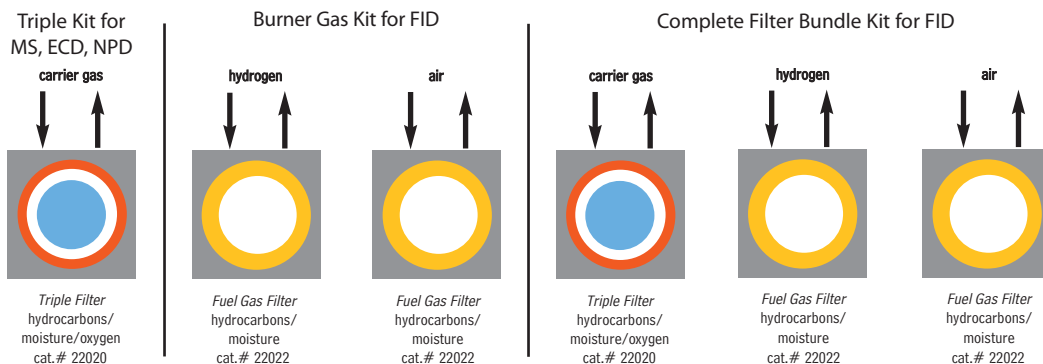
The Triple Filter cartridge (cat.# 22020) is ideal for purifying carrier gas. This trap contains oxygen, moisture, and hydrocarbon scrubbers in one cartridge. The purity of your carrier gas after flowing through the Triple Filter is better than six-9s (99.9999% pure), which is ideal for sensitive mass spectrometry (MS) or ECD analyses, and for protecting your analytical columns against damage from contaminated carrier gas.

The Fuel Gas Filter cartridge (cat.# 22022) is perfect for purifying flame ionization detector (FID) fuel gases, removing both moisture and hydrocarbons. Using the Fuel Gas Filter for FID hydrogen and air will produce a stable baseline, improving overall reproducibility and sensitivity.

did you know?

All Super-Clean™ filter cartridges (except hydrocarbon filter cat.# 22030) feature easy-to-read indicators. The indicator code is shown on every trap so there is no confusion about when to replace it.

Figure 1 Filter cartridges can be configured for different applications.



tech tip

Oxygen and Moisture Traps

We highly recommend oxygen and moisture traps for make-up gas when operating sensitive detectors such as electron capture detectors (ECD). The hydrogen reaction gas for sensitive electrolytic conductivity detectors (ELCD) also requires a hydrocarbon trap, to remove trace impurities.

Table I Each Super-Clean™ filter provides high-purity outlet gas.

Type of Filter	Outlet Gas Quality (%)	Maximum Pressure/ Maximum Flow Rates	Use for:	Indicator Color Change	Capacity			Estimated Lifetime (years)
					H ₂ O (g)	O ₂ (mL)	Hydrocarbons (g)	
Moisture cat.# 22028	>99.9999	11 bar 159psi/ 7 L/min.	Inert carrier gas Air Hydrogen	Yellow to clear	7.2	—	—	>2
Oxygen cat.# 22029	>99.9999	11 bar 159psi/ 7 L/min.	Inert carrier gas	Green to grey	NA	1000	—	>2
Hydrocarbons cat.# 22030	>99.9999	11 bar 159psi/ 7L/min.	Inert carrier gas Air Hydrogen	No indicator	NA	—	12 ³	>2
Fuel Gas ¹ cat.# 22022	>99.9999	11 bar 159psi/ 7L/min.	Inert carrier gas Air Hydrogen	Yellow to clear	3.5	—	24 ³	>1.5
Triple ² cat.# 22020	>99.9999	11 bar 159psi/ 7L/min.	Inert carrier gas	Yellow to clear Green to grey	1.8	500	4 ³	>1
Helium Specific ² cat.# 21982	>99.9999	11 bar 159psi/ 7L/min.	Helium	Yellow to clear Green to grey	1.8	500	—	>1

¹Removes hydrocarbons, moisture.

²Removes hydrocarbons, moisture, oxygen.

³As *n*-butane.

Super-Clean™ Filter and Baseplate Kits

Description	qty.	cat.#
Carrier Gas Cleaning Kit (includes mounting baseplate, 1/8" inlet/outlet fittings, and oxygen/moisture/hydrocarbon Triple Filter)	kit	22019
Fuel Gas Purification Kit (includes mounting baseplate, 1/8" inlet/outlet fittings, and hydrocarbon/moisture Fuel Gas Filter)	kit	22021



All traps measure: 10⁵/₈" x 1³/₄"
(27 x 4.4 cm)
Each baseplate unit measures:
4" x 4" x 1⁷/₈"
(10.2 x 10.2 x 4.8 cm)

Replacement Filters

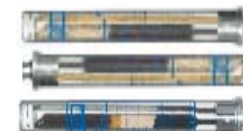
Description	qty.	cat.#
Replacement Triple Filter (removes oxygen, moisture and hydrocarbons)	ea.	22020
Replacement Fuel Gas Filter (removes moisture and hydrocarbons)	ea.	22022



Filter Bundle Kit

Kit includes two Fuel Gas Filters for FID fuel gases and one Triple Filter for carrier gas.

Description	qty.	cat.#
Filter Bundle Kit	kit	22031



Super-Clean™ Ultra-High Capacity Filters

Description	qty.	cat.#
Ultra-High Capacity Hydrocarbon Filter	ea.	22030
Ultra-High Capacity Moisture Filter	ea.	22028
Ultra-High Capacity Oxygen Filter	ea.	22029



Helium-Specific Super-Clean™ Filter and Kit

- Specifically designed for purification of helium in GC/MS systems.
- Traps are packed and conditioned using helium.
- Uses standard single-position baseplate.

Description	qty.	cat.#
Helium-Specific Carrier Gas Cleaning Kit (includes mounting baseplate, 1/8" inlet/outlet fittings, and oxygen/moisture/hydrocarbon Helium-Specific Filter)	kit	21983
Replacement Helium-Specific Filter (removes oxygen, moisture and hydrocarbons)	ea.	21982



Baseplates

Standard baseplate fittings are 1/8". To adapt to 1/4", order 1/8" to 1/4" tube-end unions (cat. # 21833, below).

Description	qty.	cat.#
Single-Position Baseplate	ea.	22025
2-Position Baseplate	ea.	22026
3-Position Baseplate	ea.	22027



Wall Mounting Bracket

Baseplates can be mounted by using screws and the mounting holes on the baseplate, or by using this optional wall mounting bracket.

Description	qty.	cat.#
Wall Mounting Bracket for Super-Clean™ Baseplates	ea.	21984



Replacement O-Rings for Cartridge Baseplates

Pack includes 10 large O-rings and 10 small O-rings.

Description	qty.	cat.#
Replacement O-Rings for Cartridge Baseplates	20-pk.	22023



1/8-Inch to 1/4-Inch Tube-End Unions

To adapt 1/8" Super-Clean™ baseplate fittings to 1/4", use 1/8" to 1/4" tube-end unions.

Description	qty.	cat.#
1/8" to 1/4" Tube-End Unions	5-pk.	21833



Click-On Inline Super-Clean™ Replacement Traps

Description	qty.	cat.#
Click-On Super-Clean™ Replacement Triple Trap (removes oxygen, moisture and hydrocarbons)	ea.	22464
Click-On Super-Clean™ Replacement Fuel Gas Trap (removes moisture and hydrocarbons)	ea.	22465



Click-On Inline Super-Clean™ Ultra-High Capacity Traps

Description	qty.	cat.#
Ultra-High Capacity Hydrocarbon Trap	ea.	22466
Ultra-High Capacity Moisture Trap	ea.	22467
Ultra-High Capacity Oxygen Trap	ea.	22468



Helium-Specific Click-On Inline Super-Clean™ Trap and Connector Kits

Description	qty.	cat.#
Kits Helium-Specific Carrier Gas Cleaning Kit, 1/8" Stainless Steel Includes (2) 1/8" SS connectors and (1) oxygen/moisture/hydrocarbon helium-specific triple trap	kit	22469
Helium-Specific Carrier Gas Cleaning Kit, 1/8" Brass Includes (2) 1/8" brass connectors and (1) oxygen/moisture/hydrocarbon helium-specific triple trap	kit	22470
Helium-Specific Carrier Gas Cleaning Kit, 1/4" Stainless Steel Includes (2) 1/4" SS connectors and (1) oxygen/moisture/hydrocarbon helium-specific triple trap	kit	22471
Helium-Specific Carrier Gas Cleaning Kit, 1/4" Brass Includes (2) 1/4" brass connectors and (1) oxygen/moisture/hydrocarbon helium-specific triple trap	kit	22472
Replacement Trap Helium-Specific Replacement Triple Trap (removes oxygen, moisture and hydrocarbons)	ea.	22473

did you know?

Helium-Specific Click-On Inline Super-Clean™ Trap and Kits are designed specifically for purification of helium in GC/MS systems!



Click-On Inline Super-Clean™ Indicator

- Oxygen: Green to Grey
- Moisture: Beige to Clear

Description	qty.	cat.#
Click-On Inline Super-Clean™ Indicator (oxygen, moisture)	ea.	22474

tech tip

Install an indicator after the Click-On inline filter so there is no confusion about when to replace the traps.



Click-On Inline Super-Clean™ Connectors

- Click-On connectors allow you to change traps quickly, without introducing oxygen into your system.

Description	qty.	cat.#
1/8" Brass Click-On Inline Super-Clean™ Connectors	2-pk.	22475
1/8" Stainless Steel Click-On Inline Super-Clean™ Connectors	2-pk.	22476
1/4" Brass Click-On Inline Super-Clean™ Connectors	2-pk.	22477
1/4" Stainless Steel Click-On Inline Super-Clean™ Connectors	2-pk.	22478



Click-On Inline Super-Clean™ Double Connector

- Connects any Click-On trap to a Click-On indicator.

Description	qty.	cat.#
Click-On Inline Super-Clean™ Double Connector, stainless steel	ea.	22479



Wall-Mounting Clamps for Click-On Inline Super-Clean™ Traps

Description	qty.	cat.#
Wall-Mounting Clamps for Click-On Inline Super-Clean™ Traps	4-pk.	22480



Replacement O-Rings for Click-On Inline Super-Clean™ Connectors

- Pack includes 10 large O-rings and 10 Small O-rings.

Description	qty.	cat.#
Replacement O-Rings for Click-On Inline Super-Clean™ Connectors	20-pk.	22481



Gas Purifiers / Traps



Dimensions: 21" x 1 1/2"
(53.3 x 3.8 cm)

Please Note: We recommend using an indicating oxygen trap (e.g., cat.# 22029, pg. 19) downstream from a VICI® Mat/Sen® purifier to continually ensure gas purity and indicate absolute change-out time.

VICI® Mat/Sen® Gas-Specific Purifier Modules

- Replace separate oxygen, moisture, and hydrocarbon traps with one multiple-bed purifier, specific for purifying helium, hydrogen, nitrogen, or air.
- Reduce gas impurities from ppm to low ppb levels.
- Decrease baseline noise and increase GC/MS sensitivity.
- Pre-purged with the specified gas, to shorten downtime.

These gas-specific purifier modules offer dramatic reductions in contaminant levels—from ppm to levels that are below the limit of standard analytical detection. Performance is optimized by incorporating a multiple-bed format that progressively lowers concentrations of contaminants at each successive bed. VICI® Mat/Sen® purifiers are guaranteed to produce gases that are purer than 99.9999%, when supplied with gas of 99.995% purity, and are pre-purged with the specified gas to speed conditioning. Purifier capacity is approximately four tanks of gas at 99.995% (50ppm) purity, and correspondingly longer for purer gases.

Specifications:

Length:	21" (52.3cm)	Pressure Drop from 120psi (827 kPa)	
Diameter:	1.5" (3.8cm)	inlet at a flow of 0-500mL/min.:	<0.20psi (2.1kPa)
Maximum Inlet Pressure:	1000psi (6895 kPa)	Compression End Fittings:	1/8" or 1/4", stainless steel
Maximum Recommended Flow:	500mL/min.	Shipping Weight:	3.04 lb. (1300 g)

it's a fact

The nitrogen module is excellent for LC/MS systems.

Gas-Specific Purifier Module

	Compression Tube Fittings			
	1/4-inch		1/8-inch	
	qty.	cat.#	qty.	cat.#
Helium Purifier Module	ea.	22600	ea.	22601
Hydrogen Purifier Module	ea.	22602	ea.	22603
Nitrogen Purifier Module*	ea.	22604	ea.	22605
Air Purifier Module	ea.	22606	ea.	22607

*Warning: Do not use with nitrogen containing more than 500ppm of oxygen. If the oxygen level in the stream exceeds 500ppm, use an air purifier.



Dimensions: 10" x 1 1/4"
(25.4 x 3.2 cm)

Indicating Oxygen Trap

- Indicator changes color from light green to grey as oxygen is trapped.
- Heavy-walled glass body prevents oxygen & water infusion.
- Pre-purged for fast stabilization.
- 100psig maximum operating pressure.
- Reduces oxygen to 0.1ppm.

Description	qty.	cat.#
Indicating Oxygen Trap, 1/8" Fittings	ea.	22010
Indicating Oxygen Trap, 1/4" Fittings	ea.	22011

High-Capacity Oxygen Trap

- Removes up to 600mg of oxygen or 2g of water.
- Long life—typically purifies more than five 200ft³ cylinders.
- Reduces oxygen to 15ppb.
- Maximum operating pressure: 250psi.
- Flow: 3L/min. @ 32psi.

Description	qty.	cat.#
High-Capacity Oxygen Trap, 1/8" Fittings	ea.	20601
High-Capacity Oxygen Trap, 1/4" Fittings	ea.	20600



Dimensions: 11" x 1 1/2"
(27.9 x 3.8 cm)

GC/MS Compatible

High-Capacity Moisture Trap

- Purged with ultra-high-purity helium; ready to use.
- Reduces water to less than 15ppb.
- Maximum operating pressure: 250psi.
- Maximum flow: 1.25L/min.

Description	qty.	cat.#
High-Capacity Moisture Trap, 1/8" Fittings	ea.	21997
High-Capacity Moisture Trap, 1/4" Fittings	ea.	20638



Dimensions: 11" x 1 1/2"
(27.9 x 3.8 cm)

Indicating Moisture Trap

- Reduces water to less than 10ppb; indicator changes color from blue to pink at 5% relative humidity.
- Pre-purged for fast stabilization.
- Reduces noise from high-sensitivity detectors.
- Heavy-walled glass body prevents oxygen & water infusion.
- 40µm frit prevents microparticulate damage to needle valves and flow controllers.
- Maximum operating pressure: 100psig.



Dimensions: 13" x 2"
(33 x 5.1 cm)

Description	qty.	cat.#
Indicating Moisture Trap, 1/8" Fittings	ea.	22014
Indicating Moisture Trap, 1/4" Fittings	ea.	22015

Capillary-Grade Hydrocarbon Trap

- Packed with an extremely high surface area, baked coconut shell-based activated carbon.
- Purged with ultra-high-purity helium.
- Reduces organics to 0.1ppm (assuming 100ppm input).
- Maximum operating pressure: 250psi.



Dimensions: 11" x 1 1/2"
(27.9 x 3.8 cm)

Description	qty.	cat.#
Capillary-Grade Hydrocarbon Trap, 1/8" Fittings	ea.	21991
Capillary-Grade Hydrocarbon Trap, 1/4" Fittings	ea.	21992

Model FID-1000 and FID-2500 Gas Stations

- Single unit produces UHP zero air from house compressed air and 99.9995% pure hydrogen from deionized water.
- Ideal for supplying up to 5 - 6 FIDs.
- Eliminates inconvenient and dangerous cylinders.
- Silent operation, minimal operator attention required.



Parker Balston's Gas Stations provide both UHP grade hydrogen fuel gas and zero grade air for flame ionization detectors on gas chromatographs. The system is specifically designed to supply fuel gas to FIDs and to support flame thermionic and flame photometric detectors. The units produce zero air by purifying compressed air to a total hydrocarbon concentration of 0.1ppm or less (measured as methane).

Specifications	
Hydrogen Purity:	99.9995%
Zero Air Purity:	FID-1000: < 0.1ppm total hydrocarbons as methane FID-2500: < 0.05ppm total hydrocarbons as methane
Max. Hydrogen Flow Rate:	FID-1000: 90cc/min. FID-2500: 250cc/min.
Max. Zero Air Flow Rate:	FID-1000: 1000cc/min. FID-2500: 2500cc/min.
Power:	120VAC/amp, 60Hz, 400 watts
Hydrogen Outlet Pressure:	60 psig
Zero Air Outlet Pressure:	40-125 psig*
Inlet Connection:	1/4" NPT (female)
Outlet:	1/8" compression
Dimensions:	16.5"h x 10.5"w x 17"d (42cm x 27cm x 43cm)
Weight:	53 lbs. (24kg)



CE

Produce zero air and pure hydrogen from one unit!

The hydrogen generators produce hydrogen gas from deionized water, using the principle of electrolytic dissociation of water and hydrogen proton conduction through a proton exchange membrane cell.

Description	qty.	cat.#
Model FID-1000 Gas Station (ideal for 1 - 2 FIDs)	ea.	20177
Model FID-2500 Gas Station (ideal for 5 - 6 FIDs)	ea.	24913

Replacement Components for FID Gas Stations

Resin Bed Cartridge for Hydrogen Generators in FID-1000 and FID-2500 Gas Stations	ea.	24914
Replacement Desiccant Cartridge	ea.	21671
FID Gas Station Maintenance Kit (Includes 1 desiccant cartridge, 1 resin bed cartridge, 1 filter cartridge)	ea.	24915

*Zero air inlet requires minimum of 40psig compressed air pressure.

International Power Cord Sets

Just add the proper suffix to the catalog number for the gas generator you are ordering.

Location	qty.	cat.# suffix
United Kingdom (230VAC, 50/50Hz)	ea.	-550
European (230VAC, 50/60Hz)	ea.	-551
IEC Connector Only (230VAC, 50/60Hz)	ea.	-552
Japanese (200VAC, 50/60Hz)	ea.	-556
Japanese for Zero Air (100VAC, 50/60Hz)	ea.	-553
Japanese for Hydrogen (100VAC, 50/60Hz)	ea.	-554
Japanese for Nitrogen (100VAC, 50/60Hz)	ea.	-555

free literature

For more information, download a free copy of our *FID Gas Stations Fast Facts* from www.restek.com

lit. cat.# 580051

8mm Screw-Thread Vials

Screw-Thread Vials, 12 x 32mm, 8mm/425 Thread

Fit all 2.0mL, 12 x 32mm, Screw-Thread Vial-Based Autosamplers.

These vials provide the most secure environment for your sample, because evaporation is minimized. We offer both deactivated (on request) and non-deactivated vials.



8mm (2.0mL)
Screw-Thread Vial

Screw-Thread Vials—12 x 32mm, 8mm/425 Thread

Description	100-pk.	1000-pk.
2.0mL Clear Vial, White Graduated Marking Spot	24619	24620
2.0mL Amber Vial, White Graduated Marking Spot	24621	24622

8mm Pre-Assembled Caps and Septa

Description	100-pk.	1000-pk.
8/425 Black Cap w/ Red PTFE/Silicone Septa, 0.065"	21149	21720
8/425 Black Top Hat™ PTFE/Silicone Septa	21721	21722

Pre-Assembled Vial Kits: 8mm/425 Screw-Thread, Unmarked Vials, Septa, and Caps

Caps attached to vials.

Description	100-pk.	1000-pk.
Clear Vial, Black Cap, Red PTFE/Silicone Septa, 0.045"*	24630	24631
Amber Vial, Black Cap, Red PTFE/Silicone Septa, 0.045"*	24632	24633
Clear Vial, Black Cap, Red PTFE/Silicone Septa, 0.065"	24634	24635
Amber Vial, Black Cap, Red PTFE/Silicone Septa, 0.065"	24636	24637

*Best fit for Shimadzu.

Convenience Kits: Vials w/Pre-Assembled Caps and Septa Packed Separately

(Black Polypropylene Open-Hole Caps and 8mm Red PTFE/Silicone Septa, 0.065")

Vials packaged in a clear-lid tray. Caps with septa packaged in a plastic bag.

Description	100-pk.	1000-pk.
2.0mL Clear Vial, Silcote™ CL7-Deactivated	24638	24639
2.0mL Amber Vial, Silcote™ CL7-Deactivated	24640	24641
2.0mL Clear Vial, untreated	21192	21193
2.0mL Amber Vial, untreated	21194	21195

8mm/425 Thread Polypropylene Caps for 8mm Screw-Thread Vials

Description	100-pk.	1000-pk.
Black, Open-Hole Cap	21176	21177

Septa for 8mm Screw-Thread Vials

Description	100-pk.	1000-pk.
8mm x 0.045" Red PTFE/Silicone	21178	21179
8mm x 0.065" Red PTFE/White Silicone	21795	21147

Limited Volume Inserts for 8mm/425 Screw-Thread Vials

Description	100-pk.	1000-pk.
100µL Glass w/ Polypropylene Bottom Spring	24508	21775
250µL Glass, Flat Bottom	—	24510
250µL Glass, Flat Bottom w/ ID Ring	—	24691
100µL Polypropylene, No Spring	24511	—
100µL Polypropylene, Bottom Spring	24512	—

Limited Volume Vials, 12 x 32mm, 8mm/425 Thread

Description	100-pk.	1000-pk.
100µL Polypropylene	24623	24624
100µL Glass Insert/Clear Plastic Vial*	24625	—

*Amber glass/clear plastic available on request (1000 packs only).



Flat Bottom Limited
Volume Insert w/ ID Ring



instrument [reference](#)

For 8mm Screw-Thread Vials

Manufacturer	Instrument/Model #
Shimadzu	AOC-8B/9, SIL-6A, AOC14/1400, AOC-17, SIL-6B, -9A, -8A, SIL-10A, 10Ai, 10AxL

9mm Short-Cap, Screw-Thread Vials, 12 x 32mm, 9mm Opening

Fit all 2.0mL, 12 x 32mm, Crimp-Top Vial Based Autosamplers.

- Shorter screw cap allows the robotic autosampler to function properly.
- Wider opening prevents syringe problems.
- Dimensions are effectively identical to the crimp-top vial.
- Variety of colors and liner material.

Are you tired of dealing with crimp-top vials, but worried about using screw-thread vials with your autosampler? If you want the performance of a crimp-top vial with the convenience of a screw-thread vial, these vials are the answer for you.



Ideal for autosamplers that process 12 x 32mm crimp-top vials.

9mm Short-Cap, Screw-Thread Vials, 12 x 32mm, 9mm Opening

Description	100-pk.	1000-pk.
2.0mL Clear Vial, w/White Graduated Marking Spot	21140	21141
2.0mL Amber Vial, w/White Graduated Marking Spot	21142	21143
2.0mL Clear Vial, without Graduated Marking Spot	21154	21155

9mm Thread Pre-Assembled Short-Cap, Screw-Vial Closures

Description	100-pk.	500-pk.	1000-pk.
Blue Cap, PTFE/Red Rubber Liner	24473	—	24474
Mixed Colors, PTFE/Red Rubber Liner	—	24668	—
Blue Cap, PTFE/Silicone Liner	24485	—	24486
Green Cap, PTFE/Silicone Liner	24487	—	24488
Yellow Cap, PTFE/Silicone Liner	24493	—	24494
Mixed Colors, PTFE/Silicone Liner	—	24669	—
Blue Cap, PTFE/Silicone/PTFE Liner	24497	—	24498
Black Cap, PTFE/Silicone/PTFE Liner	24495	—	24496
Mixed Colors, PTFE/Silicone/PTFE Liner Cap	—	24670	—

instrument reference

For 9mm Short-Cap, Screw-Thread Vials

Manufacturer	Instrument/Model #
Shimadzu	SIL-10A, 10Ai, 10AxL

Screw-Thread Vials, 12 x 32mm, 10mm/425 Thread, Big Mouth Step™ Design

- 40% larger opening than other vials.
- Step™ profile automatically centers glass flange limited volume inserts.
- Pre-assembled caps with septa, with or without vials.
- Designed for Waters Alliance® autosamplers.

The Big Mouth Step™ Vial System has a larger ID than conventional vials and incorporates a neck finish that is uniquely designed to allow the insert to be precisely aligned in the center of the vial. This precise alignment provides maximum sample withdrawal and eliminates any chance of missed injections. All vials with the large opening are designed with the Step™ Vial System.

Big Mouth Step™ Screw-Thread Vials (12 x 32mm, 10mm/425 Thread)

Description	100-pk.	1000-pk.
2.0mL Clear Step™ Vial, White Graduated Marking Spot	24626	24627
2.0mL Amber Step™ Vial, White Graduated Marking Spot	24628	24629



10mm Pre-Assembled Big Mouth Step™ Vial Kits (w/Black Cap)

Caps attached to vials.

Description	100-pk.	1000-pk.
2.0mL Clear Vial, PTFE/Silicone/Red PTFE Septa, 0.040"	24675	24676
2.0mL Clear Vial, Red PTFE/Silicone Septa, 0.065"	24642	24643
2.0mL Amber Vial, Red PTFE/Silicone Septa, 0.065"	24644	24645

instrument reference

For 10mm Screw-Thread Vials

Manufacturer	Instrument/Model #
Shimadzu	SIL-10A, 10Ai, 10AxL

Hand-held Rechargeable Crimpers and Rechargeable Decappers

- Easy to use; comfortable grip.
- Hundreds of operations from one charge.
- Adjustable crimping force.
- All kits include battery charger.



Powered by a standard Black and Decker Versapak® battery, these electronic tools for 11mm or 20mm caps will cycle hundreds of times on a single charge. The cycle is controlled precisely, through an internal counter, and is adjusted with two buttons on the side of the case. The tools fit comfortably in the hand and weigh approximately 600 grams. The jaws can be positioned easily around closely-spaced vials in standard autosampler trays. Each kit includes the tool, a Versapak® Gold rechargeable battery, which uses environmentally friendly NiMH technology, and a charger. Recharging generally takes 6-9 hours.

The Electronic Crimper fits around vials in standard autosampler trays. The adjustable setting provides a precision crimp, vial after vial.



Decapping has never been easier!

one...



two...



three!



Description	qty.	cat.#
11mm Electronic Crimper (110 volt battery charger)	kit	22853
11mm Electronic Crimper (220 volt European battery charger)	kit	22853-EUR
11mm Electronic Crimper (220 volt UK battery charger)	kit	22853-UK
11mm Electronic Decapper (110 volt battery charger)	kit	22854
11mm Electronic Decapper (220 volt European battery charger)	kit	22854-EUR
11mm Electronic Decapper (220 volt UK battery charger)	kit	22854-UK
20mm Electronic Crimper (110 volt battery charger)	kit	22851
20mm Electronic Crimper (220 volt European battery charger)	kit	22851-EUR
20mm Electronic Crimper (220 volt UK battery charger)	kit	22851-UK
20mm Electronic Decapper (110 volt battery charger)	kit	22852
20mm Electronic Decapper (220 volt European battery charger)	kit	22852-EUR
20mm Electronic Decapper (220 volt UK battery charger)	kit	22852-UK



did you know?

Syringes and needles manufactured by Hamilton Company and SGE are intended for scientific research and laboratory use only and are not intended for human *in vivo* use.

Restek offers complementing lines of syringes from Hamilton & SGE.

- Hamilton: The historical leader in precision fluid measuring devices for more than 50 years, with a commitment to precision, quality, and accuracy.
- SGE: More than 35 years of providing a comprehensive range of analytical syringes unsurpassed in design, quality, and performance.

Needle Gauge Chart

Gauge	Nominal OD		Nominal ID	
26s	0.019 in.	0.47mm	0.0050 in.	0.13mm
26	0.018 in.	0.46mm	0.0102 in.	0.26mm
25	0.021 in.	0.51mm	0.0102 in.	0.26mm
23s	0.025 in.	0.64mm	0.0060 in.	0.15mm
23	0.025 in.	0.64mm	0.0132 in.	0.34mm
22s	0.028 in.	0.72mm	0.0060 in.	0.15mm
22	0.028 in.	0.72mm	0.0162 in.	0.41mm

Needle Point Style

Restek offers several different point styles on syringe and needle products. Choose one depending on your application.



Point Style 2, BV: beveled needle tip. Recommended for optimum septum penetration and prevention of septum coring.



Point Style 3, LC: square/blunt needle tip. For use with HPLC injection valves and for sample pipetting.



Point Style 5: conical needle with side hole. Liquid samples are filled and dispensed through the side hole.



Point Style H: domed needle tip with a side hole. Liquid samples are filled and dispensed through the side hole. The solid tip minimizes septum damage.



Point Style Agilent/Cone: Special conical style needle point used exclusively on syringes for autosamplers.

Syringe Termination

From cemented to removable needles and from Teflon® luer-lock to special syringe fittings, syringe barrel terminations create the interface between a syringe and its mating connection. For your reference, we have listed the Hamilton/SGE designations for the most common terminations below.



N, Cemented Needle / F, Fixed:

Needle cemented into the glass syringe barrel at a point corresponding to the zero graduation mark. Not autoclavable.



KH, Knurled Hub / R, Removable:

Used on 7000 Series Hamilton syringes, exclusively. Knurled hub enables 6000 psig maximum injection pressures and the attachment of a spacer for repeatable-depth injections. Autoclavable when disassembled.



RN, Removable Needle / R, Removable:

Needle seats precisely to the zero graduation mark of the syringe. Allows the use of different specification needles on the same syringe barrel. Autoclavable when disassembled.



TLL, Teflon® Luer-Lock / LL, Luer Lock / LT, Luer Tip:

Male luer taper with nickel-plated brass hub accepts and locks into place luer hub needles and connectors. Autoclavable when disassembled.

Teflon® Tip, Gas-Tight Syringes

- Suitable for gases or liquids for maximum inertness.
- High accuracy of dispensed volumes.
- Interchangeable barrels, plungers, and tips extend performance and increase cost-effectiveness.



Hamilton 1700/1000 Series Gas-Tight Syringe

Hamilton Syringes

Volume	Needle Term.	Needle Gauge	Needle Length	Point Style	Hamilton		Restek
					Model	cat.#	
10µL	N	26s	2"/51mm	2	1701	80000	ea. 24557
10µL	RN	26s	2"/51mm	2	1701	80030	ea. 24558
25µL	N	22s	2"/51mm	2	1702	80200	ea. 24559
25µL	RN	22s	2"/51mm	2	1702	80230	ea. 24560
50µL	N	22s	2"/51mm	2	1705	80900	ea. 24561
50µL	RN	22s	2"/51mm	2	1705	80930	ea. 24562
100µL	N	22s	2"/51mm	2	1710	81000	ea. 24563
100µL	RN	22s	2"/51mm	2	1710	81030	ea. 24564
250µL	N	22s	2"/51mm	2	1725	81100	ea. 24567
250µL	RN	22s	2"/51mm	2	1725	81130	ea. 24568
500µL	LTN	22	2"/51mm	2	1750	81217	ea. 24571
500µL	RN	22	2"/51mm	2	1750	81230	ea. 24572
1mL	LTN	22	2"/51mm	2	1001	81317	ea. 24575
1mL	RN	22	2"/51mm	2	1001	81330	ea. 24576
1mL	TLL	*	—	w/out slots	1001	81320	ea. 24578
2.5mL	TLL	*	—	w/out slots	1002	81420	ea. 24584
2.5mL	RN	22	2"/51mm	2	1002	81430	ea. 24582
2.5mL	N	22	2"/51mm	2	1002	81417	ea. 24581
5mL	TLL	*	—	w/out slots	1005	81520	ea. 20178
10mL	TLL	*	—	w/out slots	1010	81620	ea. 20179
25mL	TLL	*	—	w/out slots	1025	82520	ea. 24591
50mL	TLL	*	—	w/out slots	1050	85020	ea. 24717

Guide to Needle Termination Codes**Hamilton:**

(N) Cemented Needle
 (RN) Removable Needle
 (ASN) Autosampler
 Cemented Needle
 (ASRN) Autosampler
 Removable Needle
 (TLL) Teflon® Luer Lock
 (KH) Knurled Hub
 (LT) Luer Tip
 (LTN) Luer Tip Cemented
 Needle

SGE:

(F) Fixed Needle
 (R) Removable Needle
 (LL) Luer Lock
 (LT) Luer Tip



SGE Gas-Tight Syringe

SGE Syringes

Volume	Needle Term.	Needle Gauge	Needle Length	Point Style	SGE		Restek
					Model	cat.#	
10µL	F	26	50mm	2	10F-GT	002200	ea. 24725
10µL	R	26	50mm	2	10R-GT	002250	ea. 24726
25µL	F	25	50mm	2	25F-GT	003200	ea. 24727
25µL	R	25	50mm	2	25R-GT	003250	ea. 24728
50µL	F	25	50mm	2	50F-GT	004200	ea. 24729
50µL	R	25	50mm	2	50R-GT	004250	ea. 24730
100µL	F	25	50mm	2	100F-GT	005200	ea. 24734
100µL	R	25	50mm	2	100R-GT	005250	ea. 24735
100µL	LL	*	—	—	100F-LL-GT	005230	ea. 24737
250µL	F	25	50mm	2	250F-GT	006200	ea. 24738
250µL	R	25	50mm	2	250R-GT	006250	ea. 24739
250µL	LL	*	—	—	250F-LL-GT	006230	ea. 24741
500µL	F	25	50mm	2	500F-GT	007200	ea. 24742
500µL	R	25	50mm	2	500R-GT	007250	ea. 24743
1mL	R	23	50mm	2	1MR-GT	008100	ea. 24750
1mL	LL	*	—	—	1MDF-LL-GT	008025	ea. 24752
2.5mL	LL	*	—	—	2.5MDF-LL-GT	008425	ea. 24755
5mL	LL	*	—	—	5MDR-LL-GT	008760	ea. 24757
10mL	LL	*	—	—	10MDR-LL-GT	008960	ea. 24759
25mL	LL	*	—	—	25MDR-LL-GT	009462	ea. 24760
50mL	LL	*	—	—	50MR-LL-GT	009660	ea. 24761
100mL	LL	*	—	—	100MR-LL-GT	009760	ea. 24762

*Needles sold separately. See page 36.

