

RESTEK GC COLUMNS

accept no substitutes

HROMalytic Chromatography
Products '08
Australian Distributors **ECH**nology
www.chromtech.net.au E-mail : info@chromtech.net.au Tel : +61 3 9762 2034 Fax : +61 3 9761 1169



- **Performance**

Choose Restek columns for complete confidence in your results

- **Quality**

Each Restek column is individually tested to meet demanding criteria and stringent specifications

- **Reproducibility**

Innovative manufacturing technology produces columns with the highest batch-to-batch reproducibility for consistent results in your analysis

- **Selection**

Restek offers more unique phases and configurations for all demanding applications, like pesticides, food, pharmaceuticals, and petroleum

featuring...

New Rxi™ GC Column Series

High Inertness + Low Bleed = Greatest Sensitivity

Best Reproducibility = Consistent Results



Turning Visions into Reality™

www.restek.com

Column Cross-References

Columns by Phase Composition

Restek	Phase Composition	Agilent/J&W	Supelco	Alltech
Rxi-1ms, Rtx-1, Rtx-1MS, Stx-1HT	100% dimethyl polysiloxane	HP-1, HP-101, HP-1MS, Ultra-1, DB-1, DB-1MS, DB-1ht, SE-30	Equity-1, SPB-1, SP-2100, SPB-1 Sulfur, SE-30, MDN-1	AT-1, SE-30, AT-1MS, EC-1
Rxi-5ms, Rtx-5, Rtx-5MS, XTI-5, Stx-5HT	95% dimethyl/ 5% diphenyl polysiloxane	HP-5, HP-5MS, PAS-5, DB-5, DB-5.625, DB-5ht, SE-54	Equity-5, SPB-5, PTE-5, SE-54, SAC-5, PTE-5 QTM, MDN-5	AT-5, SE-54, AT-5MS, EC-5
Rtx-5Sil MS	95% dimethyl/ 5% diphenyl polysilarylene	HP-5TA, DB-5ms	MDN-5S	—
Rtx-1301, Rtx-624	6% cyanopropylphenyl/ 94% dimethyl polysiloxane	HP-1301, HP-624, DB-1301, DB-624	SPB-1301	AT-624
Rtx-20	80% dimethyl/ 20% diphenyl polysiloxane	—	SPB-20, VOCOL	AT-20
Rtx-35, Rtx-35MS	65% dimethyl/ 35% diphenyl polysiloxane	HP-35, HP-35MS, DB-35	SPB-35, SPB-608, MDN-35	AT-35, AT-35MS, EC-35
Rtx-1701	14% cyanopropylphenyl/ 86% dimethyl polysiloxane	HP-1701, PAS-1701, DB-1701	SPB-1701	AT-1701
Rtx-200, Rtx-200MS	trifluoropropylmethyl polysiloxane	DB-210, DB-200	—	AT-210
Rtx-17	50% dimethyl/ 50% diphenyl polysiloxane	DB-17, DB-17HT, DB-608	—	—
Rtx-50	100% methylphenyl polysiloxane	HP-17, HP-50 +	SP-2250, SPB-50	AT-50, AT-50MS
Rtx-65, Rtx-65TG	35% dimethyl/ 65% diphenyl polysiloxane	—	—	—
Rtx-225	50% cyanopropylmethyl/ 50% phenylmethyl polysiloxane	HP-225, DB-225	—	AT-225
Stabilwax, Rtx-WAX	polyethylene glycol (PEG)	HP-20M, Inno Wax, DB-Wax, Carbowax 20M, HP-Wax, DB-Waxetr	Supelcowax-10, Carbowax PEG 20M	AT-Wax, Carbowax, AT-WAXMS
Stabilwax-DB	PEG for amines and basic compounds	CAM	Carbowax-Amine	—
Stabilwax-DA	PEG for acidic compounds	HP-FFAP, DB-FFAP, OV-351	Nukol, SP-1000	AT-1000, FFAP
Rtx-2330	90% biscyanopropyl/ 10% cyanopropylphenyl polysiloxane	—	SP-2330, SP-2331, SP-2380	AT-Silar
Rt-2560	biscyanopropyl polysiloxane	—	SP-2560	—
Rt-β DEXm	permethylated β cyclodextrin	Cyclodex-β	β-DEX	Chiraldex-β
Rt-TCEP	1,2,3-tris(cyanoethoxy)propane	—	TCEP	—
Rtx-440	restek exclusive	—	—	—
Sbx-500	phenyl polycarborane-siloxane	—	—	—
Rtx-XLB	proprietary phase	DB-XLB	—	—
Column Features				
Integra-Guard	built in guard column	DuraGuard	—	—
MXT	Silcosteel-treated stainless steel	ProSteel	Metallon	—

Columns by Application

Restek	Application	Agilent/J&W	Supelco	Alltech	SGE
Rtx-VMS, Rtx-VGC	Volatile organics analysis - EPA Methods 502.2, 524.2, 601, 602, 624, 8010, 8020, 8240, 8260	restek exclusive	—	—	—
Rtx-VRX, Rtx-502.2, Rtx-624, Rtx-Volatiles	Volatile organics analysis - EPA Methods 502.2, 524.2, 601, 602, 624, 8010, 8020, 8240, 8260	HP-624, HP-VOC, DB-624, DB-502.2, DB-VRX	VOCOL, SPB-624	AT-624	—
Rtx-CLPesticides, Rtx-CLPesticides2, Sbx-CLPesticides, Sbx-CLPesticides2	Organochlorine pesticides - EPA Methods 8081, 608, and CLP Pesticides	restek exclusive	—	—	—
Rtx-OPPesticides, Rtx-OPPesticides2	Organophosphorus pesticides - EPA Method 8141A	restek exclusive	—	—	—
Rtx-5, Rtx-35, Rtx-50, Rtx-1701	Organochlorine pesticides - EPA Methods 8081, 608, and CLP Pesticides	HP-5, PAS-5, DB-5, DB-35, DB-608, HP-608, PAS-1701, DB-1701, DB-17, HP-50, HP-35	SPB-5, SPB-608, SPB-1701	AT-5, AT-35, AT-50, AT-1701, AT-Pesticides	BP-5, BP-10, BP-608
Rtx-2887	ASTM Test Method D2887	DB-2887	Petrocol 2887, Petrocol EX2887	—	—
Rtx-1PONA	PONA Analysis	HP-PONA, DB-Petro	Petrocol DH	AT-Petro	BP1-PONA
MXT-500 Sim Dist	Simulated Distillation	—	—	—	HF5
Rtx-5 Amine	Amines and Basic Compounds	—	PTA-5	—	—
FAMEWAX	Fatty Acid Methyl Esters (FAMES)	—	Omegawax	—	—
Rtx-BAC1, Rtx-BAC2	Blood Alcohol Analysis	DB-ALC1, DB-ALC2	—	—	—
Rtx-G27	Residual Solvents in Pharmaceuticals	—	—	—	—
Rtx-G43	Residual Solvents in Pharmaceuticals	—	OVI-G43	—	—
Rt-CW20M F&F	Fragrances and flavors	HP-20M, Carbowax 20M	—	—	BP-20M
Rtx-TNT, Rtx-TNT2	Explosives	restek exclusive	—	—	—
Rtx-Dioxin, Rtx-Dioxin2	Dioxins and furans	restek exclusive	—	—	—
Rtx-PCB	PCB Congeners	restek exclusive	—	—	—

Macherey-Nagel	SGE	Varian/Chrompack	Phenomenex	Quadrex	PerkinElmer	USP Nomenclature
Optima 1 Optima-1ms	BP-1	VF-1MS, CP Sil 5 CB, CP Sil 5 CB MS, SolGel-1MS	ZB-1	007-1	Elite-1	G1, G2, G38
Optima 5 Optima-5ms	BP-5	VF-5MS, CP Sil 8 CB, CP Sil 8 CB MS	ZB-5	007-2	PE-2	G27, G36
—	BPX-5	VF-XMS	ZB-5MS	—	—	—
Optima 1301, Optima 624	BP-624	—	ZB-624	007-1301	—	G43
—	—	—	—	007-7	PE-7	G28, G32
—	BPX-35, BPX-608	VF-35MS	ZB-35	007-11	PE-11	G42
Optima 1701	BP-10	CP Sil 19 CB	ZB-1701	007-1701	PE-1701	G46
Optima 210	—	VF-200MS	—	007-210	—	G6
—	—	VF-17MS	—	—	—	—
Optima 17	BPX-50	CP Sil 24 CB	ZB-50	007-17	PE-17	G3
—	—	TAP-CB	—	400-65HT, 007-65HT	—	G17
Optima 225	BP-225	CP Sil 43 CB	—	007-225	PE-225	G7, G19
PermaBond CW 20M, Optima WAX	BP-20	CP Wax 52 CB	ZB-WAX	007-CW	PE-CW	G14, G15, G16, G20, G39
—	—	CP Wax 51	—	—	—	—
PermaBond FFAP, Optima FFAP	BP-21	CP Wax 58 CB	—	007-FFAP	PE-FFAP	G25, G35
—	BPX-70	CP Sil 84	—	007-23	—	G48
—	—	—	—	—	—	—
—	Cydex-β	CP-Cyclodextrin β	—	—	—	—
—	—	CP-TCEP	—	—	—	—
restek exclusive	—	—	—	—	—	—
—	HT-5	—	—	—	—	—
—	—	—	—	—	—	—
—	—	EZ-Guard	Guardian	—	—	—
—	AlumaClad	Ultimetal	—	Ultra-Alloy	—	—

Varian/Chrompack	Phenomenex	Quadrex	PerkinElmer	USP
restek exclusive	—	—	—	—

CP Sil 13 CB	OV-624	007-624, 007-502	PE-502	—
--------------	--------	------------------	--------	---

restek **exclusive**

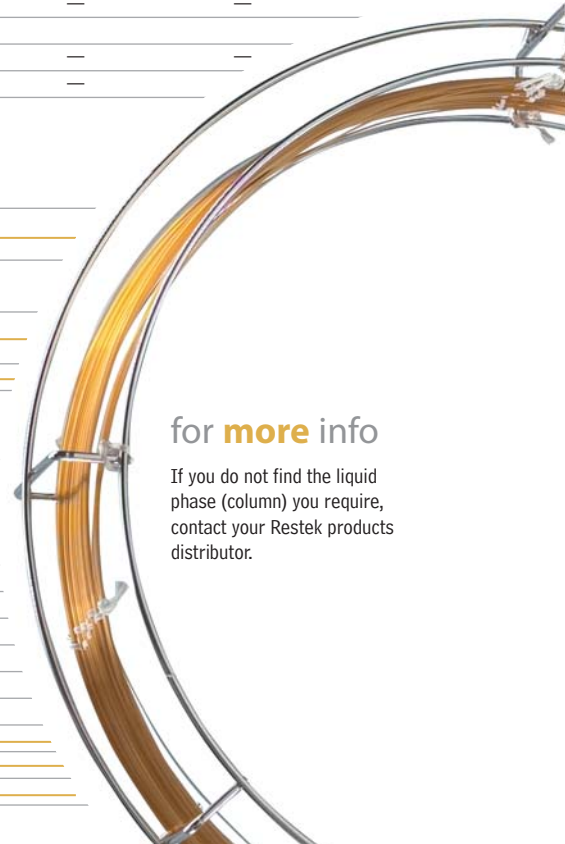
restek **exclusive**

CP Sil 8 CB, CP Sil 19 CB	ZB-5, ZB-35, ZB-1701, ZB-50	007-2, 007-608, 007-17, 007-1701	PE-2, PE-608, PE-1701	G3
CP-SimDist-CB	—	007-1-10V-1.0F	—	—
CP Sil PONA CB	—	007-1-10V-0.5F	—	—
—	—	—	—	—
—	—	—	—	G50
—	—	—	—	—
—	—	—	—	—
—	—	—	—	G27
—	—	—	—	G43
—	—	007-CW	—	—

restek **exclusive**

restek **exclusive**

restek **exclusive**



for **more info**

If you do not find the liquid phase (column) you require, contact your Restek products distributor.

New Rxi™ GC Column Series

The Ultimate High Performance Fused Silica Capillary Column

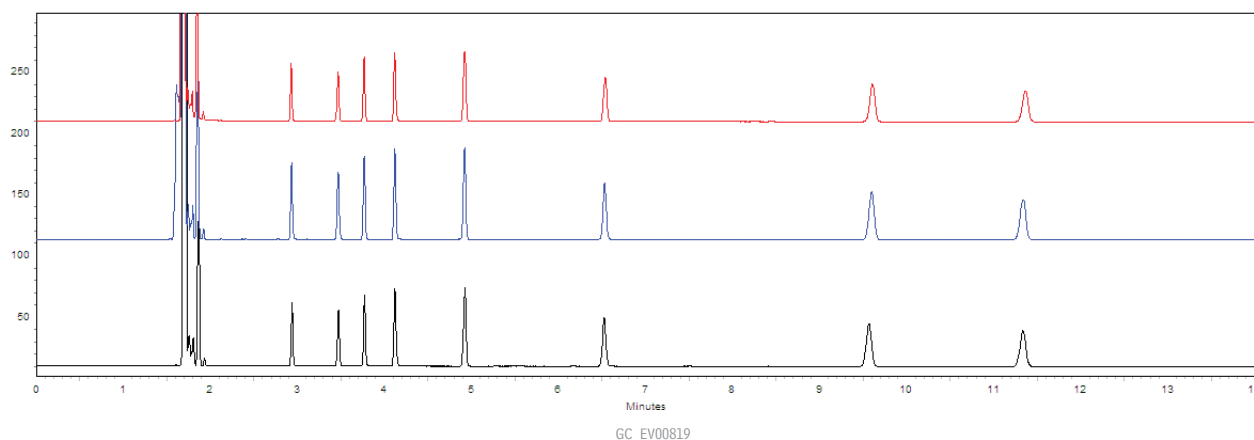
While GC analytical methods have continued to evolve, capillary column technology has been largely unchanged over the last several years. Using new techniques for deactivation, stationary phase synthesis, and coating, and tight controls over column manufacturing, Restek has set the benchmark for column performance by introducing the Rxi™ series.

- unsurpassed inertness
- ultra-low bleed
- guaranteed column to column reproducibility

restek **exclusive!**

Totally Reliable Column-to-Column Performance

Three manufacturing batches of Rxi™ columns show the excellent **reproducibility** assured by our manufacturing process.



Dozens of
Phases

x

Hundreds of
Configurations

=

Possibilities
without Limits

Lit. Cat.# 580043-INT
© 2006 Restek Corporation.



Trademarks:
For trademark attributions,
please see our catalog.

For technical literature and product information, please refer to the Restek website: www.restek.com or contact your Restek products distributor.