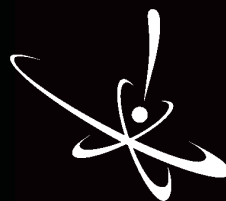




# Silcosteel®

Driving Innovation

High Performance  
Automotive Coatings



Restek  
Performance  
Coatings

**HR**Malytic Chromatography  
Australian Distributors **ECH**nology Products '08



www.chromtech.net.au E-mail : [info@chromtech.net.au](mailto:info@chromtech.net.au) Tel : +61 3 9762 2034 Fax : +61 3 9761 1169

# Driving Innovation

**Silcosteel®**—High Performance Automotive Coatings

- **Prevent heat discoloration** on stainless steel exhaust systems
- **Reduce carbon coking** on injectors, pistons, EGR valves and stainless steel exhaust systems
- **Improve corrosion resistance** of steel and stainless steel components
- **Customize** the look of stainless and chrome steel components.



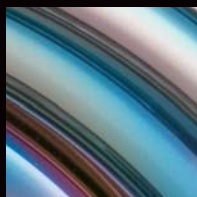
## Who We Are

Restek Performance Coatings specializes in innovative surface treatments for stainless steels, alloys, glass, and other materials. Our patented treatments create a durable coating that is beautiful and truly unique. Restek's surface treatments can be found in process systems, scientific instruments, spacecraft, submarines, and street machines worldwide.

**HRMalytic Chromatography**  
**Products '08**  
**Australian Distributors ECH nology**

www.chromtech.net.au E-mail : [info@chromtech.net.au](mailto:info@chromtech.net.au) Tel : +61 3 9762 2034 Fax : +61 3 9761 1169

**RESTEK**



## What is Silcosteel®?

Silcosteel® is a silicon layer applied to stainless steels and other metals. It is deposited using a patented process in which the item to be treated is heated under vacuum. Silicon gases react with the part to form the protective surface that grows and overlays itself multiple times. The reaction layer penetrates into the part and creates a solid non-line-of-sight coating that is integral to the part—even at corners, holes, and machined ridges. Silcosteel®'s rich, vibrant colors are created by the treatment's light refraction properties. The visible color depends on the treatment layer's thickness, making each piece truly unique!

## What's in it for me?

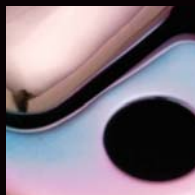
**Improved performance**—reduce the formation of power-robbing deposits.

**Protection**—Keep your custom ride looking new with corrosion-resistant Silcosteel®.

**Longer finish life**—No flaking means lasting beauty—no delamination with age or heat.

**No discoloration**—Avoid tired exhaust discoloration by treating components with Silcosteel®.

**Bragging rights!** Create a truly unique appearance—you'll never see another part exactly like yours.



## What's it cost?

Although each piece is treated individually, it's not as expensive as you may think. Pricing varies by size and quantity, so contact us for a quote.

## FREE sample!

Contact us at [www.restekcoatings.com/getsilco](http://www.restekcoatings.com/getsilco) or 800-356-1688, ext. 2307 for your free Silcosteel® treated stainless steel sample and distribution information.

# Silcosteel®

Driving Innovation

## FREE sample!

Contact us at

[www.restekcoatings.com/getsilco](http://www.restekcoatings.com/getsilco)

or 800-356-1688, ext. 2307 for

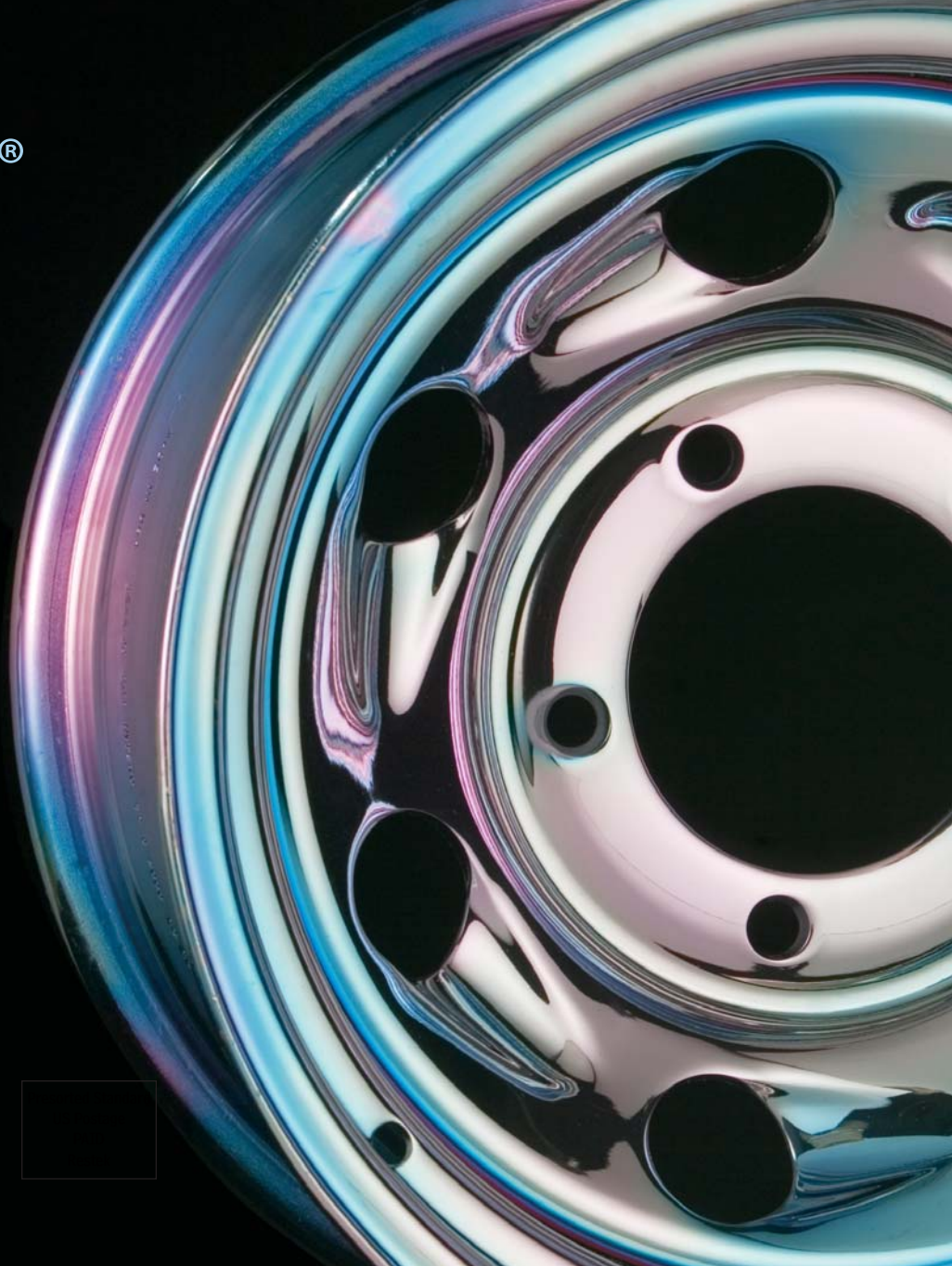
your free Silcosteel® treated

stainless steel sample and

distribution information.



Restek  
Performance  
Coatings



**HR**Malytic Chromatography  
Products '08  
Australian Distributors **ECH**nology

[www.chromtech.net.au](http://www.chromtech.net.au) E-mail : [info@chromtech.net.au](mailto:info@chromtech.net.au) Tel : +61 3 9762 2034 Fax : +61 3 9761 1169

**RESTEK**