

# FAST FACTS

At-a-Glance  
Product  
Information  
from Restek



**Ken Herwehe**  
Analytical Reference Materials  
Product Marketing Manager  
814-353-1300, ext. 2127



**Joe Moodler**  
Analytical Reference Materials  
Custom Standards Group Leader  
814-353-1300, ext. 2148

For *complete lists* of standards, columns and current prices, visit our website at:

[www.restekcorp.com](http://www.restekcorp.com)

## Certified PAHs in Composite Diesel Fuel #2

PAH	Typical Certified Conc. * (ppm)
acenaphthene	20
acenaphthylene	10
fluorene	30
1-methylnaphthalene	250
2-methylnaphthalene	170
naphthalene	80
phenanthrene	40

50,000µg/mL diesel fuel #2 in methylene chloride, 1mL/ampul

	cat.#/Each	5-pk.	10-pk.
	31673	31673-510	
w/data pack	31673-500	31673-520	31773

## Certified Aromatics in Composite Gasoline

Certified for:\*

benzene	MTBE	toluene
ethylbenzene	naphthalene	<i>m</i> -xylene
<i>m</i> -ethyltoluene	<i>n</i> -propylbenzene	<i>o</i> -xylene
<i>o</i> -ethyltoluene	1,2,3-trimethylbenzene	<i>p</i> -xylene
<i>p</i> -ethyltoluene	1,2,4-trimethylbenzene	
isopropylbenzene	1,3,5-trimethylbenzene	

5500µg/mL unleaded gasoline in P&T methanol, 1mL/ampul

	cat.#/Each	5-pk.	10-pk.
	30485	30485-510	
w/data pack	30485-500	30485-520	30585

## Certified BTEX in Composite Unleaded Gas

Certified for:\*

benzene	total xylenes	naphthalene
ethylbenzene	MTBE	toluene
isopropyl benzene		

5500µg/mL unleaded gasoline in P&T methanol, 1 mL/ampul

	cat.#/Each	5-pk.	10-pk.
	30237	30237-510	
w/data pack	30237-500	30237-520	30337

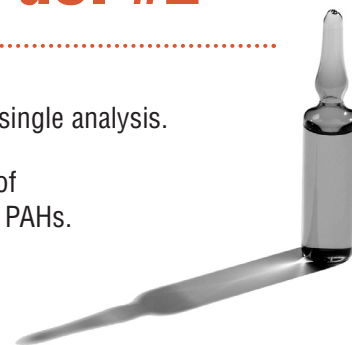
\* Concentrations differ from lot to lot. See Certificate of Analysis for certified concentrations.



# Certified PAHs in Composite Diesel Fuel #2

Lit. Cat. #59384B

- ✓ Confirm diesel #2 TPH and priority PAHs in a single analysis.
- ✓ Certificate of Analysis includes concentration of TPH and certified concentrations of individual PAHs.
- ✓ Complete data pack available.



There is great concern about environmental pollution caused by polynuclear aromatic hydrocarbons (PAHs) from diesel fuel: diesel internal combustion engines produce exhaust emissions that pollute the air; diesel fuel that leaks while in storage or spills during transportation will pollute soil and water systems. To address the latter issue, the US Environmental Protection Agency (EPA) Underground Storage Tank (UST) program has been enforcing the federal rules in monitoring and assessing diesel fuel contamination in soil and water systems. In addition, the American Society for Testing and Materials (ASTM International) has developed analytical methods and procedures for priority PAHs in fuels.

To help analytical laboratories accurately quantify and characterize PAHs in diesel fuel, Restek offers a reference material—Certified PAHs in Composite Diesel Fuel #2. Prepared from diesel #2 composite, this standard is suitable for checking both diesel #2 total petroleum hydrocarbons (TPH) and PAH calibrations in one analysis. After preparation and packaging, the concentration of each priority PAH compound is certified by GC/MS analysis. The complete data pack includes all gravimetric, QC, and calibration data.

## Also available: Certified Aromatics/BTEX in Unleaded Gasoline

- ✓ Confirm unleaded gasoline TPH, BTEX, and aromatics in a single analysis.
- ✓ Certificate of Analysis includes concentration of TPH and certified concentrations of BTEX and individual aromatics.
- ✓ Complete data pack available.

Certified BTEX in Composite Unleaded Gasoline and Certified Aromatics in Composite Gasoline are prepared from unleaded gasoline composites. After preparation and packaging, the concentration of each aromatic compound is certified by GC/MS analysis. The complete data pack includes all gravimetric, QC, and calibration data.

### Recommended Rtx®-5 Capillary GC Columns for Diesel #2 Analysis

**Catalog #:** 10238  
**Dimensions:** 30m x 0.25mm x 0.5µm

**Catalog #:** 10239  
**Dimensions:** 30m x 0.32mm x 0.5µm

**Catalog #:** 10270  
**Dimensions:** 30m x 0.53mm x 1.5µm

### Recommended Rtx®-1 Capillary GC Columns for Gasoline Analysis

**Catalog #:** 10156  
**Dimensions:** 60m x 0.25mm x 1.0µm

**Catalog #:** 10157  
**Dimensions:** 60m x 0.32mm x 1.0µm

**Catalog #:** 10173  
**Dimensions:** 60m x 0.53mm x 1.5µm

# FAST FACTS

At-a-Glance  
Product  
Information  
from Restek

online  
ordering  
available!

for U.S. customers only

- ✓ new products
- ✓ tech support
- ✓ online ordering
- ✓ literature archive
- ✓ chromatogram search wizard
- ✓ trade show presentations
- ✓ company information
- ✓ job opportunities
- ✓ seminar dates
- ✓ special promotions
- ✓ and much more!

[www.restekcorp.com](http://www.restekcorp.com)

## Custom Reference Materials Request Form

Take these **eight** steps to create the right solution:

1. Mixture Description: \_\_\_\_\_
2. Solvent: \_\_\_\_\_
3. Number of Components: \_\_\_\_\_
4. Volume per ampul (select): 1mL, 2mL, 5mL, 10mL or other \_\_\_\_\_ mL
5. Quantity of ampuls: \_\_\_\_\_
6. Testing and documentation that best meets your requirements:
  - Gravimetric Documentation: Lot Sheet with balance printout attached.
  - Qualitative Documentation: Certificate of Composition, Chromatogram, and Gravimetric Documentation.
  - Quantitative Documentation: Certificate of Analysis and Data Pack.

7. Compound(s): (list or attach sheet; include CAS number)

Compound 01: _____	Concentration: _____
Compound 02: _____	Concentration: _____
Compound 03: _____	Concentration: _____
Compound 04: _____	Concentration: _____
Compound 05: _____	Concentration: _____
Compound 06: _____	Concentration: _____
Compound 07: _____	Concentration: _____
Compound 08: _____	Concentration: _____
Compound 09: _____	Concentration: _____
Compound 10: _____	Concentration: _____
Compound 11: _____	Concentration: _____
Compound 12: _____	Concentration: _____
Compound 13: _____	Concentration: _____
Compound 14: _____	Concentration: _____
Compound 15: _____	Concentration: _____
Compound 16: _____	Concentration: _____
Compound 17: _____	Concentration: _____
Compound 18: _____	Concentration: _____
Compound 19: _____	Concentration: _____
Compound 20: _____	Concentration: _____

8. Concentration Units

mg/mL     µg/mL     ng/mL     vol./wt. %     wt./wt. %     other

Contact Information:

Name: \_\_\_\_\_

Date: \_\_\_\_\_

Company/Location: \_\_\_\_\_

Phone #: \_\_\_\_\_ FAX #: \_\_\_\_\_

E-mail: \_\_\_\_\_

**Domestic Customers**

FAX#: (814) 355-2895

email: [standards@restekcorp.com](mailto:standards@restekcorp.com)

**International Customers**

Contact Your Local

Restek Representative.

Order custom reference materials quickly and easily online at [www.restekcorp.com](http://www.restekcorp.com)

ALL mixtures are produced in accordance with our ISO 9001 registration.  
Analytical balances are calibrated daily at seven mass levels using NIST traceable weights.  
ALL raw materials used are a minimum of 97% pure unless otherwise specified.

Lit. Cat. #59384B

**CHROM**alytic +61(0)3 9762 2034  
ECHnology Pty Ltd

Australian Distributors  
Importers & Manufacturers  
[www.chromtech.net.au](http://www.chromtech.net.au)

Website NEW : [www.chromalytic.com.au](http://www.chromalytic.com.au) E-mail : [info@chromtech.net.au](mailto:info@chromtech.net.au) Tel: 03 9762 2034 . . . in AUSTRALIA