

Cool Tools!

for GC and HPLC

Restek Innovation Saves
You Time and Money

Ceramic Scoring Wafers

- Four straight scoring edges for cutting fused silica tubing and four serrated edges for cutting MXT[®] metal capillary columns.
- Sure-grip handle included.



**Make clean,
square cuts**



Hold the scoring wafer at a 45° angle to the tubing. Use gentle pressure and a smooth, perpendicular stroke.



Check the cut against the white of the scoring wafer. Look for a clean, square cut.

Description	qty.	cat.#
Ceramic Scoring Wafers	5-pk.	20116

Scoring Wafer with Handle

- Unique, ergonomic handle is made of soft, comfortable rubber.
- Ceramic wafer is serrated on one side and straight-edged on the other to cut both fused silica and metal tubing cleanly.

**Great scoring,
comfortable
grip**



Hold tubing firmly in one hand, allowing about two inches to extend freely. Hold the scoring wafer at a 45° angle to the tubing. Exert slight pressure—just



The tubing should fall off on its own, or it should easily break at the score with a slight tap of the wafer. Check the cut against the white of the scoring wafer. Look for a clean, square cut.

enough to put a slight arc in the tubing. Pull perpendicularly across the tubing.

Description	qty.	cat.#
Scoring Wafer with Handle	2-pk.	23015

Sapphire Scribe

- Cuts fused silica tubing.
- Produces a clean, square cut.

**Clips in shirt or lab coat
pocket**



One quick stroke...



...and tap leaves a clean, square end.

Description	qty.	cat.#
Sapphire Scribe	ea.	20182

Septum Puller



- Keep several on hand in your laboratory—can be used in many different ways.
- Use hooked end for removing septa and O-rings; pointed end works well for removing stuck ferrule fragments.



Dislodge a stuck ferrule quickly and easily—with-out scoring the fitting.



Remove septa without damaging an expensive weldment.

Description	qty.	cat.#
Septum Puller	ea.	20117

Inlet Liner Removal Tool

- Easily remove liner from injector.
- Made from high-temperature silicone.
- Won't chip or crack the liner.

**No more
burned
fingers!**



Gently push the liner removal tool onto the liner in the injection port, with a slight circular motion.



Slowly pull the liner out of the injection port in a straight vertical motion.



Use the liner removal tool to place a new liner into the injection port, avoiding hot metal surfaces.

Description	qty.	cat.#
Inlet Liner Removal Tool	3-pk.	20181

Mini Wool Puller/Inserter

Insert and remove wool plugs easily.* Order a spare pack so you'll always have one available.



Place a 1cm plug of loosely bound wool in the liner. Adjust its position with the puller/inserter tool.



Use the hooked end to retrieve a wool plug.

Description	qty.	cat.#
Mini Wool Puller/Inserter	2-pk.	20114

*Not recommended for use with double gooseneck liners.



Australian Distributors
Importers & Manufacturers
www.chromtech.net.au

Website NEW : www.chromalytic.com.au E-mail : info@chromtech.net.au Tel: 03 9762 2034 . . . in AUSTRALIA

Inlet Liner Packing Tool



Eliminate user variation!

- Position wool reproducibly every time.
- Accurate placement to a specific, measured depth, up to 100mm.

Recommended for inlet liners with an ID ≥ 2 mm.



Loosen the nut on the side of the tool and adjust the gauge to the manufacturer's recommended depth.



Place a one-centimeter plug of loosely bound wool at the top of the inlet liner.



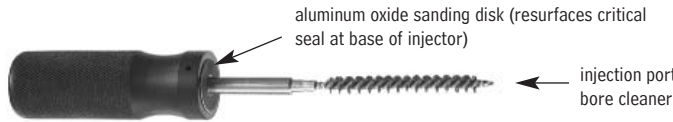
Insert the liner packing tool into the liner until the tool bottoms out. Remove the tool. The wool is now positioned correctly in the liner and the liner is ready for use.

Description	qty.	cat.#
Inlet Liner Packing Tool	ea.	20339

Injection Port Repair Tool

- Resurfaces critical inlet seal areas.
- For Agilent split/splitless injection ports.

Remove contaminants, achieve a better seal!



The critical seal at the base of a split/splitless injector allows a seal to form between the injection port and the inlet liner. This critical seal wears over time and may become scratched or pitted, which compromises the sealing ability of the injector. Use the Restek injection port repair tool to easily resurface the inlet seal and remove contaminants; it saves time and money by preventing leaks.

Description	qty.	cat.#
Injection Port Repair Tool	ea.	21393
Replacement Sanding Disks (5 fine & 5 medium)	10-pk.	22689

GC Accessories Organizer for Agilent 5890/6890 and Varian GCs

- Ideal for keeping GC accessories and supplies organized and easy to find.
- Built-in syringe and vial holders.
- Mounts on the GC for easy access.
- Includes all mounting hardware.



GC accessories and supplies not included.

Description	qty.	cat.#
GC Accessories Organizer for Agilent 5890/6890 and Varian GCs	ea.	22681

Injector Wrench for Agilent 5890/6890/6850 GCs

- Use to remove the septum nut and weldments during GC maintenance.
- High-quality stainless steel construction.
- Meets original equipment performance.



Use the smaller end to remove the septum nut.



Use the larger end to tighten the split/splitless weldment nut.

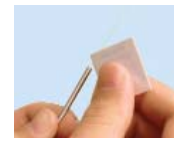
Description	Similar to Agilent part #	qty.	cat.#
Injector Wrench for Agilent 5890/6890/6850 GCs	19251-00100	ea.	22065

Capillary Installation Gauge for Agilent 5973 MS

- Pre-seats ferrule onto column for consistent installations.
- Made from high-quality stainless steel.



Install the nut and ferrule onto the column, then insert the column through the installation tool, exposing several centimeters at the exit end. Tighten the nut.



Score and remove the exposed end of the column, then loosen the nut.



The ferrule will be properly seated and should remain in place when light force is applied. Install the column into the GC/MS interface.

Description	Similar to Agilent part #	qty.	cat.#
Capillary Installation Gauge for Agilent 5973 MS	G1099-20039	ea.	21894

Easily pre-seat ferrules for consistent installations!

Capillary Installation Gauge

- Pre-seats graphite* ferrule onto column for consistent installations.
- Prevents crushed column ends.
- Made from high-quality stainless steel.



Install the column nut and ferrule onto the capillary column. Cut the column end squarely. Slide the column into the installation gauge to the recommended insertion distance. Finger-tighten the column nut.



Tighten the assembly with moderate force to ensure a properly seated ferrule. Loosen the assembly and remove the column and column nut with seated ferrule.



The ferrule will be properly seated in the column nut, and should remain in place when light force is applied. If it slides loosely on the column, repeat procedure.

Description	qty.	cat.#
Capillary Installation Gauge for Agilent-style fittings (compact ferrules)	ea.	21034
Capillary Installation Gauge for 1/16" fittings (1/16" ferrules)	ea.	21399

*Recommended for use with graphite ferrules.



Rethreading Tool

- Repair worn or damaged threads.
- Multiple uses (fittings, injectors, detectors, etc.)
- Built-in guide to prevent cross-threading.



Due to constant installation, removal, and exposure to extreme temperature changes, threads on GC parts become worn and damaged. This can cause a poor seal, and oxygen can enter the system, compromising analytical results and possibly destroying expensive analytical columns.



Screw the rethreading tool completely onto the injection port in a clockwise direction. Depending on the severity of thread damage, this may require some force.

Description	qty.	cat.#
Rethreading Tool for 1/16" compression fitting	ea.	23016
Rethreading Tool for 1/8" compression fitting	ea.	23017
Rethreading Tool for 1/4" compression fitting (Agilent split/splitless injection ports)	ea.	23018
Rethreading Tool for 7/16" compression fitting (Varian injection ports)	ea.	23019
Rethreading Tool for 1/4" Varian-style capillary column fittings	ea.	21893

MLE Capillary Tool Kit

Make life easier! The MLE Tool Kit conveniently provides tools necessary for installing and maintaining capillary columns.

The MLE Tool Kit includes:

- Rubber-tipped slide-lock tweezers.
- 15cm compact steel ruler.
- Three ceramic scoring wafers with handles.
- Pocket magnifier.
- Four-inch tapered needle file.
- Six stainless steel jet reamers (0.25–0.65mm OD).
- Septum puller.
- Three nylon brushes (1/8", 3/16", and 1/4-inch OD).
- Pipe cleaner (one-foot length).
- 1/4" x 3/16-inch wrench.
- 3/8" x 7/16-inch, 7/16" x 1/2-inch, and 1/2" x 3/16-inch wrench.
- One-meter length of high-temperature string (400°C).
- Stainless steel surface brush.
- Mini wool puller/insertor tool.
- Inlet liner removal tool.
- Three stainless steel tube brushes (3/16", 1/4", and 3/8-inch OD).
- 25-pack cotton swabs.
- Flashlight.
- Column installation gauge for Agilent-style nuts.
- Mini hand drill set.



Description	qty.	cat.#
MLE Capillary Tool Kit	kit	20180

Free Literature!



Chromatography Columns and Supplies Catalog
(lit. cat.# 59854)
Designed by chromatographers, for chromatographers.

The 2004 Restek catalog features unique new GC and HPLC columns, problem-solving chromatography tools and accessories, high-value instrument parts, sample collection and sample preparation products, many new reference chemical mixes, proprietary surface treatments for sample pathways, new chromatograms, and more.

Inlet and FID Maintenance Kits for Agilent GCs

- Include the most common consumable supplies.
- All parts meet or exceed performance of instrument manufacturer's parts.
- Parts list makes reordering easy.

The Inlet Maintenance Kit includes these tools and many others.



Dislodge ferrules or remove silica deposits with the Jet Reamer/Ferrule Remover.



The Capillary Installation Gauge makes seating the ferrule and installing the column consistent and easy.



The Inlet Liner Removal Tool safely removes an inlet liner from a hot injection port without cracking the liner.



Inlet kit includes:

- 0.4, 0.5, and 0.8mm ID graphite ferrules.
- Viton® O-rings.
- Capillary nuts.
- Inlet seals.
- Reducing nut.
- Scoring wafer.
- 11mm Thermolite® septa.
- 4.0mm single gooseneck liner.
- 4.0mm split liner with wool.
- Capillary column caps.
- 1/4" x 3/16-inch wrench.
- Septum puller.
- Installation gauge.
- Wire cleaning brush.
- Jet reamers/ferrule removers.
- Inlet liner removal tool.

The FID Maintenance Kit includes these tools and many others.



FID maintenance made easy with tools and replacement components specifically matched to your instrument.



The FID ignitor meets original equipment specifications.



The high-performance Siltek™ FID jet will stay clean longer—even when exposed to highly active compounds.



FID kits include:

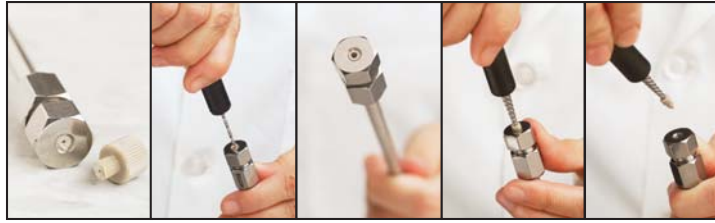
- 1/4-inch, 0.4, 0.5, and 0.8mm ID graphite ferrules.
- FID/NPD capillary adaptor.
- Capillary nuts.
- Jet reamers/ferrule removers.
- 1/4-inch nut.
- Scoring wafer.
- Capillary column caps.
- Ignitor for Agilent 5890 or 6890/6850 GCs.
- FID flow measuring adaptor.
- 1/4" x 3/16-inch wrench.
- Installation gauge.
- Wire cleaning brush.
- High-performance Siltek™-treated FID jet for Agilent 5890 or 6890/6850 GCs.
- 1/4-inch nut driver for jet removal.

Description	qty.	cat.#
Inlet Maintenance Kit for Agilent 5890/6890/6850 GCs	kit	21069
FID Maintenance Kit for Agilent 5890 GCs	kit	21070
FID Maintenance Kit for Agilent 6890/6850 GCs	kit	21071



PEEK® Fitting Extractor

Drill into the broken fitting, then screw the extractor into the fitting and remove it easily.



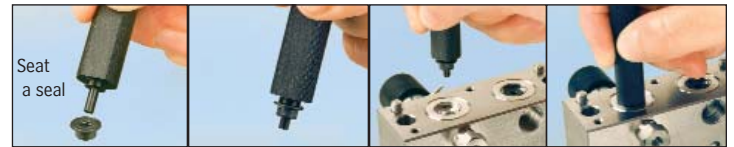
Description	qty.	cat.#
PEEK® Fitting Extractor	ea.	25325

HPLC Piston Seal Insertion Tool

- Simplify pump maintenance.
- One end removes old piston seal, other end easily and securely installs new seal.



Do you have to search for a paper clip or screw to remove worn seals from your HPLC pump? Then, once you get the old seal out, do you struggle to correctly seat the new seal? Now Restek has a tool that can help. Use one end to remove your old seal, then simply slip your new seal on the other end and push it flush into position. The tool cannot mar the surrounding metal surface of the pump housing.



Description	qty.	cat.#
HPLC Piston Seal Insertion Tool	ea.	21356

Visit www.restekcorp.com for a complete listing of HPLC replacement parts for Agilent, Waters, Perkin Elmer, Shimadzu, Hitachi, and Beckman systems.

Free Literature!



HPLC Columns and Accessories

(lit. cat. # 59241A)

In addition to general-purpose and special-purpose HPLC columns and guard columns, this 114-page catalog contains instrument parts, innovative tools, and other accessories, and many example chromatograms from analyses on Restek columns. Columns are prepared from four distinct lines of silica with characteristics tailored to meet specific analytical requirements.



Lit. Cat. # 59879-INT

©2004 Restek Corp.