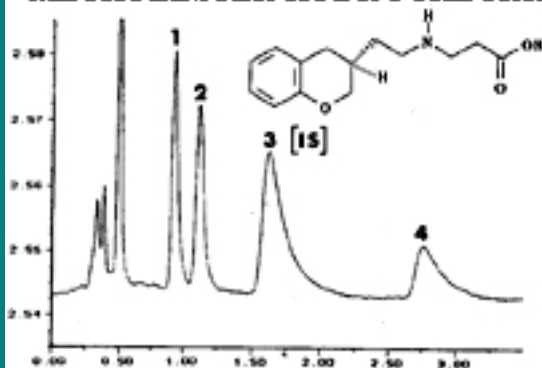




b-ALANIN-N-[2-(3,4-DIHYDRO-2H-1-BENZOPYRAN-3-YL)-ETHYL] METHYLESTER HYDROCHLORIDE



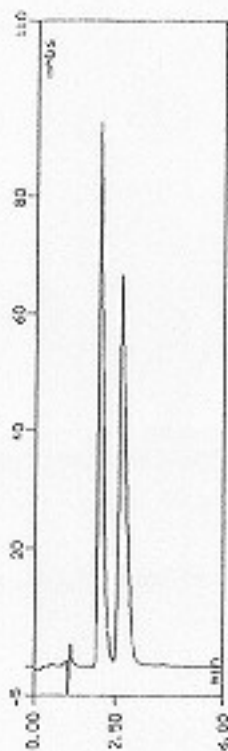
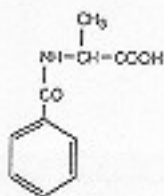
Column: CHIRAL-AGP 150x4.0 mm
+ guard column 10 x 3.0 mm

Mobile phase: phosph. buffer, pH 7.0
2.5 mM TBA

1. (-)-beta-alanin-N-[2-(3,4-dihydro-2H-1-benzopyran-3-yl)-ethyl] carboxylic acid
2. (+)-beta-alanin-N-[2-(3,4-dihydro-2H-1-benzopyran-3-yl)-ethyl] carboxylic acid
3. (-)-beta-alanin-N-[2-(3,4-dihydro-2H-1-benzopyran-3-yl)-ethyl] methylester



N-BENZOYL-DL-ALANINE



Column:
CHIRAL-AGP
100 x 4.0 mm

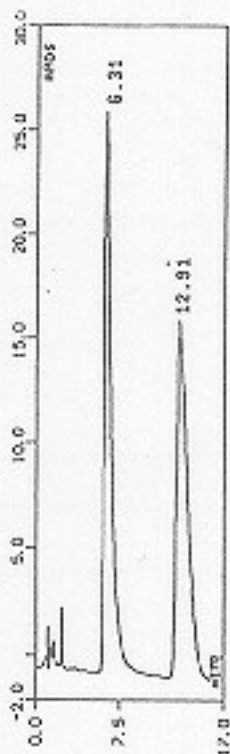
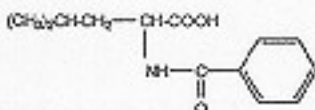
Mobile phase:
10 mM sod.ph.b.
pH 5.5

Detection:
UV 210 nm

Sample conc.:
0.1 mg/ml



N-BENZOYL-DL-LEUCINE



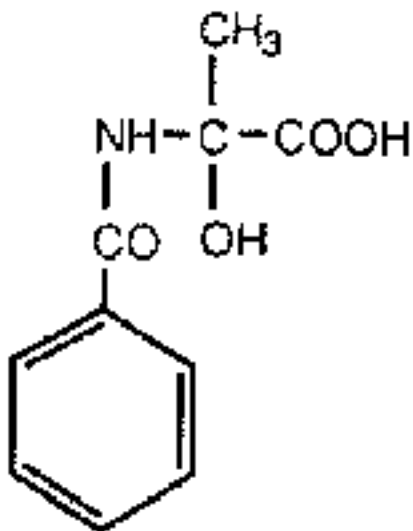
Column:
CHIRAL-HSA
100 x 4.0 mm

Mobile phase:
10% 2-propanol
in 100 mM sod.ph.b.
pH 7.0

Detection:
UV 225 nm

Sample conc.:
0.02 mg/ml

N-benzoyl-2-methylserine



Sample: 0.02 mg/ml N-benzoyl-2-methylserine in mobile phase

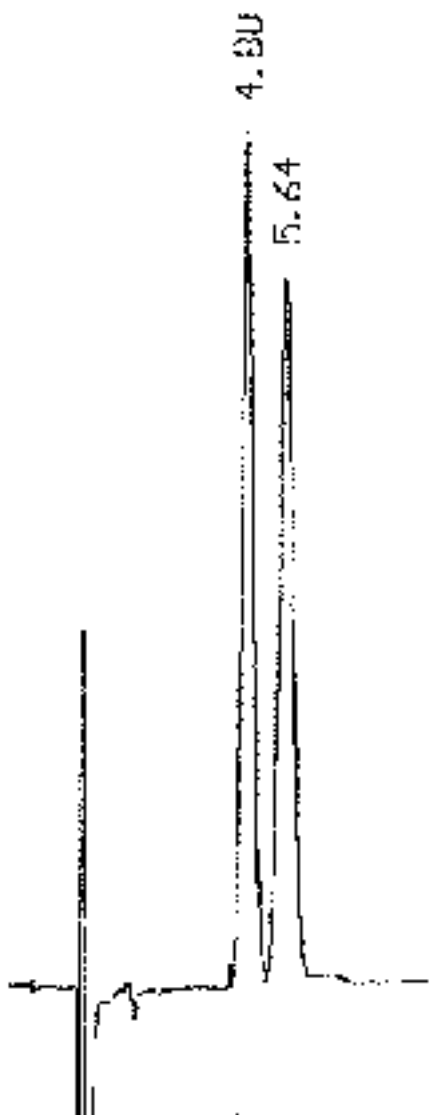
Column: CHIRAL-AGP 100x4.0 mm + CHIRAL-AGP 10x4.0 mm

Mobile phase: 20 mM ammonium acetate buffer pH 4.1

Flow rate: 0.80 ml/min

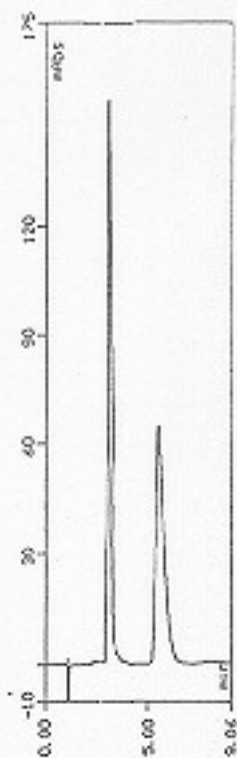
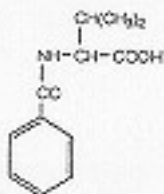
Detection: 225 nm

Inj. volume: 20 μ L





N-BENZOYL-DL-VALINE



Column:
CHIRAL-AGP
100 x 4.0 mm

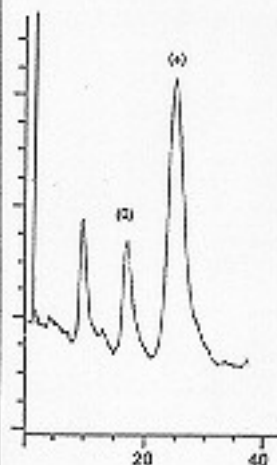
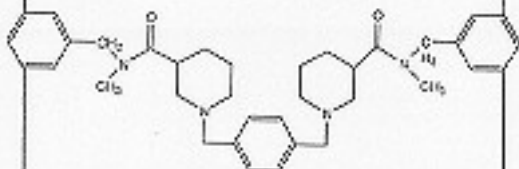
Mobile phase:
3% 2-propanol in
10 mM sod.ph.b.
pH 5.0

Detection:
UV 200 nm

Sample conc.:
0.1 mg/ml



α,α' -bis[3-(N-BENZYL-N-METHYL-CARBAMOYL)-PIPERIDINO]-p-XYLENE DIHYDROBROMIDE
(Reference no.82)



Column:
CHIRAL-AGP
100 x 4.0 mm

Mobile phase:
10% ethanol in
0.025 M sod.ph.b.
pH 7.0 + 0.025 M
TBA.HSO₄

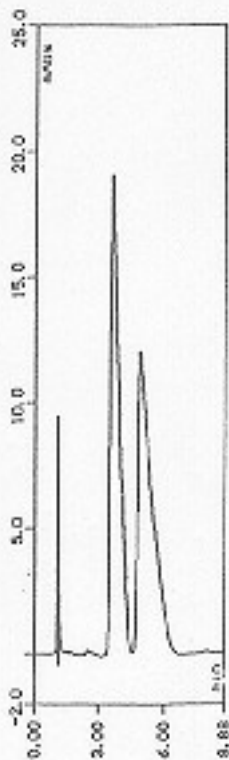
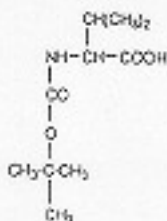
Flow:
0.9 ml/min

Detection:
UV 220 nm

Reference [A82](#), a,a'-bis[3-(N-benzyl-N-methyl-carbamoyl)-piperidion]-p-xylene dihydrobromide



N-t-BOC-DL-VALINE



Column:
CHIRAL-AGP
100 x 4.0 mm

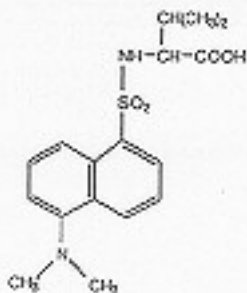
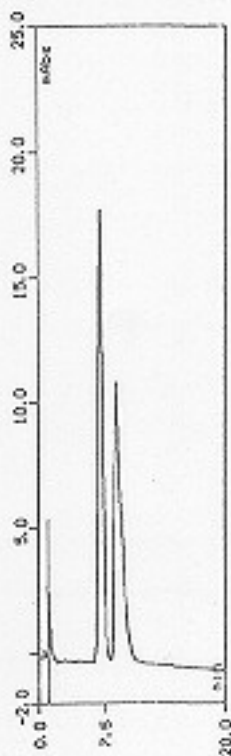
Mobile phase:
3% acetonitrile
in 10 mM sod.ph.b.
pH 5.0

Detection:
UV 200 nm

Sample conc.:
0.2 mg/ml



DANSYL-DL-VALINE



Column:
CHIRAL-AGP
100 x 4.0 mm

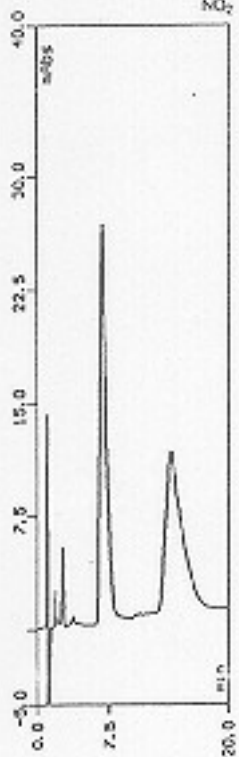
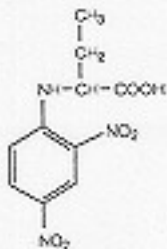
Mobile phase:
5% 2-propanol in
10 mM sod.ph.b.
pH 5.0

Detection:
UV 200 nm

Sample conc.:
0.1 mg/ml



N-2,4-DNP-DL- α -AMINO-n-BUTYRIC ACID



Column:
CHIRAL-HSA
100 x 4.0 mm

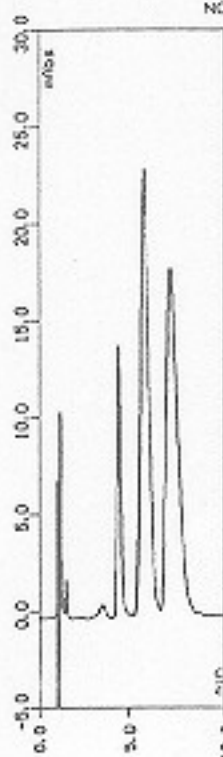
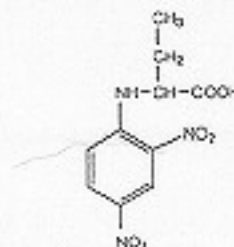
Mobile phase:
15% 1-propanol in
10 mM sod.ph.b.
pH 7.0

Detection:
UV 210 nm

Sample conc.:
0.1 mg/ml

Product
Information;
[CHIRAL-
HSA.](#)

N-2,4-DNP-DL- α -AMINO-n-BUTYRIC ACID



Column:
CHIRAL-AGP
100 x 4.0 mm

Mobile phase:
100 mM sod.ph.b.
pH 6.0

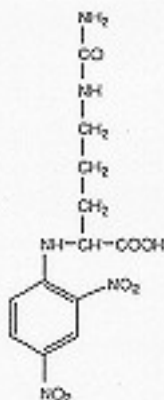
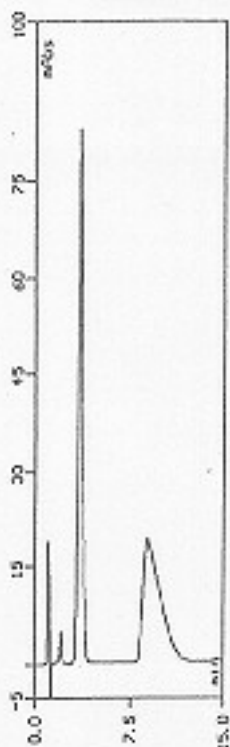
Detection:
UV 210 nm

Sample conc.:
0.1 mg/ml

Product
Information;
[CHIRAL-
AGP.](#)



N-2,4-DNP-DL-CITRULLINE



Column: CHIRAL-HSA 100 x 4.0 mm

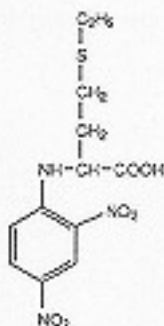
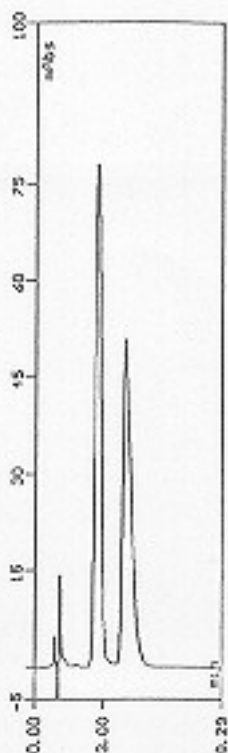
Mobile phase: 15% 2-propanol in 10 mM
sod.ph.b. pH 7.0

Detection: UV 210 nm

Sample conc.: 0.1 mg/ml



N-2,4-DNP-DL-ETHIONINE



Column: CHIRAL-AGP 100 x 4.0 mm

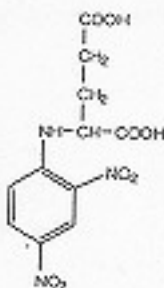
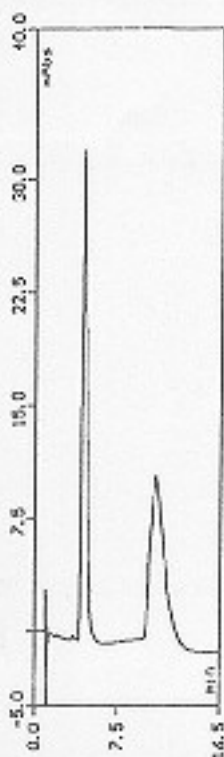
Mobile phase: 1% 2-propanol in 10 mM
sod.ph.b. pH 7.0

Detection: UV 210 nm

Sample conc.: 0.1 mg/ml



N-2,4-DNP-DL-GLUTAMIC ACID



Column: CHIRAL-HSA 100 x 4.0 mm

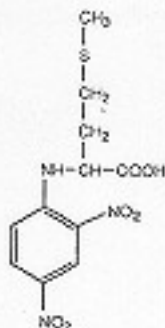
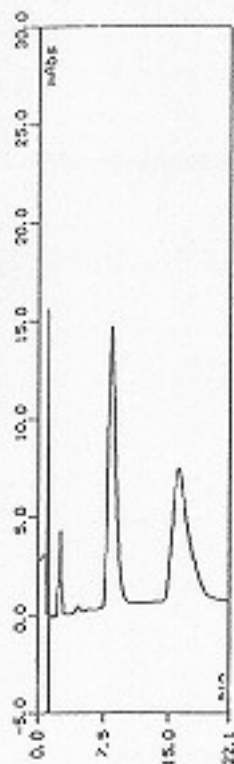
Mobile phase: 10% 2-propanol in 100 mM
sod.ph.b. pH 7.0

Detection: UV 225 nm

Sample conc.: 0.1 mg/ml



N-2,4-DNP-DL-METHIONINE



Product Information;
[CHIRAL-HSA.](#)

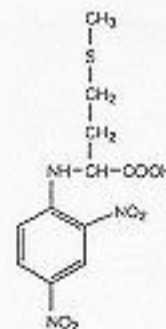
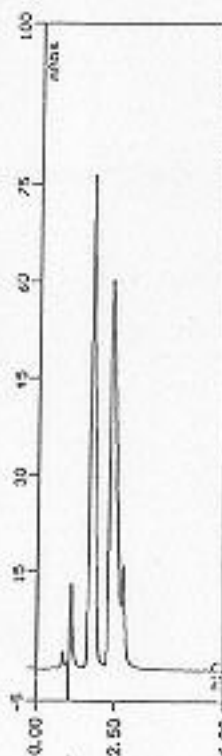
Column: CHIRAL-HSA 100 x 4.0 mm

Mobile phase: 15% 1-propanol in 10 mM
sod.ph.b. pH 7.0

Detection: UV 210 nm

Sample conc.: 0.1 mg/ml

N-2,4-DNP-DL-METHIONINE



Product Information;
[CHIRAL-AGP.](#)

Column: CHIRAL-AGP 100 x 4.0 mm

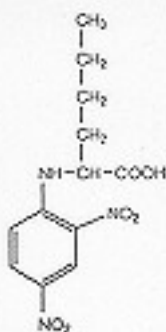
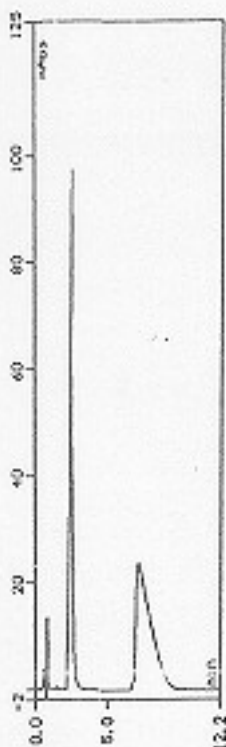
Mobile phase: 1% 2-propanol in 10 mM
sod.ph.b. pH 7.0

Detection: UV 210 nm

Sample conc.: 0.1 mg/ml



N-2,4-DNP-DL-NORLEUCINE



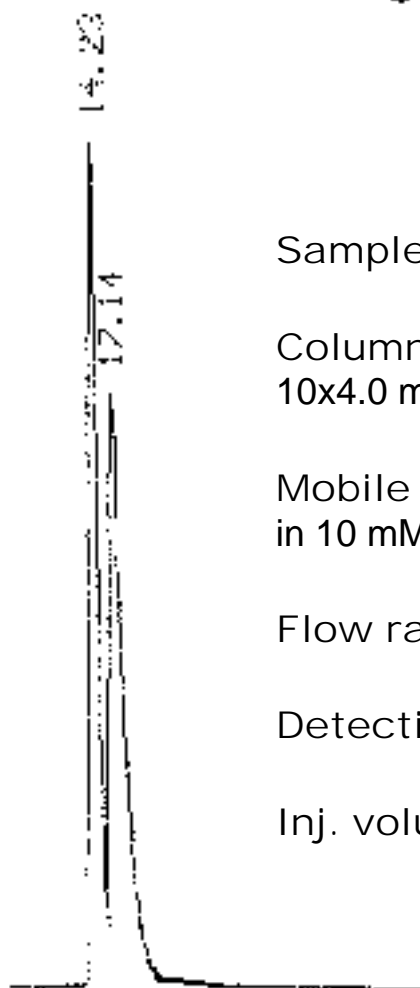
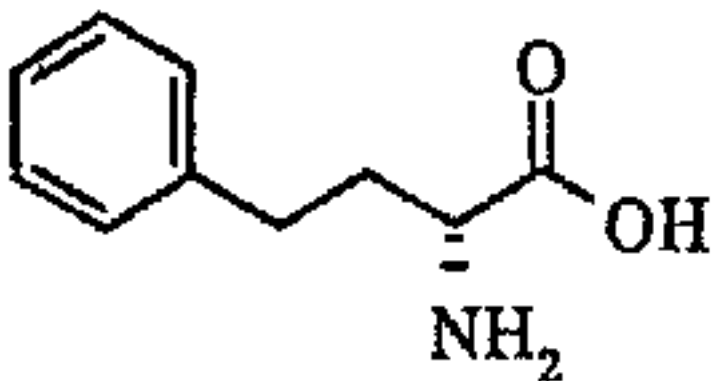
Column: CHIRAL-AGP 100 x 4.0 mm

Mobile phase: 1% 2-propanol in 10 mM
sod.ph.b. pH 7.0

Detection: UV 210 nm

Sample conc.: 0.1 mg/ml

Homophenylalanine



Sample: Homophenylalanine in mobile phase

Column: CHIRAL-AGP 100x4.0 mm + CHIRAL-AGP 10x4.0 mm

Mobile phase: 2% acetonitrile + 2 mM octanoic acid in 10 mM sodium phosphate buffer pH 5.0

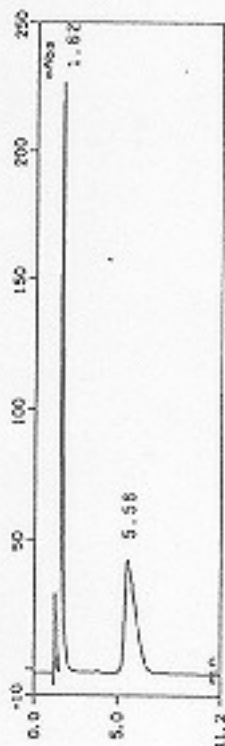
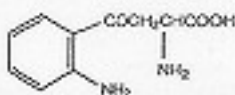
Flow rate: 0.80 ml/min

Detection: 215 nm

Inj. volume: 20 μ L



KYNURENINE



Column:
CHIRAL-HSA
100 x 4.0 mm

Mobile phase:
10 mM sod.ph.b.
pH 6.0

Detection:
UV 225 nm

Sample conc.:
0.02 mg/ml



TCP-D,L-methionine

Sample: TCP-D,L-methionine in mobile phase

Column: CHIRAL-AGP 100x4.0 mm + CHIRAL-AGP 10x4.0 mm

Mobile phase: 3% 2-propanol in 10 mM phosphate buffer pH 6.0

Flow rate: 0.90 ml/min

Detection: 210 nm

Inj. volume: 20 μ L

