



# Forensics Anesthetics



www.dps-instruments.com

Government agencies generally recommend that no worker should be exposed to concentrations greater than 2ppm of any halogenated anesthetic agent over a period of time. There are no documented adverse effects of chronic exposure to Waste Anesthetic Gases (WAG's) in the workplace. Although results of some studies suggest a link between exposures to halogenated anesthetics and increased health problems. Precautions include adequate ventilation in the operating room, a scavenging system, and work practices to minimize leaks. The DPS Anesthetics GC Systems are designed with safety in mind to check the purity of the concentrated anesthetic, monitor workplace concentrations, or analyze sample concentrations during anesthesia. The latest designed high resolution column and the sensitive FID detector does the hard work for you. We have added a built-in Headspace Concentrator for your convenience. The Series 600 GC is for analyses in the lab, or use the Portable Companion 1 GC Systems for analyses right where the samples are taken. The fast heating and rapid cooling column oven in every DPS GC vastly increases your sample throughput. The fully integrated Anesthetic GC Analyzer Systems are small and lightweight and all DPS systems are modular for expandability, upgrades, and easy service.



Series 600 GC

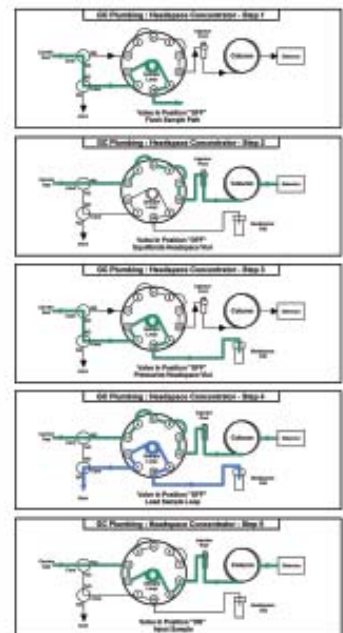
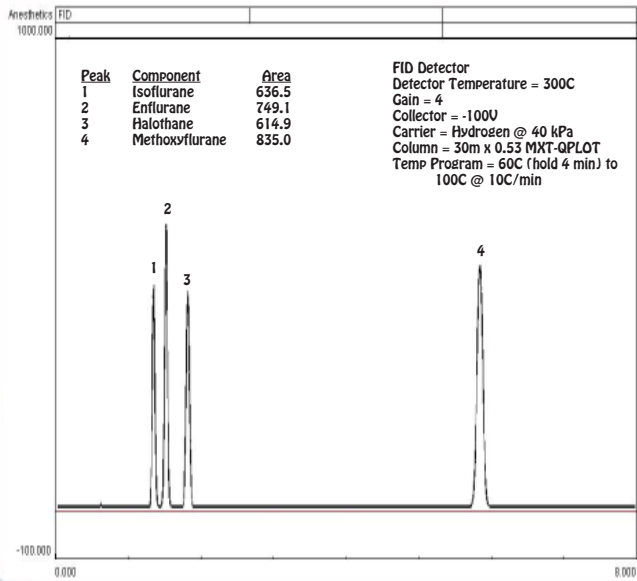
### Available Configurations Include:

- 600-C-060 - Series 600 Anesthetics GC Analyzer (FID, Headspace, 30m)
- 500-C-060 - Companion 1 Portable Anesthetics GC Analyzer (FID, Headspace, 30m)



Companion 1 Portable GC  
(with Headspace Concentrator)

### Anesthetics - Headspace



11/2015 Specifications may change without notice.