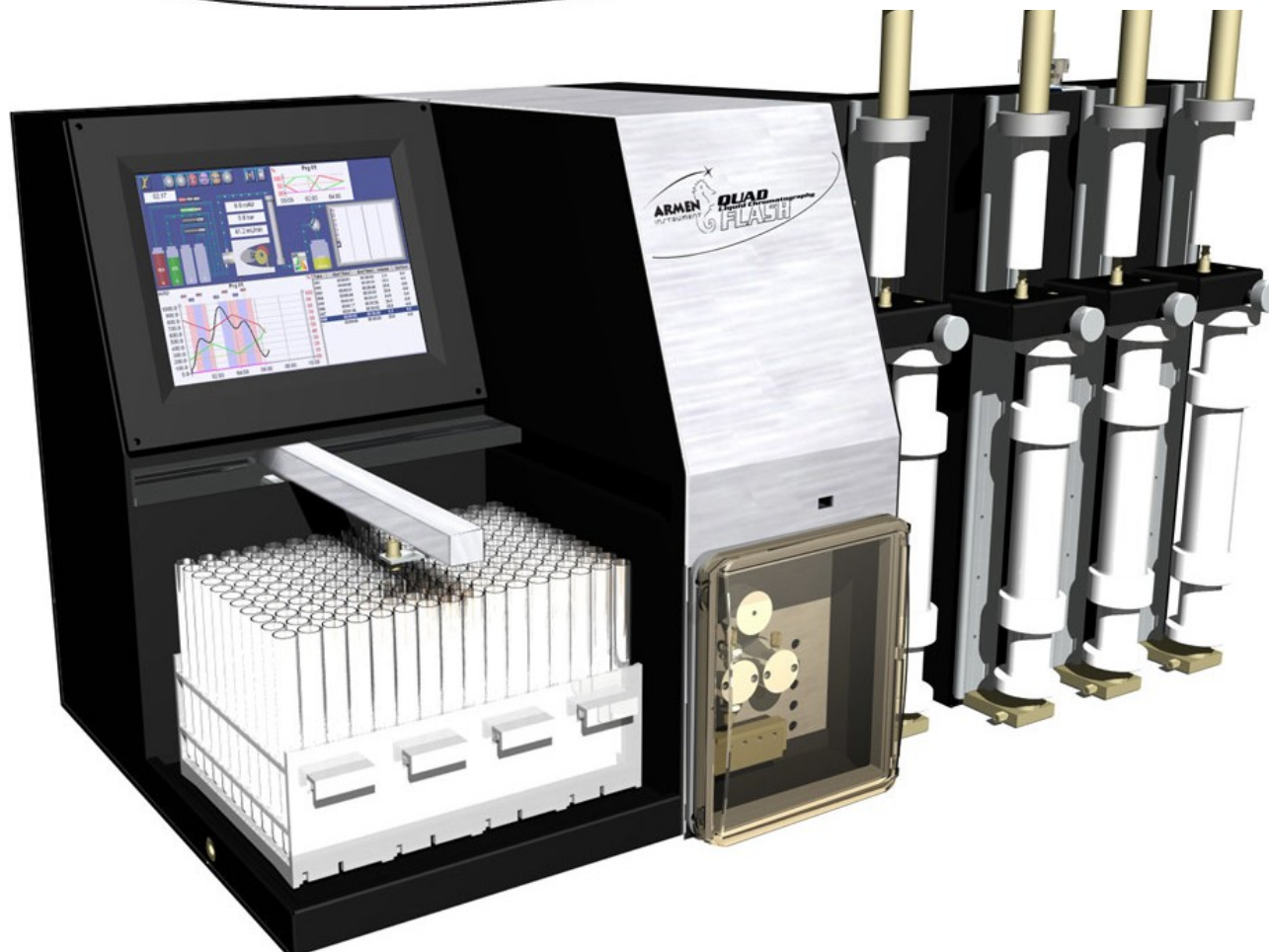


Fully
automated
solution

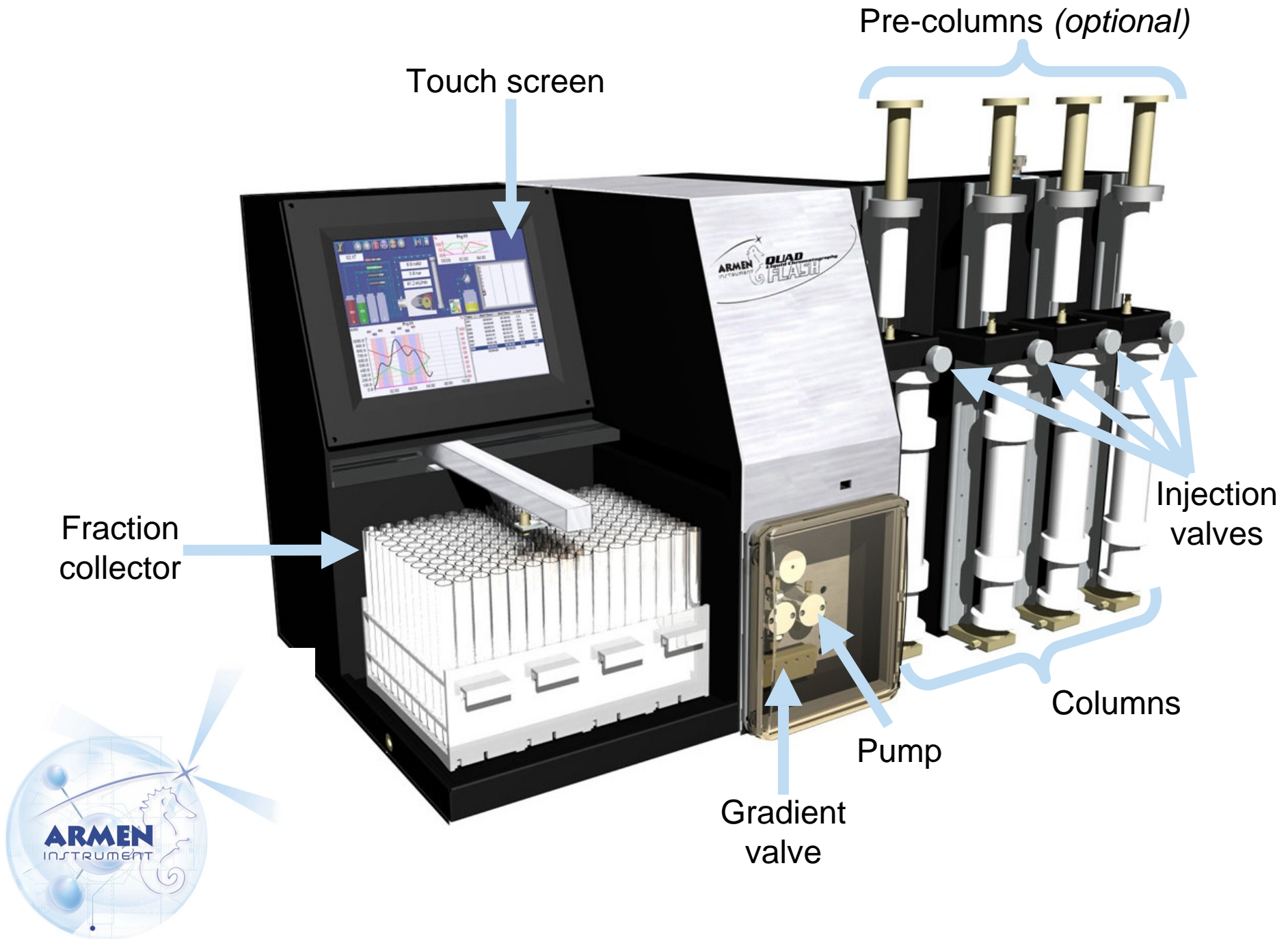
-

For
fast
and
reliable
purification



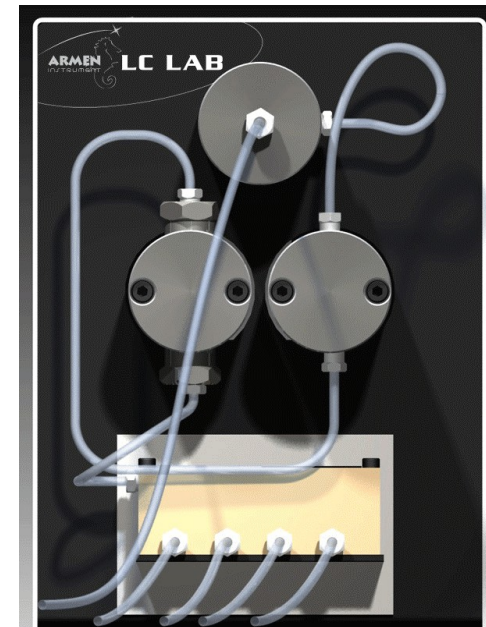
HROMalytic Chromatography
Products '08
Australian Distributors ECHnology

www.chromtech.net.au E-mail : info@chromtech.net.au Tel : +61 3 9762 2034 Fax : +61 3 9761 1169



Pump :

- Flowrate : up to 100, 200 or 300 mL/min
 - Maximum pressure : 25 bars
 - Gradient : binary or quaternary
-
- ✓ High-performance serial double piston pump,
 - ✓ Very robust,
 - ✓ Leak sensor,
 - ✓ Little routine maintenance.



Column :

- New cartridges for Flash chromatography : Merck Chimie SAS
- Weight of silica : **from 2.5 to 600 g**



- ✓ All columns with fittings can be connected,
- ✓ Broad range of cost-efficient, ready to use column cartridges made of high-purity polypropylene and compatible with all normal phase and reverse phase solvents.



Injection unit :

- Use of a 4-way valve adjustable in height to adapt to the columns previously mentioned.
- All kind of columns from any other supplier can be connected.
- Two types of injection are possible :
 - Manual injection of liquid samples direct on column using a vertical syringe (pump stopped).
 - Injection through a pre-column (pump running).
- + An optional manual through loop injection (6-way valve).
- **No dead volume.**

(very short distance between the injection valve and the column)



Detector :

Two types of UV detector are available : Knauer



- Filter photometer : K-2001

- 4 selectable wavelengths : 200, 220, 254, 280 nm

- Deuterium lamp.

- Spectro-photometer : K-2501 & K-2600*

- Wavelength range : 200 – 740 nm (* : 2 λ simultaneously)

- Deuterium lamp standard, tungsten halogen lamp optional

They are equipped with a flow cell 0.5 - 1000 mL/min, 1/8".

- ✓ Dedicated for the preparative chromatography,
- ✓ Wide range of absorbance,
- ✓ Continuous flow,
- ✓ Leak sensor,
- ✓ Other cells on request.



Fraction Collector :

- 4 racks of 44 tubes
- 25 or 32 mL per tube
- ✓ Direct manual fractionation during the run : fractionation on the fly.
- ✓ Collection according to volume, time window and signal threshold.
- ✓ Local minimum mode for automatic fractionation on non separated peaks.
- ✓ 3-way valve for switching between waste and collect position.
- ✓ Additional fraction collector to increase the collect capacity (optional).
- ✓ Integrated to the system.
- ✓ Leak sensor.



Control and data processing :

- Build in industrial PC and 12” touch screen.
- Use of the software “Armen Glider Flash”
 - ✓ Direct control of all parameters during the run,
 - ✓ Compatible with Windows 2000 and XP,
 - ✓ Software language : English, French, Spanish, German,
 - ✓ One screen shows all instruments status,
 - ✓ Possibility for direct fractionation during the run,
 - ✓ Fractionation : time, level, slope (“Local minimum” available),
 - ✓ Data transfer via remote support,
 - ✓ Reports (settings, chromatograms, fraction tables with vial numbers),
 - ✓ Data import and export functions,
 - ✓ Data exportable in Excel.



Multi-column device :

- Allow to install up to 4 columns from 2.5 to 600 grams.
- Adapted to all kind of columns from different suppliers.

- ✓ Multi-sample automation,
- ✓ Multi-mode injection for each column,
- ✓ Open access to all users without waiting in line,
- ✓ Loading new methods during the run.

➔ Increase work efficiency and productivity.



Software :

Menus bar →

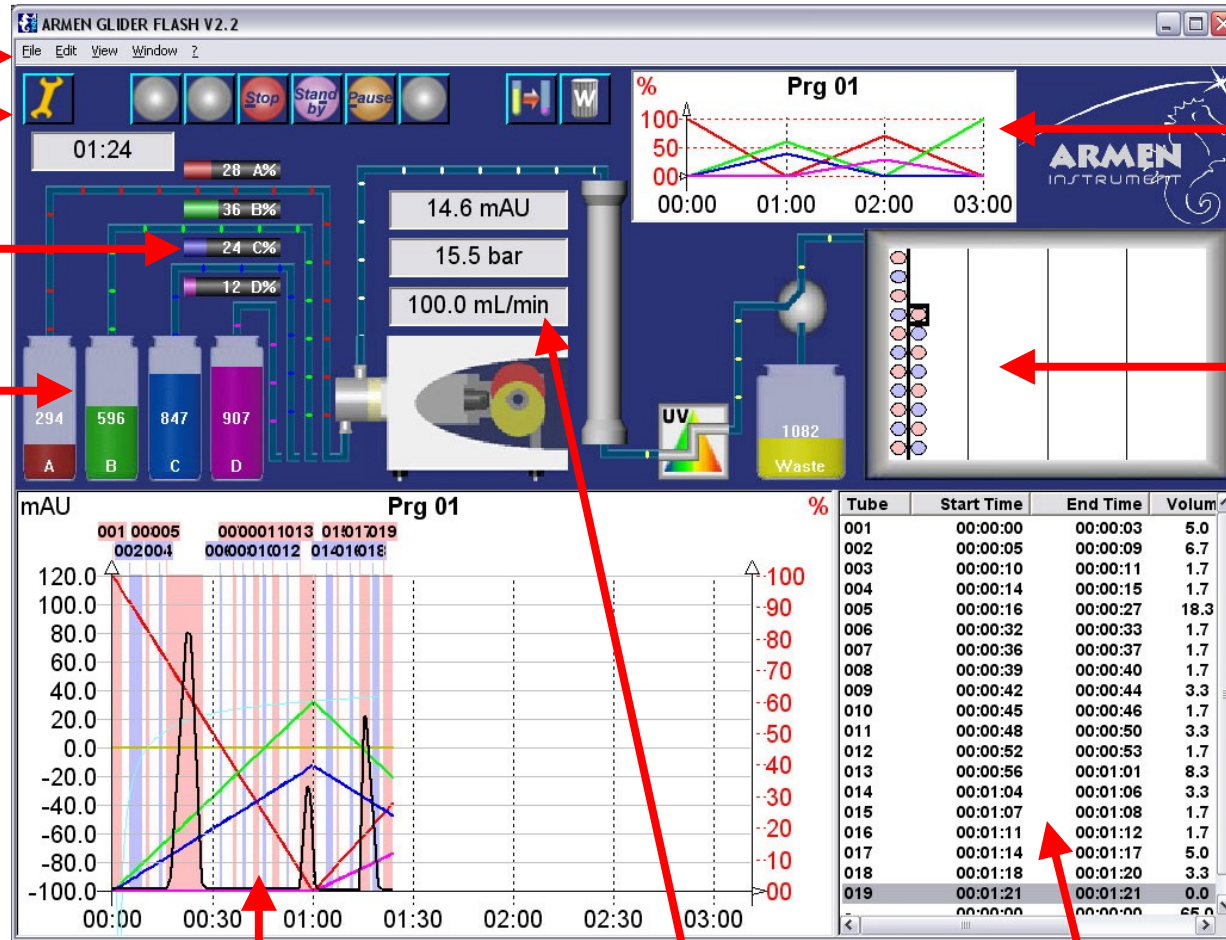
Buttons bar →

Evolution of each way of the elution gradient →

Reservoirs of solvents and waste with levels and filling rates →

Preview of complete gradient of program in progress →

Fraction collector →



Chromatogram
Gradient evolution
Fractions

Status overview
(Elapsed time,
flowrate, pressure and
detector signal)

Collection table
(times, volumes, ...)



Connections :

- 10-pin connector for external command cord (start, stop).
- 2 separated USB port (USB key, portable hard disk, printer, ...).

Specifications :

- Max. pressure : 25 bar
- Max. flowrate : Up to 100 mL/min (or optionally up to 200 or 300 mL/min)
- Fraction volume : 4 racks with 44 x 25 mL (or 32 mL) tubes standard
> Others racks as option (funnel and custom racks)
- Detector wavelengths : - 200, 220, 254, 280 nm for filter photometer
- From 190 to 740 nm for spectrophotometer
- Injection : Liquid or solid sample
- Power requirements : 220 / 240 V - 50 Hz
- Dimension : Width = 675 mm (+ 410 mm for the 3 extra columns)
Height = 580 mm
Depth = 570 mm



SPOT QUAD advantages :

- ✓ Complete solution with one instrument,
- ✓ Powerful and robust equipment,
- ✓ Easy to use,
- ✓ Open system with easy access,
- ✓ Multi-sample automation,
- ✓ Installation of others columns during the purification in progress,
- ✓ Increase work efficiency and productivity,
- ✓ Wide range of columns,
- ✓ Easy column connection (luer fittings),
- ✓ Dry loading cartridge (with pre-column installation),
- ✓ No dead volume,
- ✓ Wide flowrate range,
- ✓ Powerful fractionation modes,
- ✓ Low maintenance needs,
- ✓ Only one software screen necessary,
- ✓ No keyboard or mouse on the laboratory bench.

