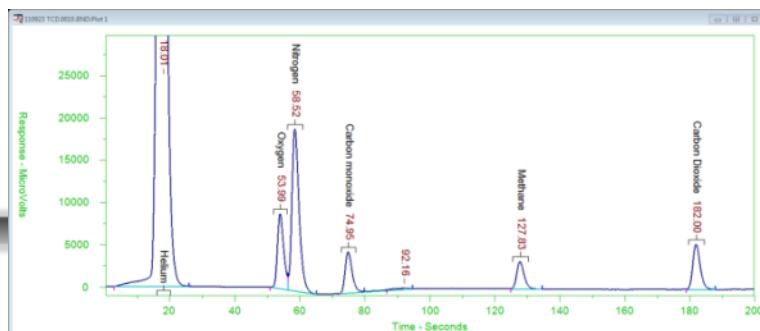
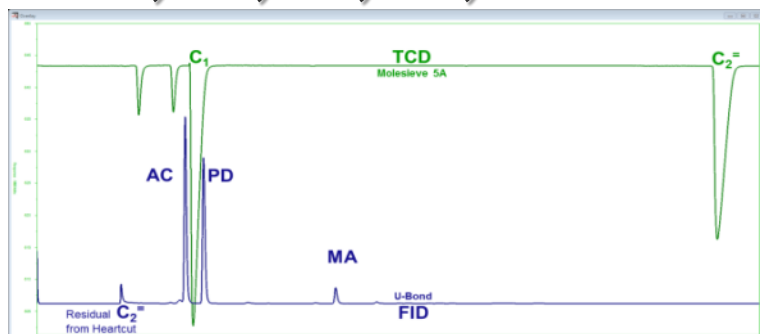


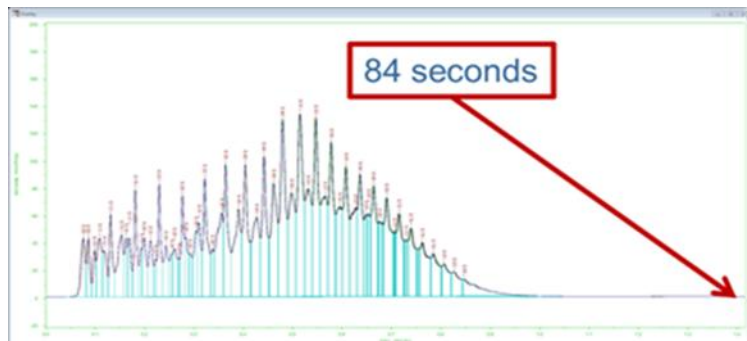
Application Range Examples



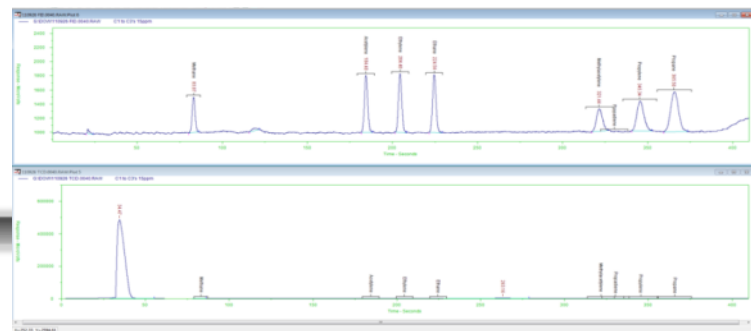
● He, O₂, N₂, CO, C₁ CO₂



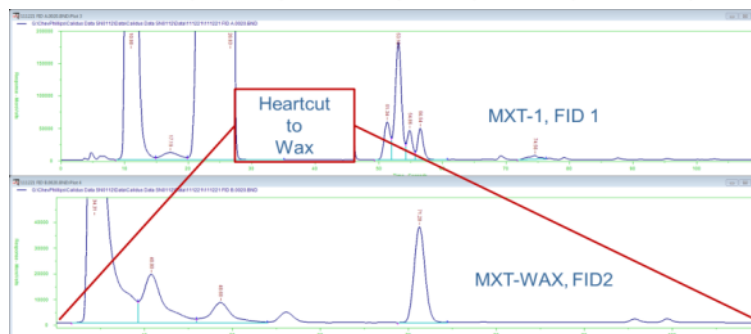
● Air, CO, C₁, C₂=, AC, PD, MA



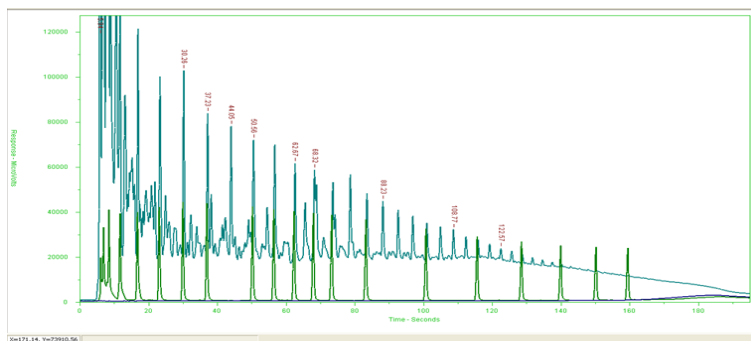
● ASTM D-2887 & UltraFast D-2887



● C₁, AC, C₂=, C₂, MA, C₃=, C₃



● C₆ to C₉ Heartcut



● Crude Characterizations



Australian Distributors
Importers & Manufacturers
www.chromtech.net.au

12/13

Website NEW : www.chromalytic.com.au E-mail : info@chromtech.net.au Tel: 03 9762 2034 . . . in AUSTRALIA