



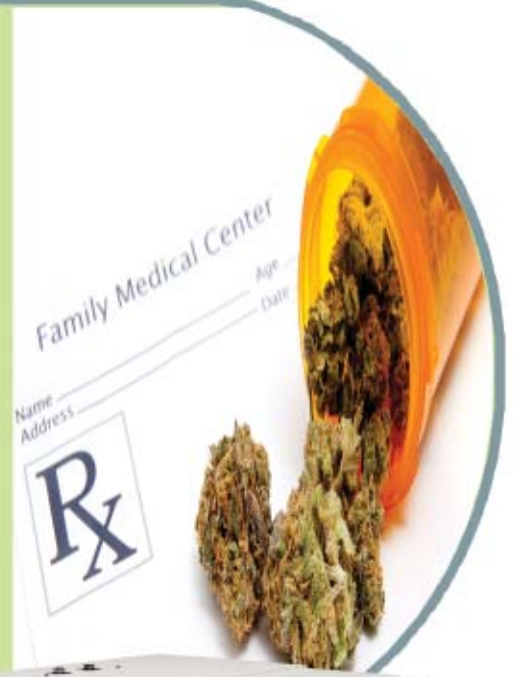
# Pharmaceuticals

## Cannabis - Medical Marijuana



www.dps-instruments.com

Medical cannabis, also referred to as medical marijuana, refers to the use of constituents of cannabis, THC and other cannabinoids, as a physician-recommended form of medicine therapy. The medicinal value of cannabis has several well-documented beneficial effects, such as the amelioration of nausea and vomiting, stimulation of hunger in chemotherapy and AIDS patients, lowered intraocular eye pressure for treating glaucoma, as well as general analgesic pain relieving effects. DPS has configured the Cannabis GC Systems with the sensitive FID detector to identify the major cannabinoids THC, CBD, and CBN as well as identifying and determining Terpene concentrations. For extra product safety we can add our ultra-sensitive BCD Detector to analyze for Pesticide contamination at the same time. The Series 600 GC is for analyses in the lab, or use the Portable Companion 2 GC System for analyses in the growing fields, or at the dispensary. The fast heating and rapid cooling column oven in every DPS GC vastly increases your sample throughput. The fully integrated Cannabis GC Analyzer Systems are small and lightweight and all DPS systems are modular for expandability, upgrades, and easy service.

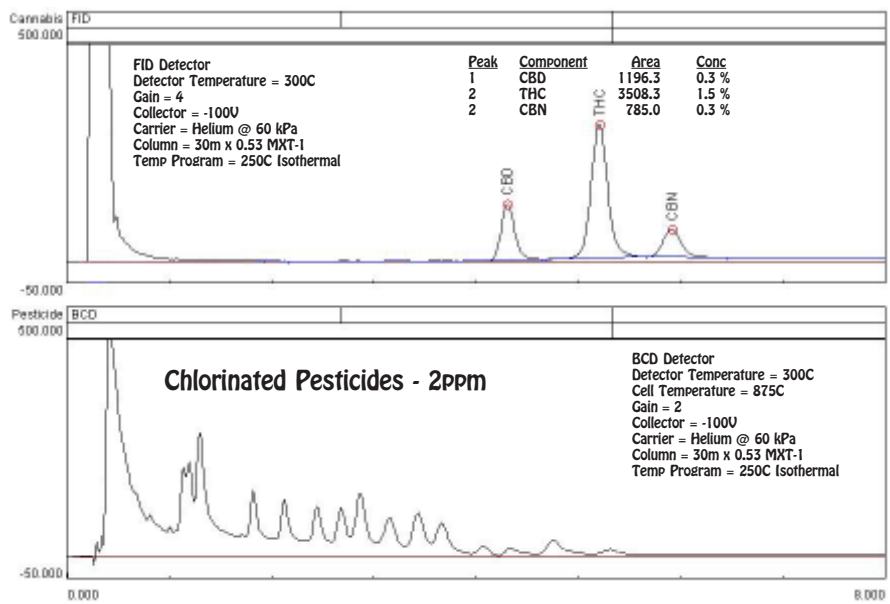


Series 600 GC

### Available Configurations Include:

- 600-C-107 - Series 600 Cannabis GC Analyzer (FID, BCD, 2 x 30m)
- 500-C2-107 - Companion 2 Portable Cannabis GC Analyzer (FID, BCD, 2 x 30m)

### Cannabinoids & Pesticides



Companion 2 Portable GC

11/2015 Specifications may change without notice.