



# Personal Care

## Cleaning Solvents



www.dps-instruments.com

The average cleaning products industry consumer uses a wide range of products to promote both personal and public health. Soaps, detergents, deodorants, mouthwashes, rug cleaners, drain openers, and a host of other products make up this multi-billion dollar worldwide industry. These products are designed to improve personal hygiene, reduce levels of bacteria, improve personal appearance, and offer cleaning convenience for the consumer. To help ensure consistent product performance and environmental safety there is an ongoing need to test the solvents contained on both the raw and final products. The DPS Cleaning Solvents GC Systems, equipped with a high resolution column and the sensitive FID detector is a great place to start. The extract or a liquid sample can be directly injected by hand, or a flake, solid, or cream sample can be placed in a headspace vial and automatically heated and injected using our built-in Headspace Concentrator. The Series 600 GC is for analyses in the lab, or use the Portable Companion 1 GC Systems for analyses right where the samples are taken. The fully integrated Cleaning Solvents GC Analyzer Systems are small and lightweight and all DPS systems are modular for expandability, upgrades, and easy service.



### Available Configurations Include:

- 600-C-081 - Series 600 Cleaning Solvents (FID, Headspace, 30m)
- 500-C-081 - Companion 1 Portable Cleaning Solvents (FID, Headspace, 30m)

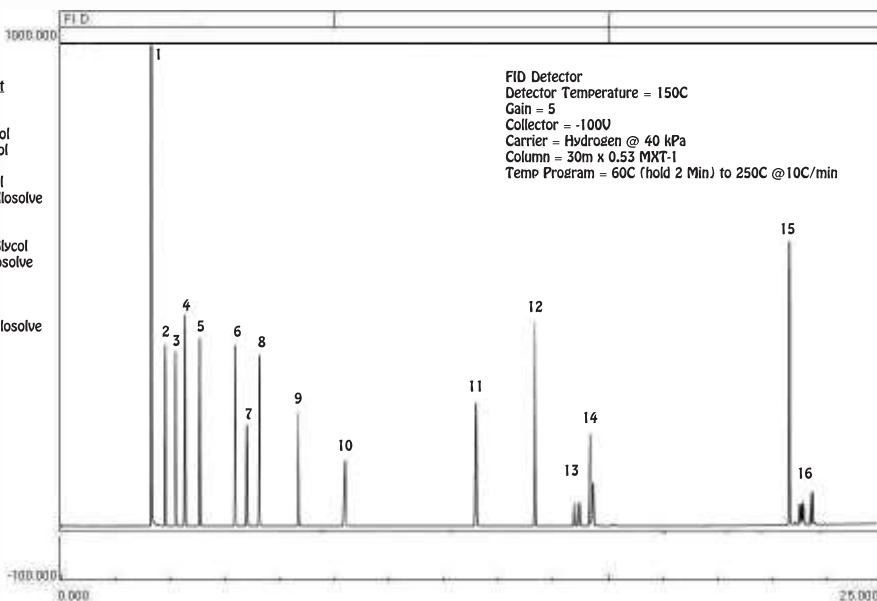


Series 600 GC

### Cleaning Solvents



Peak	Component
1	Methanol
2	Ethanol
3	iso-propanol
4	tert-Butanol
5	n-Propanol
6	iso-Butanol
7	Methyl Cellosolve
8	n-Butanol
9	Cellosolve
10	Ethylene Glycol
11	Butyl Cellosolve
12	Limonene
13	DPGME
14	DEGEE
15	Phenyl Cellosolve
16	TPGME



11/2015  
Specifications may change without notice.

Companion 1 Portable GC  
(with Headspace Concentrator)