



Environmental Diesel Range Organics



www.dps-instruments.com

Diesel has been used for heating homes and as a fuel for trucks and engines for over 100 years. Diesel is not environmentally friendly when it leaks out of holding tanks and seeps into the soil and subsequent groundwater. Modern double layer tanks have a built-in second containment system to handle leaks and these have been installed underground in many areas. However, many older tanks are still in existence and these are prone to leaks causing local contamination and the need for thousands of sample analyses per year. For your convenience, DPS has configured the Diesel Range Organics Analyzers to help you define the extent of the contaminant plume as well as assist you in determining the age of the spill. The sensitive FID detector is ideal for identifying the hydrocarbon backbone found in Diesel and the fast heating and rapid cooling column oven in every DPS GC vastly increases your sample throughput. The fully integrated Diesel Range Organics GC Analyzer Systems are small, lightweight, and rugged to go where ever you need them. All DPS systems are modular for expandability, upgrades, and easy service.



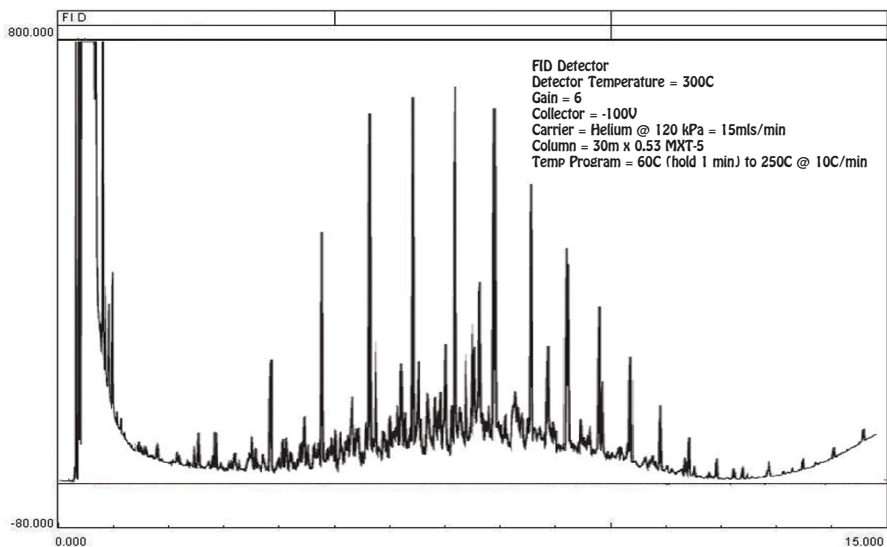
Available Configurations Include:

- 600-C-020 - Series 600 Diesel Range Organics GC Analyzer (FID, 30m)
- 500-C-020 - Companion 1 Portable Diesel Range Organics GC Analyzer (FID, 30m)



Series 600 GC

Diesel Range Organics



Companion 1 Portable GC

11/2015 Specifications may change without notice.