



Environmental

Polychlorinated Biphenyls - PCB's



www.dps-instruments.com

Polychlorinated biphenyls (PCB's) are synthetic chemical compounds that are relatively fire-resistant, very stable, and do not conduct electricity. These properties have made them desirable components in a wide range of industrial and consumer products for the past 80 years. Unfortunately, PCB's have been routinely disposed of over the years, without any precautions being taken. As a result, large volumes of PCB's have been introduced into the environment through open burning, vaporization from paints and plastics, by dumping into sewers and streams, and by dumping into the oceans. Many of the PCB's dumped years ago are still around today because of their extreme resistance to chemical and biological breakdown. The DPS PCB's GC Analyzers are designed to help clean up this mess. The nonradioactive BCD Detector can detect and identify the specific PCB contamination quickly. The fully integrated PCB's GC Analyzer systems are small and lightweight and all DPS systems are modular for expandability, upgrades, and easy service.



Series 600 GC

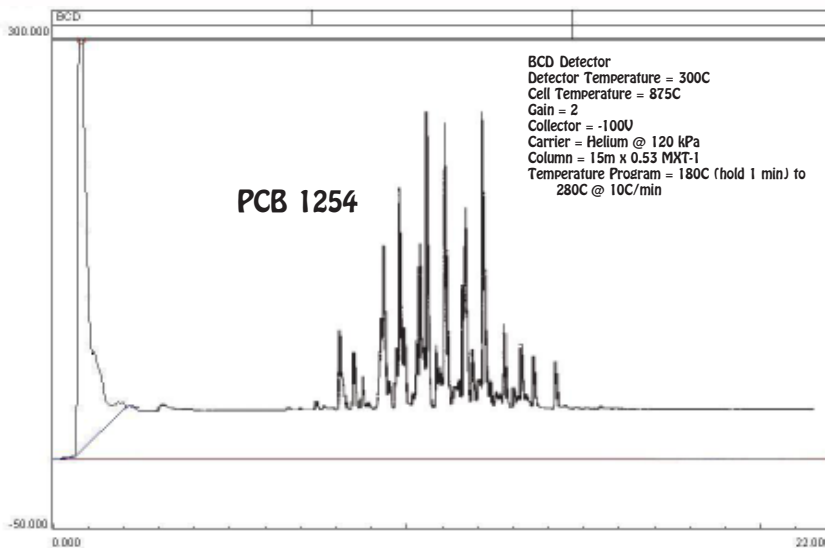
Available Configurations Include:

- 600-C-026 - Series 600 PCB's GC Analyzer (BCD, 15m)
- 500-C2-026 - Companion 2 Portable PCB's GC Analyzer (BCD, 15m)

PCB's - Arochlor Screening with BCD



Companion 2 Portable GC



11/2015
 Specifications may change without notice.