



Solvents & Chemicals

Formaldehyde



www.dps-instruments.com

Formaldehyde is a simple, highly reactive hydrocarbon that is used as a fixative in the pathology laboratory, as a fumigant, disinfectant, in photographic materials, and in the manufacture of foam insulation, cosmetics, drugs, clothing, and furniture. It is also a major toxic component of photochemical smog. Because of its extreme reactivity, even with itself, it cannot be readily isolated or handled in the pure state. Therefore, it is produced and marketed as an aqueous solution. Due to the health concerns arising from exposure to formaldehyde there has been an increasing need for the analysis of this reactive compound. To meet this need, the DPS Formaldehyde GC Systems are configured with the latest designed high resolution capillary column and the Sensitive HID detector to measure water and other impurities in formaldehyde. The Series 600 GC is for analyses in the lab, or use the Portable Companion 1 GC System for analyses right where the samples are taken. The fast heating and rapid cooling column oven in every DPS GC vastly increases your sample throughput. The fully integrated Formaldehyde GC Analyzer Systems are small and lightweight and all DPS systems are modular for expandability, upgrades, and easy service.



Series 600 GC

Available Configurations Include:

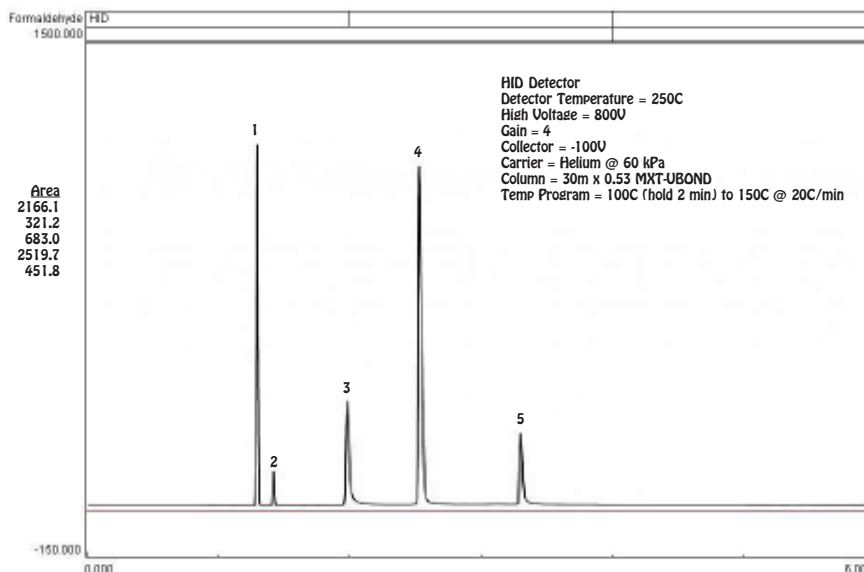
- 600-C-117 - Series 600 Formaldehyde GC Analyzer (HID, 30m)
- 600-C-117 - Companion 1 Portable Formaldehyde GC Analyzer (HID, 30m)

Formaldehyde in Water



Companion 1 Portable GC

Peak	Component	Area
1	Air	2166.1
2	Carbon Dioxide	321.2
3	Formaldehyde	683.0
4	Water	2519.7
5	Methanol	451.8



11/2015 Specifications may change without notice.