



Forensics

Arson Accelerants



www.dps-instruments.com

An accelerant is a fuel that causes a fire to burn hotter, spread more quickly, or be unusually difficult to extinguish. Investigators can prove that a fire was set intentionally by finding an accelerant, such as gasoline, kerosene, turpentine, or diesel fuel at the scene of a fire. Various techniques such as DFLEX strips, headspace concentration, or sample extraction can be used to detect accelerants at a fire scene. Although the sampling techniques vary the DPS Arson Accelerants GC Systems are configured for multiple sampling techniques. An extract can be directly injected by hand, or a debris sample can be placed in a vial and automatically heated and injected using our built-in Headspace Concentrator. In either case, a high resolution column and the sensitive FID detector quickly identify the accelerant fingerprint. The Series 600 GC is for analyses in the lab, or use the Portable Companion 1 GC Systems for analyses right where the samples are taken. The fully integrated Arson Accelerants GC Analyzer Systems are small and lightweight and all DPS systems are modular for expandability, upgrades, and easy service.



Series 600 GC

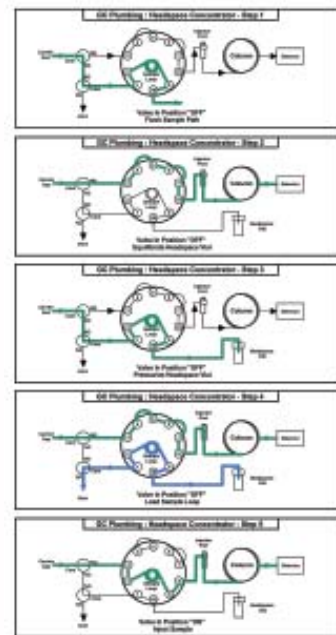
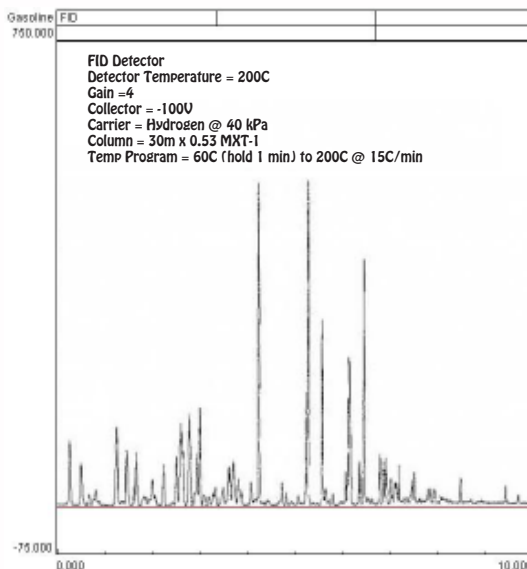
Available Configurations Include:

- 600-C-061 - Series 600 Arson Accelerants GC Analyzer (FID, Headspace, 30m)
- 600-C-061 - Companion 1 Portable Arson Accelerants GC Analyzer (FID, Headspace, 30m)



Companion 1 Portable GC (with Headspace Concentrator)

Gasoline - Headspace



11/2015 Specifications may change without notice.