



# Forensics

## Forensic Solvents



www.dps-instruments.com

This broader group of organic solvents contains many of the compounds identified by the more specifically configured Blood Alcohol and Inhalants GC Systems. These solvents can be major components, or impurities in household cleaners, paints, glues, and many other readily available products, as well as solvents found in biological fluids. Since you are not quite sure what you are going to find, or what concentration it may be, we have configured the DPS Forensic Solvents GC Systems with the highest resolution general purpose column available and the sensitive FID detector. The Series 600 GC is for analyses in the lab, or use the Companion 1 GC Systems for analyses right where the samples are taken. The fast heating and rapid cooling column oven in every DPS GC vastly increases your sample throughput. The fully integrated Forensic Solvents GC Analyzer Systems are small and lightweight and all DPS systems are modular for expandability, upgrades, and easy service.



Series 600 GC

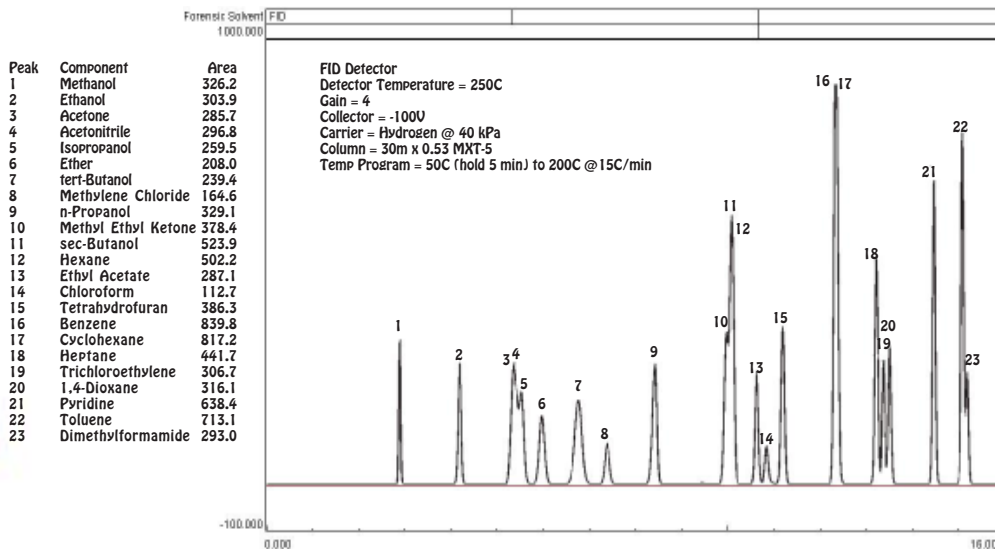
### Available Configurations Include:

- 600-C-065 - Series 600 Forensic Solvents GC Analyzer (FID, 30m)
- 500-C-065 - Companion 1 Portable Forensic Solvents GC Analyzer (FID, 30m)

### Forensic Solvents



Companion 1 Portable GC



11/2015  
Specifications may change without notice.