



Petrochemical Bio-Diesel



www.dps-instruments.com

Bio-diesel is a renewable fuel used as a substitute for petroleum diesel fuel. Biodegradable and nontoxic, bio-diesel is made from soy oil, vegetable oil, recycled cooking oil, or animal fat. Bio-diesel made from vegetable oils and animal fat perform like petroleum diesel, but are much cleaner burning with reduced emissions. A high content of free and total glycerin lead to buildup and poor engine performance. Consequently, the glycerin content is one indicator of the quality of the bio-diesel fuel. For your convenience, DPS has configured the Bio-diesel GC Analyzers to help you define the free and total glycerin content using our standard cool on-column injector, guard column, analytical column, and our sensitive FID detector. The fast heating and rapid cooling column oven in every DPS GC vastly increases your sample throughput. The fully integrated Bio-diesel GC Analyzer Systems are small, lightweight, and rugged to go where ever you need them. All DPS systems are modular for expandability, upgrades, and easy service.



Available Configurations Include:

- 600-C-031 – Series 600 Bio-diesel GC Analyzer (FID, 10m)
- 500-C-031 – Companion 1 Portable Bio-diesel GC Analyzer (FID, 10m)

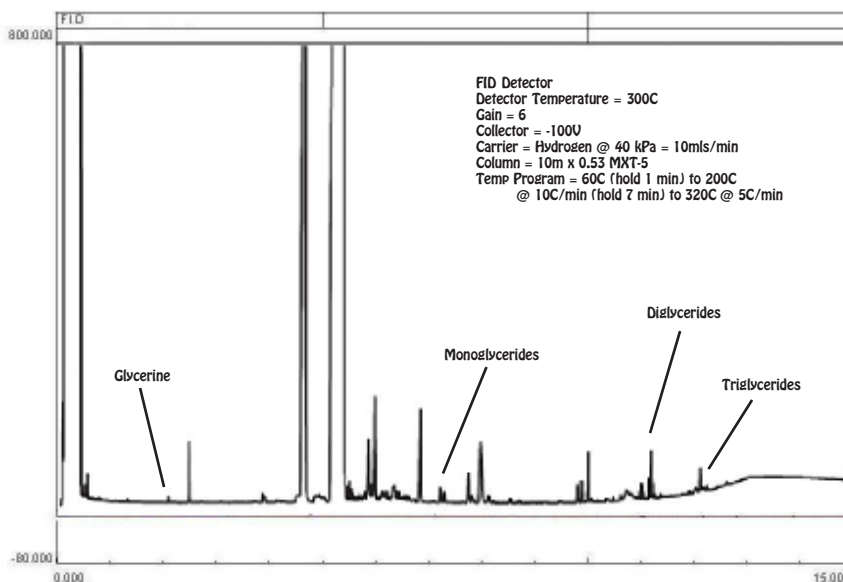


Series 600 GC

Glycerine in Bio-Diesel



Companion 1 Portable GC



11/2015
Specifications may change without notice.