

# Foods, Flavors, & Fragrances

## FRUIT RIPENING - ETHYLENE



www.dps-instruments.com

**R**ipening agents are used to speed the ripening of fruit. This allows many fruits to be picked prior to full ripening, which is useful since many ripe fruits do not ship well. For example, bananas are picked when green and artificially ripened after shipment by being gassed with the ripening agent ethylene. In nature, ethylene is produced and released by rapidly-growing plant tissues, such as the tips of roots, flowers, and damaged tissue. This hormone promotes the starch in the fleshy part of the fruit to be converted to sugar. DPS has configured the portable and rugged Companion Ethylene GC to help detect this hormone in the air surrounding the fruit. Our ultra-sensitive PID detector is ideal for identifying ethylene at low parts per billion (ppb) levels and a special column separates Ethylene from the Oxygen in air. The fast heating and rapid cooling column oven in every DPS GC vastly increases your sample throughput. The fully integrated Ethylene GC Analyzer System is small, lightweight, and rugged to go where ever you need it. All DPS systems are modular for expandability, upgrades, and easy service.

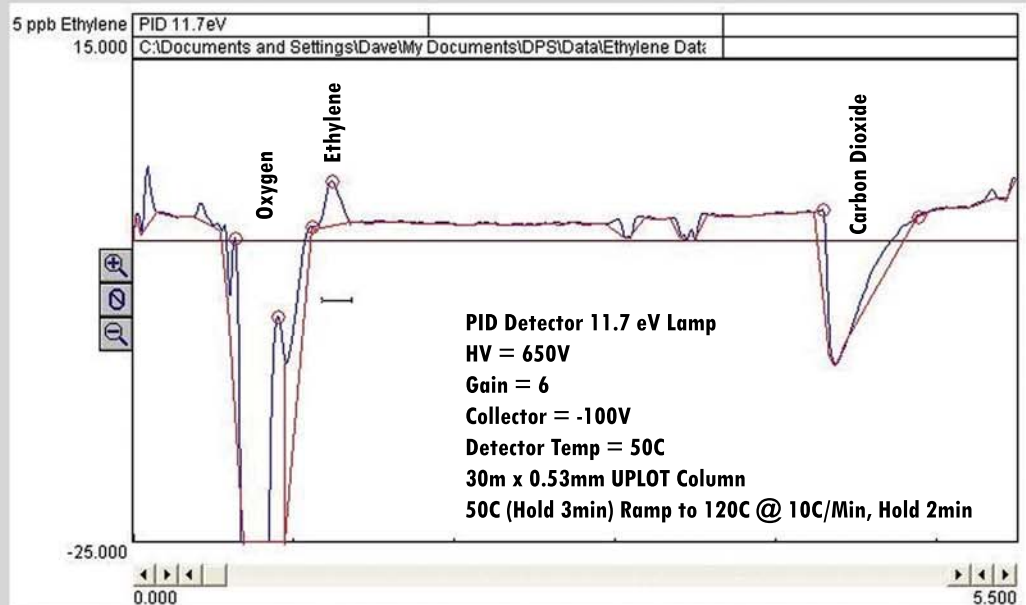


### Available configurations include:

500-C-050 - Companion Portable Ethylene GC Analyzer (PID 11.7eV Lamp, 30m)

500-C-051 - Companion Automated Ethylene GC Analyzer (PID 11.7eV Lamp, 30m, Gas Sample Valve, Valve Oven, Vacuum Pump)

### 5 ppb Ethylene in Air



4/2010  
Specifications may change without notice.