

# Environmental Analyses

## EXPLOSIVES



www.dps-instruments.com

Since the Chinese first mixed gun powder, people have been devising ways of harnessing its power to move mountains in the name of progress, or to keep enemies at bay. For more than a century many parts of the world have been littered with unexploded ordinances. Bombs, shells, and land mines create a current and future threat to ourselves and our kids. DPS has configured the Explosives Analyzer for the lab to identify the nature and type of explosive. We have also configured the portable and rugged Companion GC to help detect explosives in the field. The sensitive TID detector is ideal for identifying the nitrosamines and nitro-aromatic compounds responsible for the deadly nature of the ordinances. The fast heating and rapid cooling column oven in every DPS GC vastly increases your sample throughput. The fully integrated Explosives GC Analyzer System is small, lightweight, and rugged to go where ever you need it. All DPS systems are modular for expandability, upgrades, and easy service.



### Available configurations include:

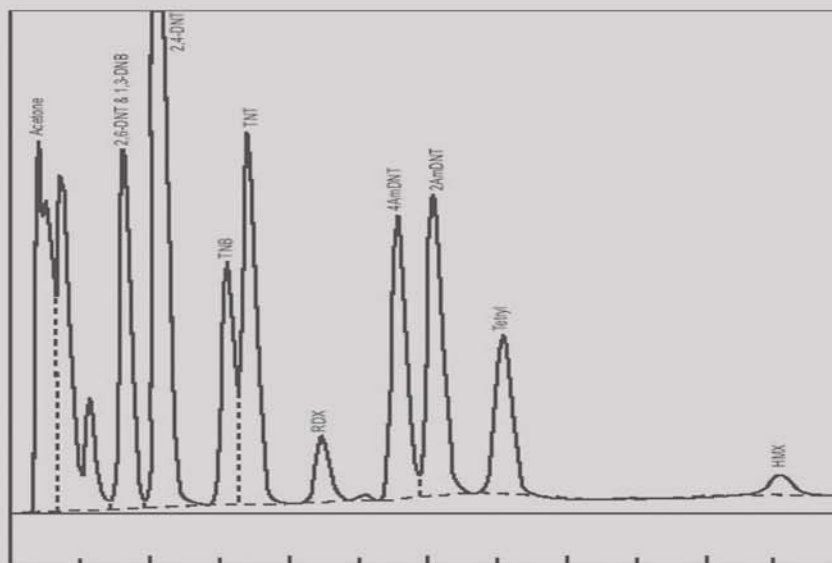
500-C-023 - Companion portable Explosives GC Analyzer (TID, 15m)

600-C-023 - Series 600 Explosives GC Analyzer (TID, 15m)

600-A-050 - Liquid Autosampler, 110 - 2ml Vials



### Method 8330 Explosives Analytes



2/2010  
Specifications may change without notice.



**HRMalytic** +61(0)3 9762 2034  
**ECH**nology Pty Ltd

Australian Distributors; Importers & Manufacturers

Website : www.chromtech.net.au E-mail : info@chromtech.net.au TelNo : (03) 9762 2034 . . . in AUSTRALIA