

## Separation Example: Honokiol and Magnolol from Houpu Extract

The separation of two isomers Honokiol and Magnolol, which are the main bioactive constituents from *Houpu*, is a purification that is challenging, but necessary in the development of a Chinese traditional medicine.

### HPCCC Conditions:

Solvent system: Hexane-Ethyl Acetate  
-Methanol-Water (1.0:0.4:1.0:0.4)

Detection: UV at 254 and 320nm.

Operating in Normal phase

Mini HPCCC column volume: 17.4ml.

Mini mobile phase flow rate 2ml/min.

Mini loading: 90mg loaded in 0.9ml

Midi HPCCC column volume: 950ml.

Midi mobile phase flow rate 100ml/min.

Midi loading: 5g H&M Crude dissolved in 50ml

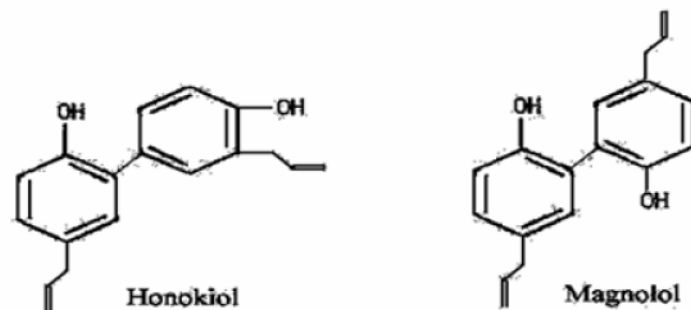
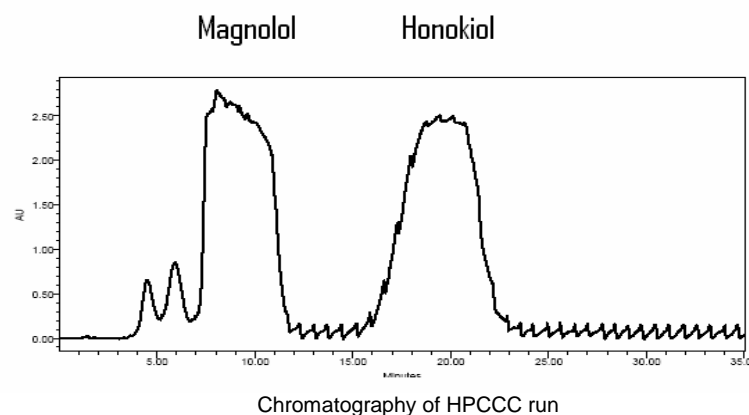
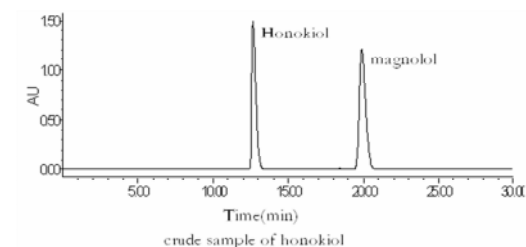


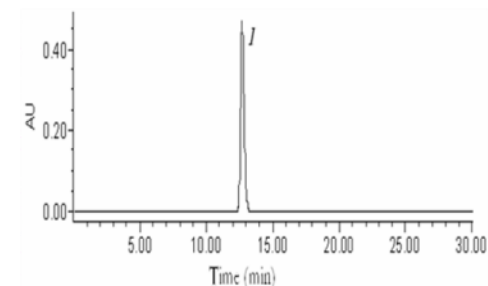
Fig 1. Chemical structures of honokiol and magnolol



HPLC analysis of crude extract:



HPLC Analysis of Magnolol:



HPLC Analysis of Honokiol:

