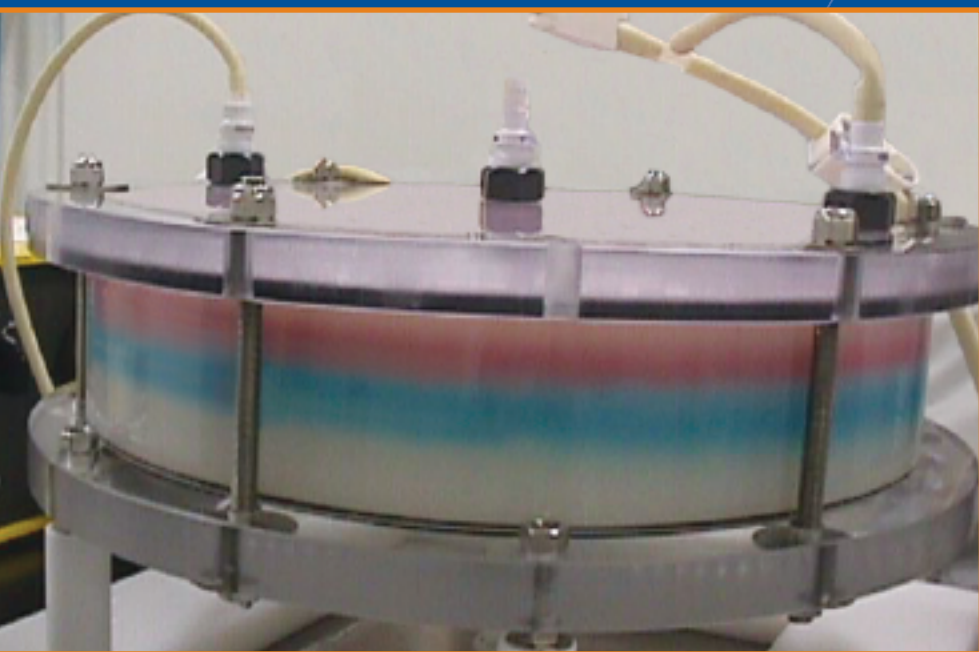


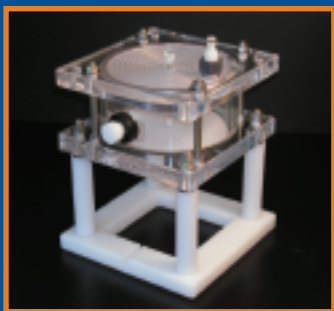
# IsoKrom™ Columns

Economical/Sanitary  
Process Scale Technology



## HIGHLIGHTS:

- All wetted parts are either autoclavable, disposable and/or can be completely taken apart for thorough cleaning.
- Fixed volume, packing through the wall.
- Reduced dead-space by volume (V) and length (L).
- Simple & Robust - IsoKrom™ is designed around standard industrial parts, which lowers the price and assures quality.
- No metal parts contact the solution.



# IsoKrom™ Columns

Acrylic columns for preparative low-medium pressure bio-chromatography available from ISO 9000 certified manufacturer

"In a multi-product environment, we install new mesh for each new product run to prevent carry-over contamination. In contrast to IsoKrom, frit replacement in other large columns is expensive, laborious and/or requires factory service".

J. Burton Lee, President,  
Lee BioSolutions Inc., MO

"Processes have never been this robust with other systems...[IsoKrom] allows a much faster cycle time for a column run. Production personnel really appreciate when different operators, on different days and with different batches, can consistently reproduce the performance".

Fred Drewe, Ph.D, President,  
Drewe Browning Strickler, TX

- Improved column sanitation with a packed bed in (CIP) as well as in a disassembled state.
- Inexpensive mesh replacement eliminates potential carry-over of sorbent and contaminants.
- No packing valves blocking the mesh, no stagnant pockets. Uniform unobstructed flow through the entire bed.
- Shorter dead-space translates into reduced clearance time ( $=L^2$ ), and/or a more thorough CIP.
- Shortended time for column order delivery. Standard parts (Acrylic tube, Nylon mesh, etc.) are available on short notice.
- Due to lower column cost, each purification step can afford a separate dedicated column, with no need to clean and validate re-packing.
- No issues with rusting at low pH and/or at high Chloride, EDTA and Citrate concentration.

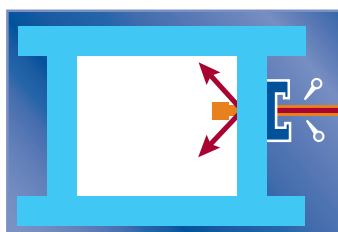
## AVAILABLE STANDARD SIZES\*

Tube ID (cm)      Volume (L) at 20-cm bed

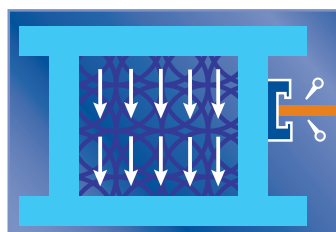
9.5	1.4
13.3	2.8
22.9	8.2
33.0	17.1
47.0	34.7
66.0	68.5
79.0	98.0
102.9	166.2
177.8	496.6
238.8	895.5

\*Custom sizes available upon request.

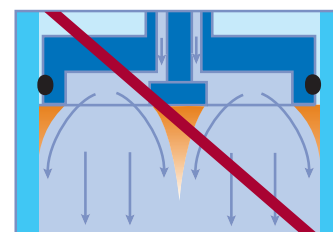
## IsoKrom™ Columns



Pack sorbent slurry into precise fixed volume using sidepacking valve.



Packing valve is retracted flush with the wall eliminating dead volume in column.



Other columns employ center packing valve which creates dead volume.

- All wetted parts are either autoclavable, replaceable and/or can be completely taken apart for thorough cleaning.
- No metal parts contact the solution: no issues with rusting at low pH and/or at high NaCl concentration.

essentialLife Solutions

**HR**OMalytic +61(0)3 9762 2034  
**ECH**nology Pty Ltd

Australian Distributors  
Importers & Manufacturers  
www.chromtech.net.au

12/13

Website NEW : www.chromalytic.com.au E-mail : info@chromtech.net.au Tel: 03 9762 2034 . . . in AUSTRALIA