

NUTECH 8900 PRECONCENTRATOR

This preconcentrator has all the most advanced hardware and software than any other manufacturer of VOC preconcentrators in the market and many unique features that separate us from the competition for the analysis of EPA: TO-14 and TO-15 compounds. The advanced temperature control is one example how we can control variation under +/- 2°C, assuring stable and accurate analysis.

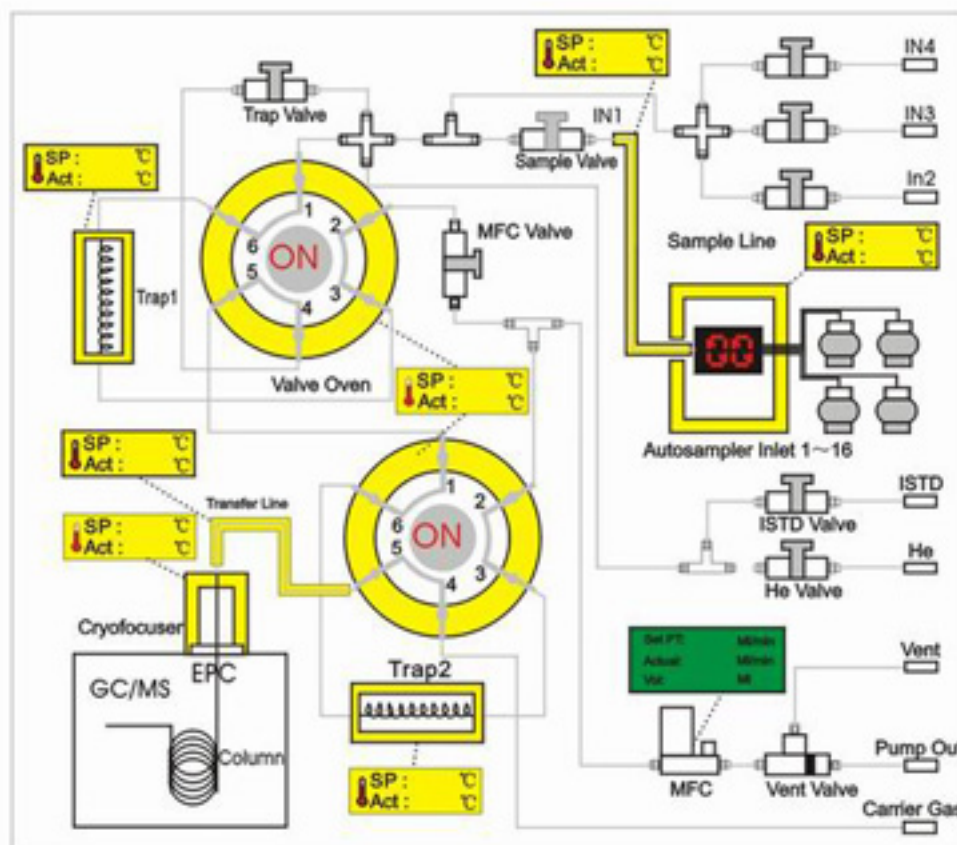


HARDWARE FEATURES

- High sensitivity and wide detection range
- Three stage module: two cryogenic traps and one cryofocuser
- High accuracy and repeatability
- Friendly sample handling
- Three additional sample inlets
- USB interface and user friendly software
- QA/QC, leak check, sequence and method table print outs

SOFTWARE FEATURES

- Built to EPA TO-14, TO-15 methods
- Ability to configure/change methods
- Bypass trap 1 and/or bypass cryofocuser without hardware changes
- Intuitive gas path graphic display
- Adjust sequence control during run
- Comprehensive QA/QC report
- Windows 2000, XP and Vista compatible



Headquarters: GD Environmental Supplies, Inc.
651 N. Plano Rd. #429, Richardson TX 75081
E-mail: drdai@gdair.com
Website: www.nutechins.com, T: 972 480 8908; F: 972 480 8308

3

Sales Office: New Star Environmental, Inc.
3293 Ashburton Chase NE, Roswell GA 30075
E-mail: Sales@NewStarEnvironmental.com
Website: www.NewStarEnvironmental.com, T: 770 998 0296; F: 770 998 9794

NUTECH 8900 PRECONCENTRATOR

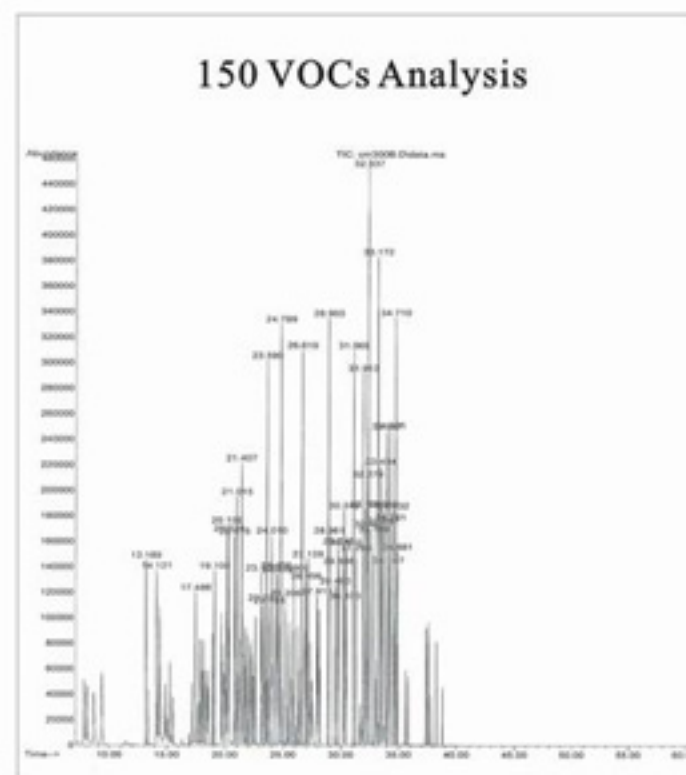
UNIQUE FEATURES

HARDWARE:

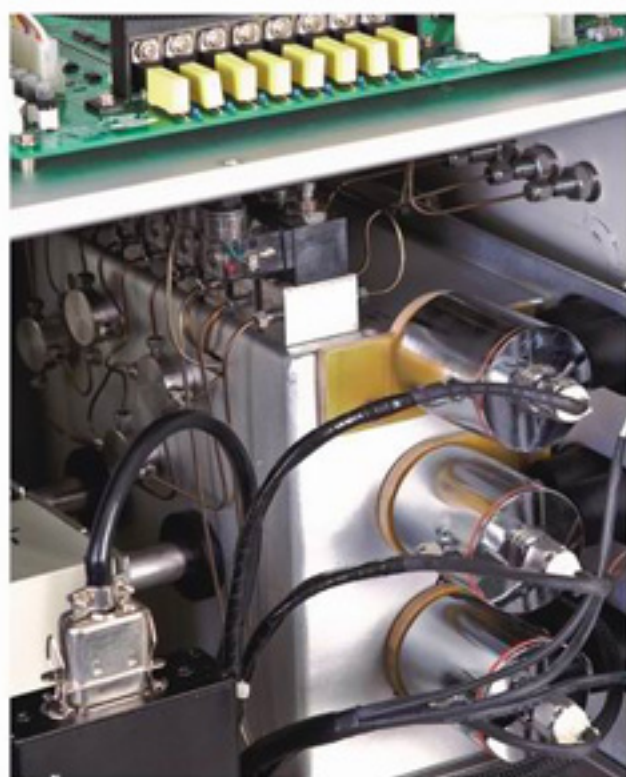
- Switch power supply
- Advanced temperature control
- Compact PCB board

SOFTWARE:

- QA/QC print out end-user friendly
- QA/QC reports listed in a rolling calendar
- Dynamic gas flow display and flow direction for all sample paths



NUTECH 8900 SPECIFICATIONS



- Three stage cryogenic traps
- Glass bead: -190°C to 250°C
- Tenax multimedia trap: -190°C to 250°C
- Cryofocuser: -190°C to 250°C
- Sensitivity and detection range
- 0.1ppbv to percent level for most VOCs
- Concentration ratio: >1000:1
- Accuracy and repeatability
- Within 10% RSD for most VOC compounds with a sample
- Loading range of 4-1000ml
- Sample handling
- All tubes are silica coated stainless steel
- 4-2000ml loading range with 0-100 relative humidity
- MFC operating range 5-120ml/min with +/-2% accuracy with an optional customized flow range
- Temperature control: +/-2°C accuracy
- Gas inlets: independent internal standard inlet and 3 additional sample inlets 16 sample inlets with optional autosampler
- Operating environment: 110v/60hz or 220v/50hz with max 1500w, 0-40°C/90% RH operating range.
- Dimensions: 14" (W) x 20" (H) x 20" (D)
- Weight: 65 lbs.

Headquarters: GD Environmental Supplies, Inc.
651 N. Plano Rd. #429, Richardson TX 75081
E-mail: drdai@gdair.com
Website: www.nutechins.com, T: 972 480 8908; F: 972 480 8308

4

Sales Office: New Star Environmental, Inc.
3293 Ashburton Chase NE, Roswell GA 30075
E-mail: Sales@NewStarEnvironmental.com
Website: www.NewStarEnvironmental.com, T: 770 998 0296; F: 770 998 9794