

Narrow Bore Capillary FID GC System



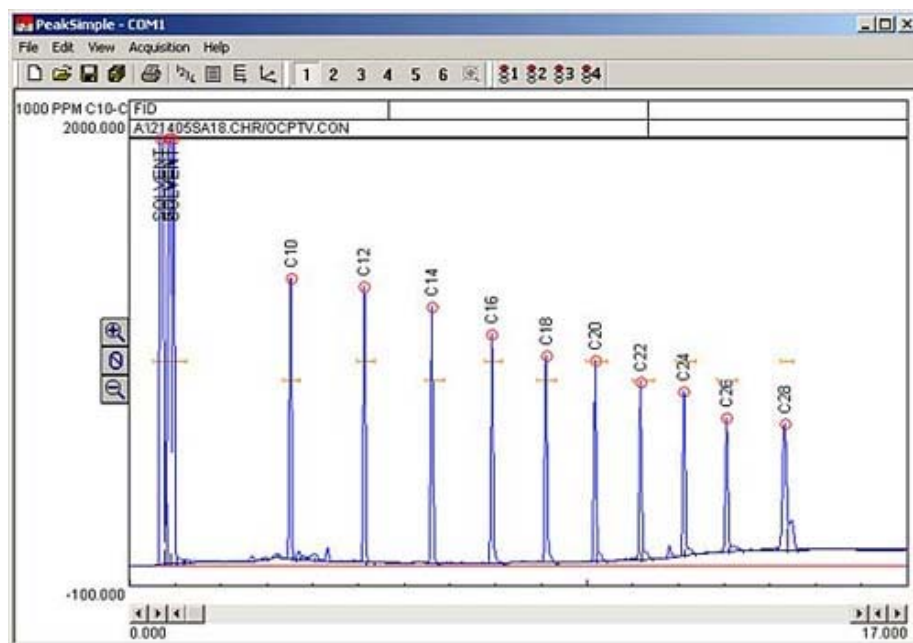
- FID Detector
 - On-Column PTV Injector
 - 30 meter Narrow Bore (0.25mm ID) Capillary Column
 - Built-in, "whisper quiet" Air Compressor
 - Temperature Programmable Column Oven
 - 1 Channel PeakSimple Data System
- ...on the compact [8610C](#) chassis

The Narrow Bore Capillary FID GC System includes everything you need for ultra high performance narrow bore capillary chromatography. In addition to a wide range of general gas chromatography applications, the Narrow Bore Capillary FID GC System is excellent for environmental testing and quality control applications.

The On-Column Programmable Temperature Vaporization (OCPTV) injector allows larger and simpler liquid injections than are otherwise possible with narrow bore columns. Like a traditional heated Split/Splitless injector, the OCPTV has a split vent and needle valve for venting solvent while concentrating sample. Unlike a heated Split/Splitless injector, the OCPTV vents the solvent without rapid vaporization. Carrier gas flow is programmable from the PeakSimple data system.

The OCPTV discriminates in favor of semi-volatile analytes with boiling points higher than C₈. The chromatogram at right shows an analysis of diesel range organics (C₁₀-C₂₈). The OCPTV causes the analytes to focus on the analytical column, resulting in sharp, well-defined peaks.

Traditional heated split injectors can usually only handle 1-2 μ L injections. The OCPTV's ability to accommodate larger (1-20 μ L) injections allows for detection limits an order of magnitude lower. For more information on the OCPTV.


8610-5405
Narrow Bore Capillary FID GC System
USD9,990

(VOLTAGE: for 110VAC, use 8610-5405-1; for 220VAC, use 8610-5405-2)

Options & Upgrades: additional [detectors](#) with [4 channel serial](#) or [6 channel USB](#) PeakSimple data system, [Methanizer](#), [gas sampling valves](#), additional [columns](#), [H₂-50XR](#) [hydrogen generator](#), autosampler

Narrow Bore Capillary FID GC System