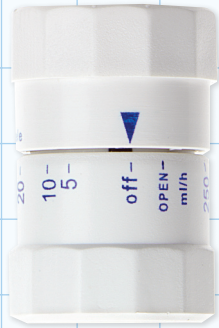




Flow Controllers

Flow Regulators - 5-250 ml/h



21292
3mm I.D. Tubing
Body: ABS
O-Ring: Rubber



Bottom View



12109
4.1mm O.D. Tubing
Body: ABS
O-Ring: Nitrile



17548
4.1mm O.D. Tubing
Body: PC
O-Ring: Silicone

Flow Control Bi-directional Luer Switch

Female Luer Lock Inlet

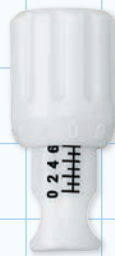


Male Luer Lock Outlet

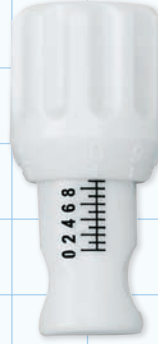
Open Position
Permits Bi-directional
Flow
Slides to Open
or Close
Closed

97337
Up To 1200psi
Body: PC
Slider: Acetal
Collar: ABS
Valve: Silicone

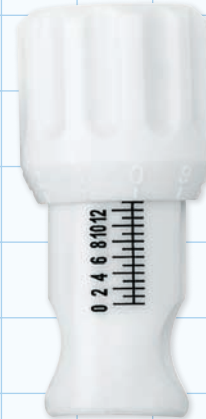
Flow Control Pinch Valves



14043
Fits 5/32"-1/4" O.D. Tubing
(4mm-6.4mm)
Acetal



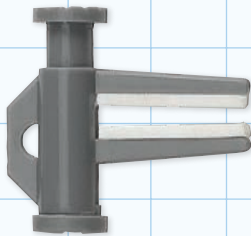
14044
Fits 5/32"-3/8" O.D. Tubing
(4mm-9.5mm)
Acetal



14045
Fits 7/16"-1/2" O.D. Tubing
(11.1mm-12.7mm)
Acetal

Designed for fine adjustment of fluid flow
Valve body indicates tube opening
May be used with thicker walled tubing

Bulldog Clamp



16519
Fits 5/32"-1/4" Tubing
(4mm-6.4mm)
Body: PC
Cover: Silicone
Spring: SS

Parallel clamping jaws are covered with soft silicone rubber
Provides smooth & equal occluding pressure

Snap Action



14052
Fits 3/16" O.D. Tubing
(4.8mm)
Body: PC
Rocker: Nylon
Spring: Steel

Also Available:
14053 - Fits 1/4" O.D. Tubing
(6.4mm)

Screw Clamp



13576
Fits up to 0.275" O.D. Tubing
(7mm)
Body: PP
Cap: HDPE