

CarboBlack Solid Supports

Graphitized carbon black offers unique selectivity and very little adsorption for alcohol analyses. Two types of CarboBlack supports are available, CarboBlack B and CarboBlack C. CarboBlack B support, with its higher surface area, can hold up to a 10% loading of a nonsilicone liquid phase. CarboBlack C support can hold up to a 1% loading of a nonsilicone liquid phase. Many Carbowax® 20M-loaded CarboBlack packings are available. CarboBlack packings are treated with KOH or picric acid for basic or acidic compounds, and special alcoholic beverage loadings are available. CarboBlack supports provide resolution and retention similar to CarboPack™ and CarboGraph™ supports.

also **available**

CarboBlack packing materials. See **page 120**.

On CarboBlack B	Mesh	Stainless Steel Tubing				SilcoSmooth™ Tubing**			
		L (ft.)	OD (in.)	ID (mm)	cat.#*	L (m)	OD (in.)	ID (mm)	cat.#*
5% Carbowax® 20M	80/120	—	—	—	—	2	1/8	2	80105-
5% Carbowax® 20M	60/80	6	1/8	2.1	88012-	1.8	1/8	2	80106-
6.6% Carbowax® 20M	80/120	6	1/8	2.1	80451-	2	1/8	2	80107-
4% Carbowax® 20M/ 0.8% KOH	60/80	—	—	—	—	2	1/8	2	80116-
1% Rt™-1000	60/80	8	1/8	2.1	88013-	2.4	1/8	2	80206-
1% Rt™-1000	60/80	6	1/8	2.1	80452-	2	1/8	2	80207-
3% Rt™-1500	80/120	10	1/8	2.1	80453-	3.05	1/8	2	80211-
1% Rt™-1510	60/80	10	1/8	2.1	80454-	3.05	1/8	2	80216-
1.5% XE-60/1% H ₃ PO ₄	60/80	6	1/8	2.1	80455-	1.8	1/8	2	80305-

On CarboBlack B	Mesh	Nickel 200 Tubing			
		L (m)	OD (in.)	ID (mm)	cat.#*
5% Krytox (Ni 200 tubing)	60/80	3.05	1/8	2.1	80127-

On CarboBlack C	Mesh	Stainless Steel Tubing				SilcoSmooth™ Tubing**			
		L (ft.)	OD (in.)	ID (mm)	cat.#*	L (m)	OD (in.)	ID (mm)	cat.#*
0.2% Carbowax® 1500	60/80	6	1/8	2.1	80456-	2	1/8	2	80121-
0.2% Carbowax® 1500	80/100	6	1/8	2.1	80457-	2	1/8	2	80122-
0.1% Rt™-1000	80/100	6	1/8	2.1	80458-	1.8	1/8	2	80205-
0.19% picric acid	80/100	6	1/8	2.1	80459-	2	1/8	2	80311-
0.3% Carbowax® 20M/0.1% H ₃ PO ₄	60/80	2.5	3/16	3.1	80460-	0.75	3/16	3.1	80111-

Improved Molecular Sieves

Molecular sieve packed columns easily separate permanent gases at above-ambient temperatures. Restek's R&D chemists have developed new processes for preparing molecular sieve packings, which result in excellent batch-to-batch reproducibility. In addition, our molecular sieves are preactivated and ready to use. Each column comes with metal end-fittings to prevent water or carbon dioxide from adsorbing into the packing during shipment.

Molecular Sieve Packed Columns

Molecular Sieve	Mesh	Stainless Steel Tubing				SilcoSmooth™ Tubing**			
		L (ft.)	OD (in.)	ID (mm)	cat.#*	L (m)	OD (in.)	ID (mm)	cat.#*
Molesieve 5A	60/80	6	1/8	2.1	80473-	2	1/8	2	80428-
Molesieve 5A	80/100	3	1/8	2.1	88015-	1	1/8	2	80440-
Molesieve 5A	80/100	6	1/8	2.1	80474-	2	1/8	2	80429-
Molesieve 5A	80/100	10	1/8	2.1	88014-	3.05	1/8	2	80430-
Molesieve 13X	60/80	6	1/8	2.1	80475-	2	1/8	2	80480-
Molesieve 13X	80/100	6	1/8	2.1	80476-	2	1/8	2	80439-

*Please add column instrument configuration suffix number to cat.# when ordering. See chart on this page.

**Siltek®-treated stainless steel.

Column Instrument Configurations



General Configuration
Suffix -800



Agilent
5880, 5890,
5987, 6890:
Suffix -810



Varian 3700,
Vista Series,
FID:
Suffix -820



8 3/4" | PE 900-3920
Sigma 1,2,3:
Suffix -830



6 1/2" | PE Auto System
8300, 8400,
8700 (Not On-
Column):
Suffix -840

See page 129 for custom configurations

Note: Initial 2" of column will be empty, to accommodate a needle. For a completely filled column (not on-column) add suffix -901.

new!

free literature

Resolve Benzene and Toluene
in Spark Ignition Fuels
Containing EthanolDownload your free copy from
www.restek.com

lit. cat.# 580227

D3606 Application Column (2 column set)

- Complete resolution of benzene from ethanol; no compromising coelutions.
- Easy, accurate quantification of aromatics.
- Fully conditioned column set—ready to use out of the box.
- Each set is tested for method applicability and includes chromatogram.

D3606 Application Column (2 column set)**Description****D3606 Application Column (2 column set)****

Column 1: 6' (1.8m), 1/8" OD, 2.0mm ID, nonpolar Rtx®-1

Column 2: 16' (4.9m), 1/8" OD, 2.0mm ID, proprietary packing material

cat.#*

83606-

*Please add column instrument configuration suffix number to cat.# when ordering. See chart on this page.

**This column set is for a valving system; therefore, packing material is filled to ends of columns.

Light Hydrocarbon Analysis

Special columns for unsaturated light hydrocarbons

Special columns for unsaturated light hydrocarbons

- Faster separations of C1 to C4 hydrocarbons.
- Res-Sil™ packing replaces Porasil materials.

***n*-Octane on Res-Sil™ C Packed Column**

This packed column has unique selectivity for resolving unsaturated light hydrocarbons (Figure 1).

OPN on Res-Sil™ C Packed ColumnThis column separates the light hydrocarbons, and resolves *cis*-2-butene from 1,3-butadiene (Figure 2).**2abc Refinery Gas Column Set**

This 3-column set is finely tuned to resolve light hydrocarbons. When used in the proper valving system, it will elute C5+ hydrocarbons ahead of C1 through C4 hydrocarbons.

Description*n*-Octane on Res-Sil™ C, 80/100 (20', 2.0mm ID, 1/8" SilcoSmooth™ OD)

OPN on Res-Sil™ C, 80/100 (12', 2.0mm ID, 1/8" SilcoSmooth™ OD)

2abc Refinery Gas Column Set (3 column set)**

cat.#*

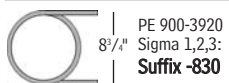
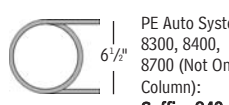
80436-

80437-

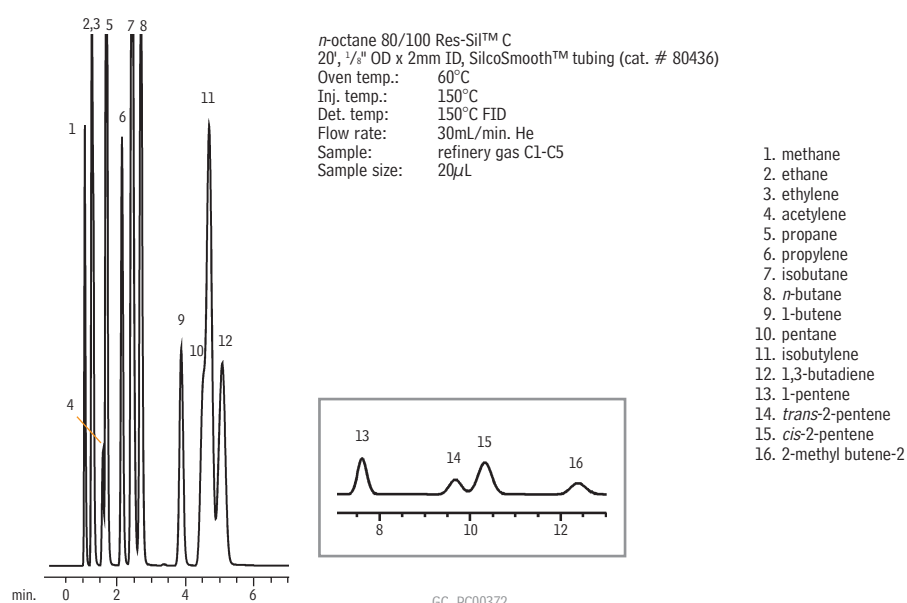
88000-

*Please add column instrument configuration suffix number to cat.# when ordering. See chart on this page.

**This column set is for a valving system; therefore, packing material is filled to ends of columns.

Column Instrument
ConfigurationsGeneral
Configuration
Suffix -800Agilent
5880, 5890,
5987, 6890:
Suffix -810Varian 3700,
Vista Series,
FID:
Suffix -820PE 900-3920
Sigma 1,2,3:
Suffix -830PE Auto System
8300, 8400,
8700 (Not On-
Column):
Suffix -840See page 129 for custom
configurations

Note: Initial 2" of column will be empty, to accommodate a needle. For a completely filled column (not on-column) add suffix -901.

Figure 1 *n*-Octane on Res-Sil™ C packing has unique selectivity for unsaturated light hydrocarbons.

for more info

See page 121 for more
information on Res-Sil™
packing materials.