

## Rt™-XLSulfur Packed/Micropacked Columns

- Optimized columns for low ppbv sulfur analyses.
- Eliminate the need for Teflon® tubing.
- Column and end-fittings are Siltek® treated for maximum inertness.

Sulfur analyses are traditionally performed using Teflon® tubing to improve column inertness. Unfortunately, Teflon® tubing is gas permeable, difficult to pack with high efficiency, prone to shrinkage, and has poor thermal stability. Analyses of ppbv levels of sulfur compounds are possible with the Rt™-XLSulfur column. The packing material for Rt™-XLSulfur columns is extensively deactivated for analysis of low ppbv levels of hydrogen sulfide and methyl mercaptan. It is then treated to achieve effective separation of hydrocarbons from sulfur compounds. The interior wall and the end-fittings of the Rt™-XLSulfur column are Siltek® treated, making the column as inert as Teflon®. The extra care taken with this column ensures more accurate analyses of sulfur compounds.

## Rt™-XLSulfur Packed Columns

OD	ID	1-Meter*	2-Meter*
1/8"	2.0mm	80484-	80485-
3/16"	3.1mm	80482-	80483-

## Rt™-XLSulfur Micropacked Columns\*\*

OD	ID	1-Meter	2-Meter
1/16"	1.0mm	19804	19805
0.95mm	0.75mm	19806	19807

\*Please add column instrument configuration suffix number to cat.# when ordering. See chart on this page.

\*\*Order installation kit separately. See page 119.

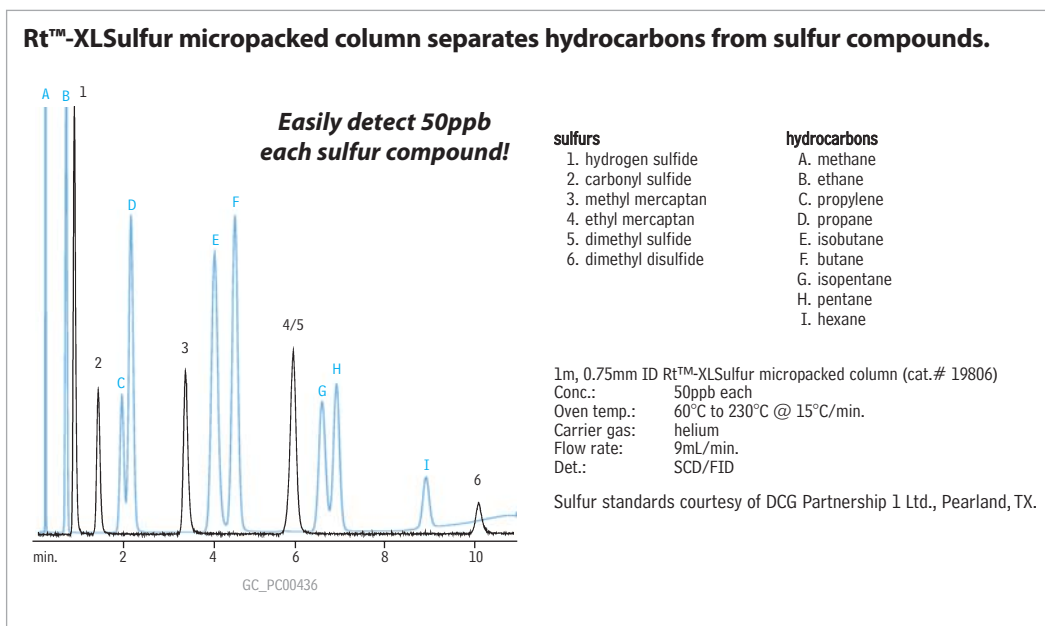
Excellent for Sulfur Analysis

did you know?






Rt™-XLSulfur columns are optimized for low ppb-level sulfur analysis!

also available

For adapter kits for installing packed/micropacked columns, see page 119.



## Column Instrument Configurations

-  General Configuration  
**Suffix -800**
-  Agilent 5880, 5890, 5987, 6890:  
**Suffix -810**
-  Varian 3700, Vista Series, FID:  
**Suffix -820**
-  PE 900-3920 8 3/4"  
Sigma 1,2,3:  
**Suffix -830**
-  PE Auto System 8300, 8400, 8700 (Not On-Column):  
**Suffix -840**

See page 129 for custom configurations

**Note:** Initial 2" of column will be empty, to accommodate a needle. For a completely filled column (not on-column) add suffix -901.