

## Injector Wrench for Agilent 5890/6890/6850 GCs

- Use to remove the septum nut and weldments during GC maintenance.
- High-quality stainless steel construction.
- Meets original equipment performance.



Use the smaller end to remove the septum nut.



Use the larger end to tighten the split/splitless weldment nut.



Description	Similar to Agilent part #	qty.	cat.#
Injector Wrench for Agilent 5890/6890/6850 GCs	19251-00100	ea.	22065

## Rethreading Tool

- Repair worn or damaged threads in injection ports, fittings, etc.
- Built-in guide to prevent cross-threading.



- 1) Worn & damaged threads can allow oxygen into the system—compromising analytical results and destroying columns.
- 2) Screw the tool completely onto the injection port in a clockwise direction. Unscrew the tool and inspect the threads, repeat as necessary. When done, wipe threads with methanol to remove any debris.



Make your injection port threads like new!

Description	qty.	cat.#
Rethreading Tool for 1/4" compression fittings (Agilent split/splitless injection ports)	ea.	23018

## FID/Injector Cleaning Kit

The FID/Injector Cleaning Kit includes:

- Nylon tube brushes (1/8", 3/16", 1/4").
- Pipe cleaner.
- Stainless steel tube brushes (3/8", 3/16", 1/4").
- Stainless steel surface brush.
- Stainless steel jet reamers.
- Emery cloth.

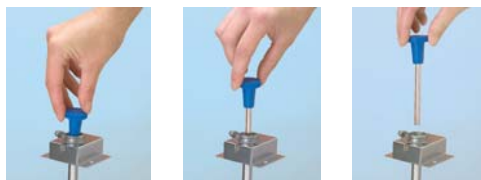


Use Restek's Cleaning Kit with ANY injection port!

Description	qty.	cat.#
FID/Injector Cleaning Kit	kit	20120

## Inlet Liner Removal Tool

- Easily remove liner from injector—no more burned fingers.
- Made from high-temperature silicone.
- Won't chip or crack the liner.



No more burned fingers!

Description	qty.	cat.#
Inlet Liner Removal Tool	3-pk.	20181

## Flashlight with Swivel Head

- Ideal for tight spaces—like inside a GC oven.
- Uses two AA batteries (included).

Description	qty.	cat.#
Flashlight with Swivel Head	ea.	22187



## Injection Port Split/Splitless Weldment Retaining Ring Pliers

- Easily removes snap ring on split/splitless weldment assemblies.
- Use with Agilent 5890/6890/6850 GCs.

Description	qty.	cat.#
Injection Port Split/Splitless Weldment Retaining Ring Pliers	ea.	26186

