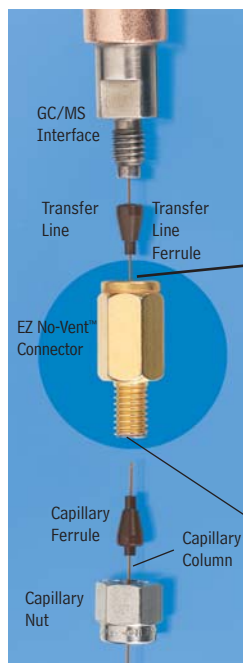


EZ No-Vent™ GC Column-Mass Spectrometer Connector

- Change GC/MS columns in minutes without venting—100µm transfer line throttles vacuum and prevents venting.
- Easy to install and maintain—no special tools or plumbing required.
- Gold-plated body for inertness.
- Deactivated transfer line keeps analytes focused; high-temperature polyimide ferrules eliminate leaks at the problematic transfer line fitting.
- Lower cost than other “no-vent” fittings.
- Available for Agilent GCs with 5971/5972, 5973, or 5975 GC/MS.



Change columns in minutes—without venting!

Kit installs easily, without special tools or plumbing.

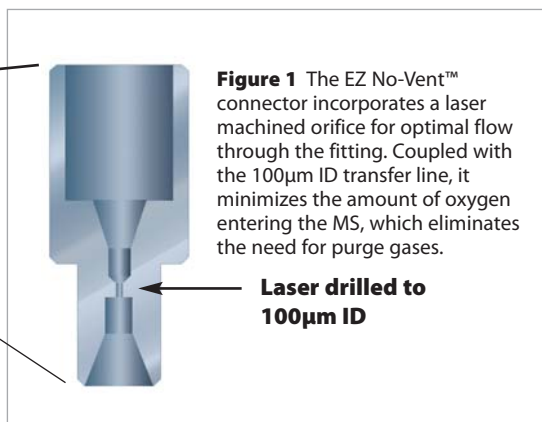


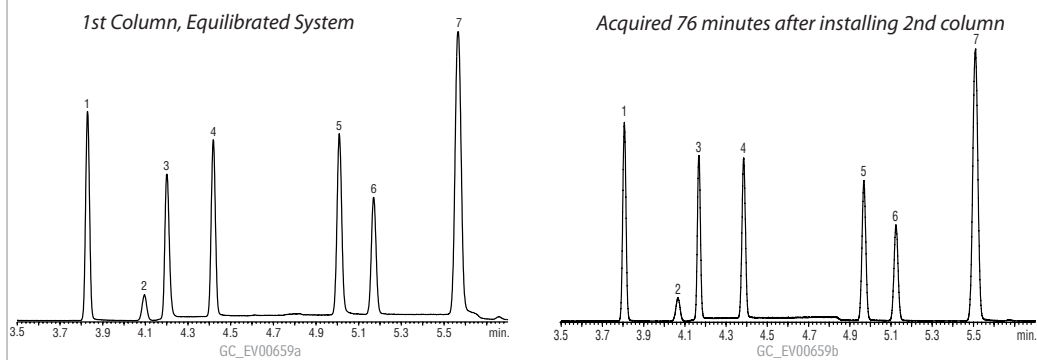
Figure 1 The EZ No-Vent™ connector incorporates a laser machined orifice for optimal flow through the fitting. Coupled with the 100µm ID transfer line, it minimizes the amount of oxygen entering the MS, which eliminates the need for purge gases.

Laser drilled to 100µm ID

We designed the EZ No-Vent™ GC column-mass spectrometer connector to be simple and easy to use.

A critical orifice in the EZ No-Vent™ connector minimizes the amount of oxygen allowed into the MS source, eliminating the need for purge gas and enabling you to skip the lengthy vent and pump-down cycle otherwise required when you make a column change. This can save nearly a day of downtime with each column change. The EZ No-Vent™ connector easily attaches to the MS source without special tools or extra plumbing. Figure 1 shows the internal structure of the connector.

Figure 2 Sharp, symmetric peaks for gases show the EZ No-Vent™ connector does not add dead volume and allows rapid column changes.



Rtx®-624, 60m, 0.25mm ID, 1.4µm (cat# 10969), column direct to source.

Rtx®-624, 60m, 0.25mm ID, 1.4µm (cat# 10969) using EZ No-Vent™.

1. dichlorodifluoromethane
2. 1,2-dichlorotetrafluoroethene (Freon® 114)
3. chloromethane
4. vinyl chloride
5. bromomethane
6. chloroethane
7. trichlorofluoromethane

Sample: Volatile Gas Mix 502.2
Calibration Mix#1 (gases)
cat# 30042
Inj.: Purge & Trap
GC Agilent 6890
Inj. temp.: 300°C
Carrier gas: helium, constant flow
Flow rate: 1.0mL/min.

Oven temp.: 60°C isothermal
Det: Agilent 5973 GC/MS
Transfer line temp.: 280°C
Scan range: 35-550amu
Tune: BFB
Ionization: EI

Description	qty.	cat.#
EZ No-Vent™ Connector Kit for Agilent 5971/5972 and 5973 GC/MS Kit includes: EZ No-Vent™ Connector, two 0.4mm ID ferrules for capillary column, two 0.4mm ID ferrules for transfer line, 100µm deactivated transfer line (3 ft.), column plug, column nut.	kit	21323
Replacement ferrules for connecting capillary column to EZ No-Vent™ Connector:		
0.4mm ID (Polyimide)	2-pk.	21015
0.5mm ID (Polyimide)	2-pk.	21016
Replacement ferrules for connecting transfer line to EZ No-Vent™ Connector: 0.4mm ID	2-pk.	21043
Replacement 100µm deactivated transfer line	3 ft.	21018
Replacement EZ No-Vent™ Column Nut	5-pk.	21900
Replacement EZ No-Vent™ Plug	2-pk.	21915
Open-End Wrenches (1/2" x 5/16")	2-pk.	20110