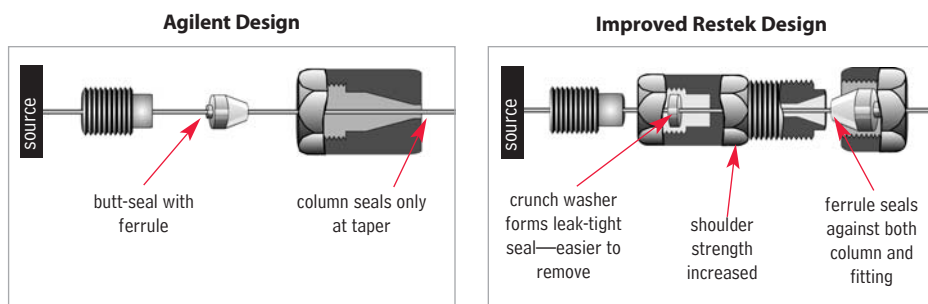


MSD Conversion Fitting

- A flat, soft aluminum sealing ring deforms and butt-seals against the MSD interface.
- A standard Vespel® ferrule seals the column and 1/16-inch stainless steel nut.
- Fitting is constructed of nickel-plated brass for longevity and softness.
- Use any standard Vespel® or Vespel®/graphite 1/16-inch ferrule.
- Includes a 1/16-inch stainless steel nut and two replacement sealing rings. Order ferrules separately.



Agilent's MSD interface uses a butt-seal to simultaneously seal the MSD source to the capillary column. This system is prone to leakage. Restek's MSD conversion fitting is designed with two separate seals to reduce the chance of leaks: a crunch washer seals the MSD conversion fitting to the source; a ferrule seals the capillary tubing to the conversion fitting.



Description	qty.	cat.#
MSD Conversion Fitting	ea.	21314
Replacement Ring Seal for MSD Conversion Fitting	2-pk.	21313

MSD Source Nut

- 1.2mm nut bore permits easy removal of ferrules with a standard tapered-needle file (cat.# 20106).
- Made of brass to prevent thread-stripping on the transfer line.
- Improved design enhances ease of threading onto the transfer line and improves overall lifetime.

Improved design!



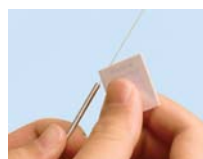
Description	Similar to Agilent part #	qty.	cat.#
(Detector) MSD Source Nut	05988-20066	2-pk.	20643

Capillary Installation Gauge for Agilent 5973/5975 MS

- Seats ferrules onto column for consistent installations.
- Made from high-quality stainless steel.



Install the nut and ferrule onto the column, then insert the column through the installation tool, exposing several centimeters at the exit end. Tighten the nut.



Score and remove the exposed end of the column, then loosen the nut.



The ferrule will be properly seated and should remain in place when light force is applied. Install the column into the GC/MS interface.



Tom Kane
Product Development Manager

Description	Similar to Agilent part #	qty.	cat.#
Capillary Installation Gauge for Agilent 5973/5975 MS	G1099-20030	ea.	21894

Gold Tip Transfer Line

- For use with Agilent 5971/5972 MS Systems.
- Gold-plated for inertness.
- Meets or exceeds manufacturer's performance.



Description	Similar to Agilent part #	qty.	cat.#
Gold Tip Transfer Line	05971-20305	ea.	24699