



Patent pending.

Secure, reliable
column-to-column
connections!

Vu2 Union™ Connectors

- Connect a guard column to an analytical column.
- Connect a column to a transfer line.
- Connect two columns in series.
- Repair a broken column.

Restek's Vu2 Union™ connector combines the simplicity of a Press-Tight® union with the strength of a metal union. The Vu2 Union™ connector reliably couples one analytical column to another, or to a transfer line or guard column. The columns cannot unexpectedly disconnect, even at temperatures as high as 400°C.

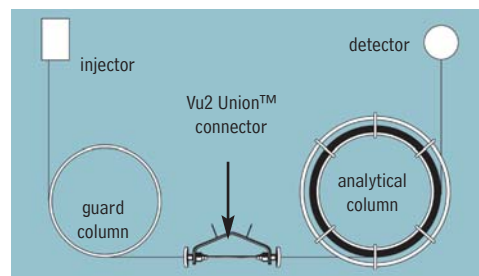
How does a Vu2 Union™ connector work?

A Press-Tight® union in the Vu2 Union™ connector joins the fused silica ends together; the ferrule and knurled nut at each end of the connector hold the tubing in place via a secondary seal between the ferrule and the Press-Tight® union. Each knurled nut applies independent pressure to each ferrule, to make a leak-tight seal with the column end. These ultra-strong connections will not unexpectedly disconnect under temperature changes, vibrations, or other stresses normally encountered in GC analyses. The open design allows visual confirmation of the seal between the column and the Press-Tight® union, to ensure confidence in the connection. Hang the connector from the column cage, to minimize stress on the connections.

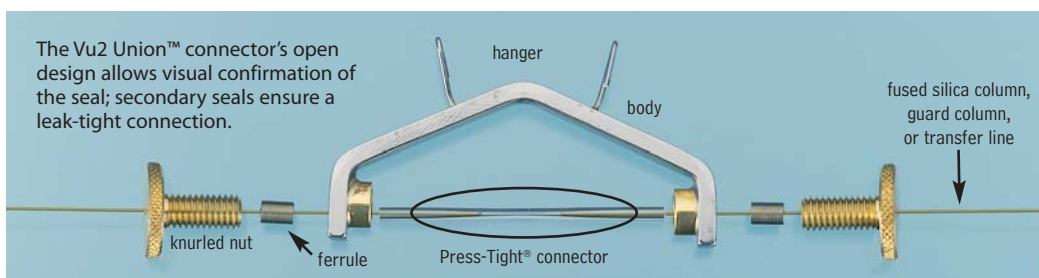
Who will benefit from using Vu2 Union™ connectors?

Any analyst using guard columns, transfer lines, or restrictor tubing, performing a dual-column analysis with columns connected in series, or seeking to repair a broken column will find Vu2 Union™ connectors the simple, reliable, easy-to-use solution to their connection needs.

A guard column connected to an analytical column by a Vu2 Union™ connector.



NOTE: This product is not recommended for GC column-to-MS connections—use the Vacuum Vu-Union® (page 224).



Kits include: Vu2 Union™ body, 2 knurled nuts, 2 Press-Tight® unions, and 4 ferrules

Description	Ferrules Fit Column ID	qty.	cat.#
Vu2 Union™ Connector Kit	0.10/0.15mm	kit	22220
Vu2 Union™ Connector Kit	0.18/0.28mm	kit	21105
Vu2 Union™ Connector Kit	0.32mm	kit	21106
Vu2 Union™ Connector Kit	0.45/0.53mm	kit	21107
Knurled nut		2-pk.	21108

Universal Press-Tight® Connectors

Description	5-pk.	25-pk.	100-pk.
Universal Press-Tight® Connectors	20400	20401	20402
Deactivated, Universal Press-Tight® Connectors	20429	20430	20431
Siltek® Treated Universal Press-Tight® Connectors	20480	20449	20481

Graphite Ferrules for Vu2 Union™ Connectors

- High-purity, high-density graphite.
- Stable to 450°C.
- No binders that can off-gas or adsorb analytes.
- Smooth surface and clean edges.



Ferrule ID	Fits Column ID	Graphite 2-pk.	Graphite 10-pk.
0.3mm	0.10/0.15mm	22221	22222
0.4mm	0.18/0.28mm	20280	20281
0.5mm	0.32mm	20282	20283
0.8mm	0.45/0.53mm	20284	20285

restek
innovation!

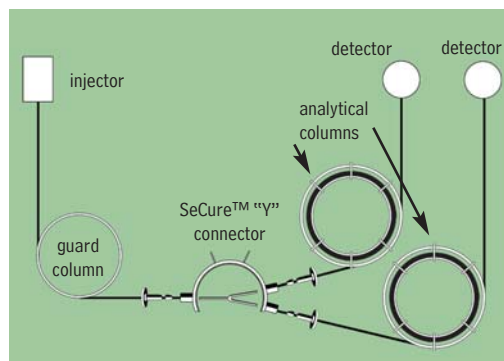
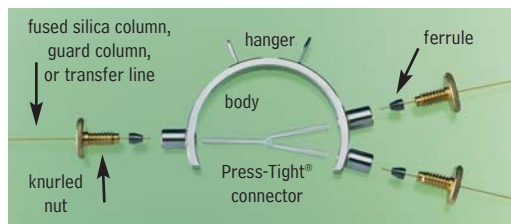
SeCure™ "Y" Connector Kits

- Connect two analytical columns to a transfer line or guard column.
- Use standard "Y" Press-Tight® connectors and 1/16" graphite ferrules.
- Reliable seal integrity, will not unexpectedly disconnect during temperature-programmed analyses.
- Open design allows visual confirmation of the seal for added confidence in the connection.

Combine the simplicity of a "Y" Press-Tight® connector with the strength of a metal union. The ferrules and knurled nuts hold the fused silica tubing in place, which prevents the tubing from unexpectedly disconnecting, even at temperatures as high as 400°C.

The SeCure™ "Y" Connector's open design allows visual confirmation of the seal.

Dual-column confirmational analysis with a single injection—one of the SeCure™ "Y" connector's many uses.



Patent pending.

Secure, reliable column-to-column connections!

Kits include: SeCure™ "Y" connector body, 3 knurled nuts, "Y" Universal Press-Tight® union, 3 ferrules.

Description	Ferrules Fit Column ID	qty.	cat.#
SeCure™ "Y" Connector Kit	0.18/0.25/0.28mm	kit	20276
SeCure™ "Y" Connector Kit	0.32mm	kit	20277
SeCure™ "Y" Connector Kit	0.45/0.53mm	kit	20278
Knurled nut		3-pk.	20279

a plus 1 story

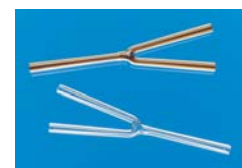
"Restek is a great corp. that keeps us operating on a daily basis with your GC supplies. We really love the new SeCure™ "Y" Connector. It has worked wonders for us."

Eric A. Lorge, Project Manager, Major Equipment Manufacturer, Environmental Lab

Universal "Y" Press-Tight® Connectors

- Split sample flow onto two columns.
- Split a single column flow to two detectors—perform confirmation analysis with a single injection.
- Deactivated Press-Tight® connectors assure better recovery of polar and non-polar compounds.
- Siltek® treated connectors are ideal for organochlorine pesticides analysis.
- Fit column ODs from 0.33–0.74mm (Restek 0.1mm–0.53mm ID).

Description	ea.	3-pk.
Universal "Y" Press-Tight® Connector	20405	20406
Deactivated Universal "Y" Press-Tight® Connector	20405-261	20406-261
Siltek® Treated Universal "Y" Press-Tight® Connector	20485	20486



Graphite Ferrules for SeCure™ "Y" Connectors

- Preconditioned to minimize out-gassing.
- High-purity, high-density graphite.
- Stable to 450°C.
- No binders that can off-gas or adsorb analytes.
- Smooth surface and clean edges.

Ferrule ID	Fits Column ID	Graphite 10-pk.	Graphite 50-pk.
0.4mm	0.18/0.25/0.28mm	20200	20227
0.5mm	0.32mm	20201	20228
0.8mm	0.45/0.53mm	20202	20224



Vacuum Vu-Union® & Gerstel GRAPHPAK® Connectors



Vacuum Vu-Union® Connector for GC/MS Applications

- Connects analytical column to MS transfer line.
- Use under vacuum conditions.
- Use only with Vu-Union® Vespel®/graphite ferrules—order ferrules separately.
- Includes metal housing body, one deactivated tapered glass insert, and Vu-Union® Helping Hand.
- Fits column ODs from 0.33–0.74mm (Restek 0.1mm–0.53mm ID).

A specifically designed Vu-Union® glass insert permits more torque to be applied to the ferrules without fear of cracking the insert. The hex end nuts enable you to use wrenches to tighten the end fittings.



Kim Holliday
Southwest/Mountain
States Sales
Representative
16+ years of service!

Description	qty.	cat.#
Vacuum Vu-Union® Connector (with the Helping Hand)	ea.	20427
Replacement Inserts	3-pk.	20428

Vu-Union® Helping Hand

The Helping Hand is designed to hold in place the metal housing of the Vacuum Vu-Union® connector. This allows you to easily assemble the columns in the glass insert and tighten the nuts. The Helping Hand is included with the Vacuum Vu-Union® connector.



Vu-Union® Vespel®/Graphite Ferrules

- Use with Vacuum Vu-Union® connectors.
- 60% Vespel®/40% graphite.
- 400°C maximum operating temperature.



Ferrule ID	Fits Column	qty.	cat.#
0.3mm	< 0.22mm ID/ < 0.4mm OD	10-pk.	20423
0.4mm	0.25mm ID/0.4mm OD	10-pk.	20420
0.5mm	0.32mm ID/0.5mm OD	10-pk.	20421
0.8mm	0.45/0.53mm ID/0.8mm OD	10-pk.	20422

Gerstel GRAPHPACK® 3D/2 Connectors

GRAPHPACK® technology provides a complete system that quickly and reliably makes a leak-tight, low-dead-volume connection. The central component is a metal-jacketed graphite ferrule—the ideal seal for GC applications.



Description	qty.	cat.#
GRAPHPACK® 3D/2 Connector* (0.25mm to 0.32mm ID)	ea.	20272
GRAPHPACK® 3D/2 Connector* (0.45mm to 0.7mm ID)	ea.	20273

*Use only with GRAPHPACK® 3D/2 ferrules.

GRAPHPACK® 3D/2 Ferrules



Ferrule ID	Fits Column ID	qty.	cat.#
0.4mm	0.25mm	10-pk.	20271
0.5mm	0.32mm	10-pk.	20270
0.8mm	0.45/0.53mm	10-pk.	20274

MXT™-Union Connector Kits for Fused Silica Columns

- Low-dead-volume, leak-tight connection.
- Reusable.
- Siltek® treatment ensures maximum inertness.
- Ideal for connecting a guard column or transfer line to an analytical column.
- Use to oven temperatures of 350°C.
- Available in union and “Y” configurations.

These MXT™ connectors can be used with fused silica tubing, because of a Valcon polyimide 1/32-inch one-piece fused silica adaptor. This unique graphite-reinforced composite allows a capillary column to slide into the adaptor and be locked in place simply by loosening and tightening the fitting.

please note

Use for fused silica-to-fused silica or fused silica-to-metal connections.

SILTEK®
treated

MXT™-Union Connector Kits for Fused Silica Columns

Each kit contains the MXT™ union, two 1/32-inch nuts and two one-piece fused silica adaptors.

Description	qty.	cat.#
For 0.25mm ID Fused Silica Columns	kit	21386
For 0.32mm ID Fused Silica Columns	kit	21385
For 0.53mm ID Fused Silica Columns	kit	21384

MXT™ “Y”-Union Connector Kits for Fused Silica Columns

Each kit contains the MXT™ union, three 1/32-inch nuts and three one-piece fused silica adaptors.

Description	qty.	cat.#
For 0.25mm ID Fused Silica Columns	kit	21389
For 0.32mm ID Fused Silica Columns	kit	21388
For 0.53mm ID Fused Silica Columns	kit	21387

1/32-Inch Replacement Nut

Description	qty.	cat.#
1/32" Replacement Nut	5-pk.	20389



Valco® Connectors—One-Piece Valcon Polyimide Adaptor Ferrule for Fused Silica

Restek recommends a one-piece adaptor ferrule for use in fittings in which the ferrule will not be removed. Connections are made or broken by tightening or loosening the fitting nut and sliding the tubing in or out. Fused silica adaptor ferrules are Valcon polyimide, a unique graphite-reinforced composite, specially prepared to maximize mechanical stability at temperatures to 350°C. The determining factor for selecting adaptor ferrule size is the fused silica tubing OD.

1/32-Inch Adaptor Ferrule (Valcon Polyimide)

Tubing OD	Tubing ID	Valco® #	qty.	cat.#
0.25 ≤ 0.40mm	0.25mm	FS.4-5	5-pk.	20137
0.40 ≤ 0.50mm	0.32mm	FS.5-5	5-pk.	20140
0.50 ≤ 0.80mm	0.53mm	ZF.5V-5	5-pk.	20141
1/32" Replacement Nut			5-pk.	20389



Ferrule



Replacement Nut

Ferrule Removal Kit

The tapered tools in this kit have teeth designed to grip and remove fused silica adaptor ferrules that have become stuck in the fitting detail. Each kit has two tools: one for removing 1/32-inch adaptor ferrules and one for removing 1/16-inch adaptor ferrules.



Description	Valco® #	qty.	cat.#
Ferrule Removal Kit	FRKL	kit	20146

MXT™ Connectors for Metal Tubing

please note

Use for metal-to-metal connections.

SILTEK®
treated



MXT™ Low-Dead-Volume Connector Kits for Metal Columns

These low-dead-volume connectors are Siltek® treated and are deactivated to make them inert to active compounds, just like our MXT® columns. They can be used at temperatures up to 400°C without degrading the deactivated layer. Purchase the appropriate ferrules for connecting 0.28 or 0.53mm ID tubing.

MXT™ Low-Dead-Volume Connector Kits for Metal Columns

- Connect a guard column/transfer line to an MXT® stainless steel column.
- Low thermal mass tracks rapid oven temperature programming.

Each kit contains the MXT™ union, two 1/32-inch ferrules and nuts.

Description	qty.	cat.#
For 0.28mm ID MXT® Columns	kit	20397
For 0.53mm ID MXT® Columns	kit	20394

MXT™ Low-Dead-Volume “Y” Connector Kits for Metal Columns

- Connect two MXT® columns to one inlet or one MXT® column to two detectors.

Each kit contains the MXT™ union, three 1/32-inch ferrules and nuts.

Description	qty.	cat.#
For 0.28mm ID MXT® Columns	kit	20396
For 0.53mm ID MXT® Columns	kit	20395

1/32-Inch Stainless Steel Replacement Ferrules for MXT™ Connectors

Ferrule ID	Fits Column ID	qty.	cat.#
0.59mm	0.28mm	10-pk.	20398
0.79mm	0.53mm	10-pk.	20399

1/32-Inch Replacement Nut

Description	qty.	cat.#
1/32" Replacement Nut	5-pk.	20389

1/4-Inch–3/16-Inch Open-End Wrenches

High-quality miniature wrenches to use with MXT™ low-dead-volume connectors.

Description	qty.	cat.#
1/4"-3/16" Open-End Wrenches	2-piece set	20388

tech tip

Coupling GC Columns

An MXT™ connector is a good alternative to a glass connector when coupling GC columns. This connector is constructed from stainless steel and will not break; it uses ferrules for sealing. The design ensures low dead volume, and Siltek® treatment ensures the MXT™ connector is inert—both features help minimize peak tailing. MXT™ connectors can be used to connect metal-to-metal, metal-to-fused silica, or fused silica-to-fused silica tubing. When connecting metal tubing, use 1/32-inch stainless steel ferrules (listed above); for fused silica tubing, use Valcon polyimide adaptor ferrules (see page 225).