

Pinnacle™ II Biphenyl Columns (USP L11)

Physical Characteristics:

particle size: 5µm, spherical
pore size: 110Å

endcap: yes
pH range: 2.5 to 7.5
temperature limit: 80°C



Chromatographic Properties:

The Pinnacle™ II Biphenyl phase offers alternate selectivity to straight-chain hydrocarbon phases, and enhanced selectivity and retention for unsaturated compounds, compared to traditional phenyl phases. An excellent confirmation column for explosive compounds, as in EPA method 8330.

Application	Page #
Explosives	317, 529

Length	4.6mm ID cat.#
5µm Column	
150mm	9209565
250mm	9209575

Explosives by US EPA Method 8330B on a Pinnacle™ II Biphenyl column.

Sample: 50µg/mL each compound diluted in acetonitrile
8330 Calibration Mix #1 (cat.# 31450)
8330 Calibration Mix #2 (cat.# 31451)
PETN Standard (cat.# 31600)
3,5-dinitroaniline Reference Mix (cat.# 31661)
Nitroglycerin Reference Mix (cat.# 31498)

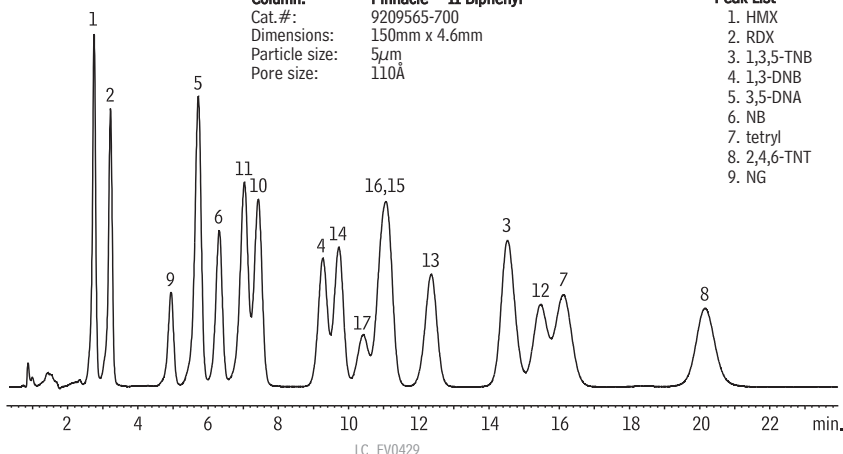
Inj.: 10µL

Conditions:
Mobile phase: water:methanol (44:55 v/v)
Flow: 1.2mL/min.
Temp.: 30°C
Det.: UV detection @ 210nm

Column: Pinnacle™ II Biphenyl
Cat.#: 9209565-700
Dimensions: 150mm x 4.6mm
Particle size: 5µm
Pore size: 110Å

Peak List

1. HMX	10. 2-A-4,6-DNT
2. RDX	11. 4-A-2,6-DNT
3. 1,3,5-TNB	12. 2,4-DNT
4. 1,3-DNB	13. 2,6-DNT
5. 3,5-DNA	14. 2-NT
6. NB	15. 4-NT
7. tetryl	16. 3-NT
8. 2,4,6-TNT	17. PETN
9. NG	



Pinnacle™ II Silica Columns (USP L3)

Physical Characteristics:

particle size: 3µm or 5µm, spherical
pore size: 110Å
carbon load: none

endcap: no
pH range: 2.5 to 10
temperature limit: 80°C



Chromatographic Properties:

Good general purpose packing for normal phase separations. Moderate surface area. Replaces Hypersil® and Pinnacle™ Silica.

Application	Page #
Hydrocodone Bitartrate	545
Tocopherols	536

Length	1.0mm ID	2.1mm ID	3.2mm ID	4.6mm ID
	cat.#	cat.#	cat.#	cat.#
3µm Columns				
30mm	9210331	9210332	9210333	9210335
50mm	9210351	9210352	9210353	9210355
100mm	9210311	9210312	9210313	9210315
5µm Columns				
30mm	9210531	9210532	9210533	9210535
50mm	9210551	9210552	9210553	9210555
100mm	9210511	9210512	9210513	9210515
150mm	9210561	9210562	9210563	9210565
200mm	9210521	9210522	9210523	9210525
250mm	9210571	9210572	9210573	9210575