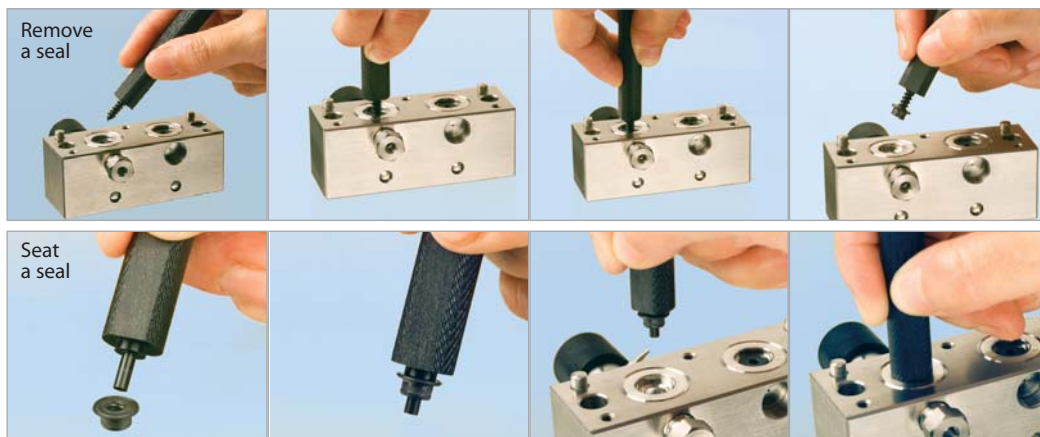




### HPLC Piston Seal Insertion Tool

Simplify pump maintenance: use one end to remove your old seal, then simply slip your new seal on the other end and push it flush into position. The tool cannot mar the surrounding metal surface of the pump housing.



Use the flat side of the Piston Seal Insertion Tool to seat a Waters face seal.

Description	qty.	cat.#
HPLC Piston Seal Insertion Tool	ea.	21356

### Secure-Fit Fittings

A good connection between HPLC components is necessary for trouble-free chromatography. Secure-Fit connectors from Restek and Selerity Technologies ensure a consistent, leak-free seal—and they eliminate excess dead volume! An internal spring mechanism holds the capillary tubing at the proper depth in the female fitting. This seal is maintained while you finger-tighten the nut. These fittings are available in stainless steel or PEEK™, and in a variety of tubing lengths and internal diameters.



Stainless Steel  
Secure-Fit Fitting

#### Secure-Fit Fittings—Single Connectors

Length	Stainless Steel			PEEK™		
	0.005" ID	0.007" ID	0.010" ID	0.005" ID	0.007" ID	0.010" ID
6cm	25181	25185	25190	25230	25234	25217
10cm	25182	25186	25191	25231	25235	25218
20cm	25183	25187	25192	25232	25236	25219
30cm	25184	25188	25193	25233	25237	25220
50cm	26510	26511	26512	—	—	—

#### Secure-Fit Fittings—Two Connectors

Length	Stainless Steel			PEEK™		
	0.005" ID	0.007" ID	0.010" ID	0.005" ID	0.007" ID	0.010" ID
10cm	25208	25211	25214	25221	25224	25227
20cm	25209	25212	25215	25222	25225	25228
30cm	25210	25213	25216	25223	25226	25229
50cm	26513	26514	26515	—	—	—



PEEK™  
Secure-Fit Fitting—Single Connector