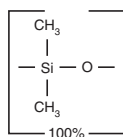


Rxi®-1ms
Structure

Rxi®-1ms (nonpolar phase, Crossbond® 100% dimethyl polysiloxane)

- General purpose columns for drugs of abuse, essential oils, hydrocarbons, pesticides, PCB congeners or (e.g.) Aroclor mixes, sulfur compounds, amines, solvent impurities, simulated distillation, oxygenates, gasoline range organics (GRO), refinery gases.
- Ultra-low bleed—improved signal-to-noise ratio, for better sensitivity and mass spectral integrity.
- Temperature range: -60°C to 330/350°C (bleed tested temperature/maximum operating temperature).
- Equivalent to USP G2 phase.

Rxi®-1ms Columns (fused silica)

(Crossbond® 100% dimethyl polysiloxane)

ID	df (µm)	temp. limits	15-Meter	30-Meter	60-Meter
0.25mm	0.25	-60 to 330/350°C	13320	13323	13326
	0.50	-60 to 330/350°C	13335	13338	13341
	1.00	-60 to 330/350°C	13350	13353	13356
0.32mm	0.25	-60 to 330/350°C	13321	13324	13327
	0.50	-60 to 330/350°C	13336	13339	13342
	1.00	-60 to 330/350°C	13351	13354	13357
0.53mm	0.50	-60 to 330/350°C	13337	13340	
	1.00	-60 to 330/350°C	13352	13355	
	1.50	-60 to 330/350°C	13367	13370	13373

ID	df (µm)	temp. limits	12-Meter	20-Meter	25-Meter	50-Meter
0.18mm	0.18	-60 to 330/350°C		13302		
0.20mm	0.33	-60 to 330/350°C	13397		13398	13399

similar phases

DB-1, DB-1ms, HP-1, HP-1ms, Ultra-1, SPB-1, Equity-1, VF-1ms, CP-Sil 5 CB Low Bleed/MS

free literature

Rxi®-1ms: The Ultimate High Performance Fused Silica Capillary Column

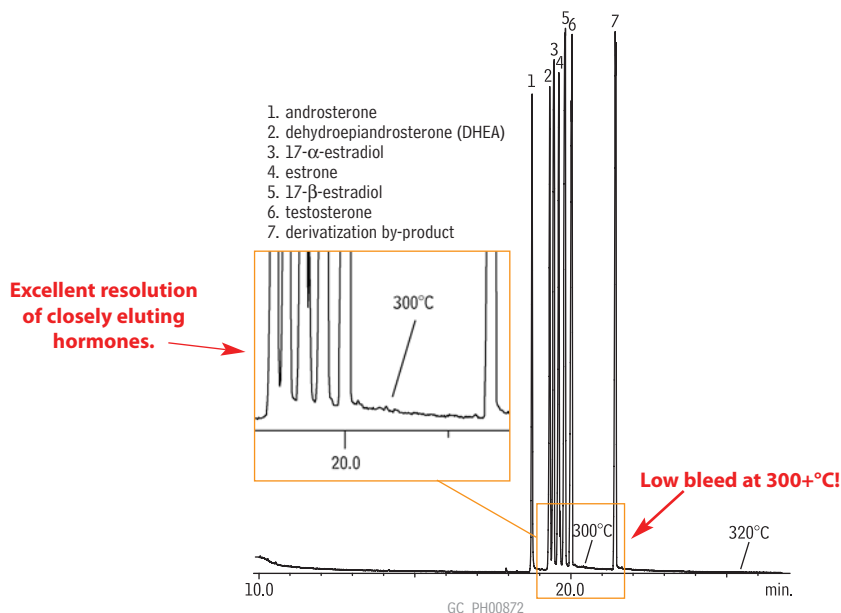
Download your free copy from www.restek.com.

Flyer
lit. cat.# 580075B



Rob Freeman
Innovations Chemist
1+ year of service!

Steroids: Hormones on an Rxi®-1ms column.



Column: Rxi®-1ms, 30m, 0.25mm ID, 0.25µm (cat.# 13323)
Sample: 100µg/mL each hormone in methanol or ethanol; compounds derivatized using 2% methoxyamine HCl (CH₃ONH₂) in pyridine, then N-trimethylsilylimidazole (TMSI), then analyzed 1.0µL splitless (hold 0.5 min.), 3.5mm single gooseneck inlet liner (cat.# 20961)
Inj.: 250°C
Inj. temp.: 250°C
Carrier gas: helium, constant flow
Flow rate: 1mL/min.
Oven temp.: 100°C to 320°C @ 10°C/min. (hold 10 min.)
Det: MS: Shimadzu 17A with QP5000
Transfer line temp.: 280°C
Scan range: 40-700amu
Ionization: EI
Mode: scan