

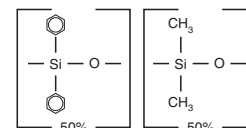
Rxi®-17 (midpolarity phase; Crossbond® 50% diphenyl/50% dimethyl polysiloxane)

- General purpose columns for pesticides, herbicides, rosin acids, phthalate esters, triglycerides, sterols.
- Temperature range: 0°C to 320°C.

Rxi®-17 Columns (fused silica)

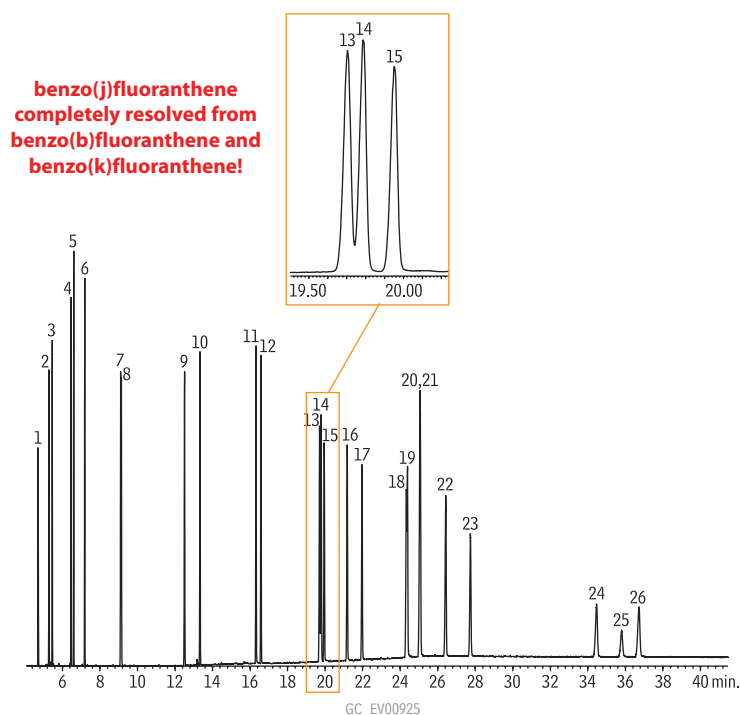
(Crossbond® 50% diphenyl/50% dimethyl polysiloxane)

ID	df (µm)	temp. limits	15-Meter	30-Meter
0.25mm	0.25	40 to 280/320°C	13520	13523
	0.50	40 to 280/320°C	13535	13538
	1.00	40 to 280/320°C	13550	13553
0.32mm	0.25	40 to 280/320°C	13521	13524
	0.50	40 to 280/320°C	13536	13539
	1.00	40 to 280/320°C	13551	13554
0.53mm	0.25	40 to 280/320°C	13522	13525
	0.50	40 to 280/300°C	13537	13540
	0.83	40 to 280/320°C		13569
	1.00	40 to 280/320°C	13552	13555
	1.50	40 to 280/320°C	13567	13570

Rxi®-17 Structure

similar phases

DB-17, DB-608, VF-17ms, CP-Sil 24 CB

Polycyclic aromatic hydrocarbons on an Rxi®-17 column.

Peak List	Ret. Time (min.)
1. naphthalene	4.70
2. 1-methylnaphthalene	5.28
3. 2-methylnaphthalene	5.46
4. acenaphthylene	6.45
5. acenaphthene	6.60
6. fluorene	7.18
7. phenanthrene	9.10
8. anthracene	9.14
9. fluoranthene	12.50
10. pyrene	13.33
11. benzo(a)anthracene	16.32
12. chrysene	16.58
13. benzo(b)fluoranthene	19.70
14. benzo(k)fluoranthene	19.78
15. benzo(j)fluoranthene	19.95
16. benzo(a)pyrene	21.17
17. 3-methylcholanthrene	21.97
18. dibenzo(a,h)acridine	24.33
19. dibenzo(a,i)acridine	24.39
20. indeno(1,2,3-cd)pyrene	25.04
21. dibenzo(a,h)anthracene	25.07
22. benzo(ghi)perylene	26.43
23. 7H-dibenzo(c,g)carbazole	27.75
24. dibenzo(a,e)pyrene	34.46
25. dibenzo(a,i)pyrene	35.80
26. dibenzo(a,h)pyrene	36.73



Christine Vargo
Director of Sales
20+ years of service!

Column: Rxi®-17, 30m, 0.25mm ID, 0.25µm (cat.# 13523)
 Sample: PAH mix, 20µg/mL each component:
 EPA Method 610 Mix (cat.# 31011)
 PAH Supplement Mix (cat.# 31857)
 1-methylnaphthalene (cat.# 31283)
 2-methylnaphthalene (cat.# 31285)
 Inj.: 1.0µL pulsed splitless injection (20ng each component on column),
 4mm Drilled Uniliner® inlet liner with hole near top (cat.# 21055);
 pulse: 20psi @ 0.3 min., 40mL/min. @ 0.2 min.
 Inj. temp.: 300°C
 Carrier gas: helium, constant flow
 Flow rate: 1.2mL/min.
 Oven temp.: 90°C (hold 1.0 min.) to 215°C @ 25°C/min. (hold 0.5 min.) to
 235°C @ 4°C/min., to 280°C @ 15°C/min., to 320°C @
 4°C/min. (hold 20 min.)
 Det.: Agilent 5973 GC/MS
 Scan range: 50-550amu
 Solvent delay: 4.0 min.
 Tune: DFTPP
 Ionization: EI