

LC_0136

Peak List:

1. cytosine
2. 5-methylcytosine
3. uracil
4. uric acid
5. hypoxanthine
6. xanthine
7. thymine
8. purine
9. theobromine
10. ethyluracil
11. 6-methylpurine
12. 1,7-dimethylxanthine
13. theophylline
14. propyluracil

Sample:

Inj.: 10 μ L
 Conc.: 100 μ g/mL each
 Solvent: mobile phase

Column: Ultra PFP

Cat.#: 9176575
 Dimensions: 250mm x 4.6mm
 Particle size: 5 μ m
 Pore size: 100Å

Conditions:

Mobile phase: 0.001% formic acid in water:
 methanol (50:50, v/v)
 Flow: 1.0mL/min.
 Temp.: ambient
 Det.: UV @ 260nm

Aromatic Amino Acids on Ultra Aqueous C18

Peak List: Conc. (mg/mL)

1. tyrosine 0.2
2. phenylalanine 1.6
3. tryptophan 0.4

Sample:

Inj.: 20 μ L
 Solvent: mobile phase A

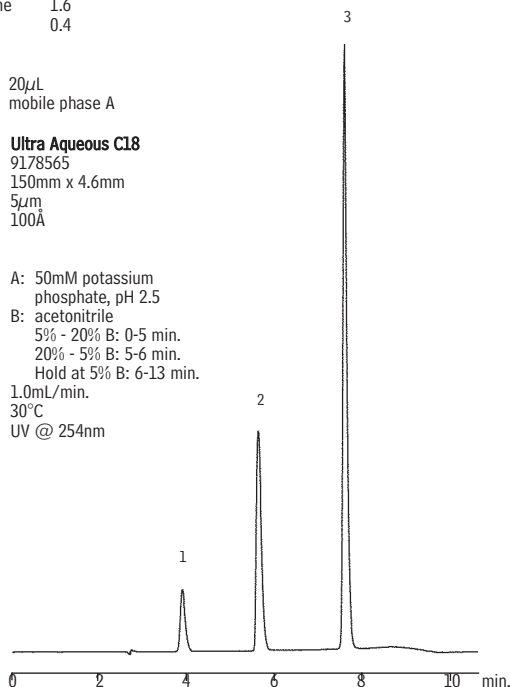
Column: Ultra Aqueous C18

Cat.#: 9178565
 Dimensions: 150mm x 4.6mm
 Particle size: 5 μ m
 Pore size: 100Å

Conditions:

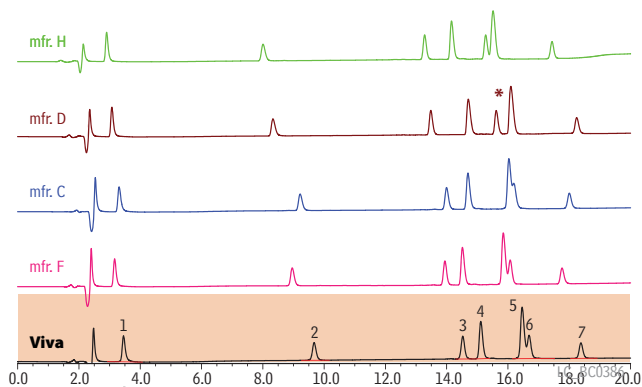
Mobile phases:
 A: 50mM potassium phosphate, pH 2.5
 B: acetonitrile
 5% - 20% B: 0-5 min.
 20% - 5% B: 5-6 min.
 Hold at 5% B: 6-13 min.

Flow: 1.0mL/min.
 Temp.: 30°C
 Det.: UV @ 254nm



Peptide Mix on Viva C18

1. val-tyr
2. val-tyr-val
3. meth enkephalin
4. val-4-angiotensin III
5. angiotensin II, III
6. leucine enkephalin
7. angiotensin I



Sample:

Inj.: 20 μ L peptide test mix

Column: Viva C18 Wide Pore

Cat.#: 9514562
 Dimensions: 150mm x 2.1mm
 Particle size: 5 μ m
 Pore size: 300Å

Conditions:

Mobile phase: A - 0.08% trifluoroacetic acid in water (pH 2.0)
 B - 0.08% TFA in acetonitrile, 10% B to 40% B in 20 min.

Flow: 0.2mL/min.
 Det.: UV @ 214nm

* High levels of trace metals (~100ppm) in the silica enhance this separation.