

a plus 1 story

"For many years, I have searched the market place for a bonded polar GC phase that delivered the chemical inertness, long-term phase stability and practical robustness necessary to meet my operational requirements. Only after an extensive nine month in-house testing programme, can I say that I have finally found that phase in Rtx[®]-Wax."

Steve Rowlands, Quest International (Kent UK)

similar phases

DB-WAX, HP-Wax

Rtx[®]-Wax (polar phase; Crossbond[®] Carbowax[®] polyethylene glycol)

- General purpose columns for FAMES, solvents, BTEX aromatics, flavor compounds, alcohols.
- Temperature range: 20°C to 250°C.
- Equivalent to USP G14, G15, G16, G20, G39 phases.

Rtx[®]-Wax columns are the most inert and efficient PEG columns currently available. The extended operating temperature range allows analysis of compounds having a wide volatility range, and ensures low bleed at temperatures as high as 250°C. Selectivity is comparable to other Carbowax[®] columns, for compounds of intermediate to high polarity. Selectivity data available on request.

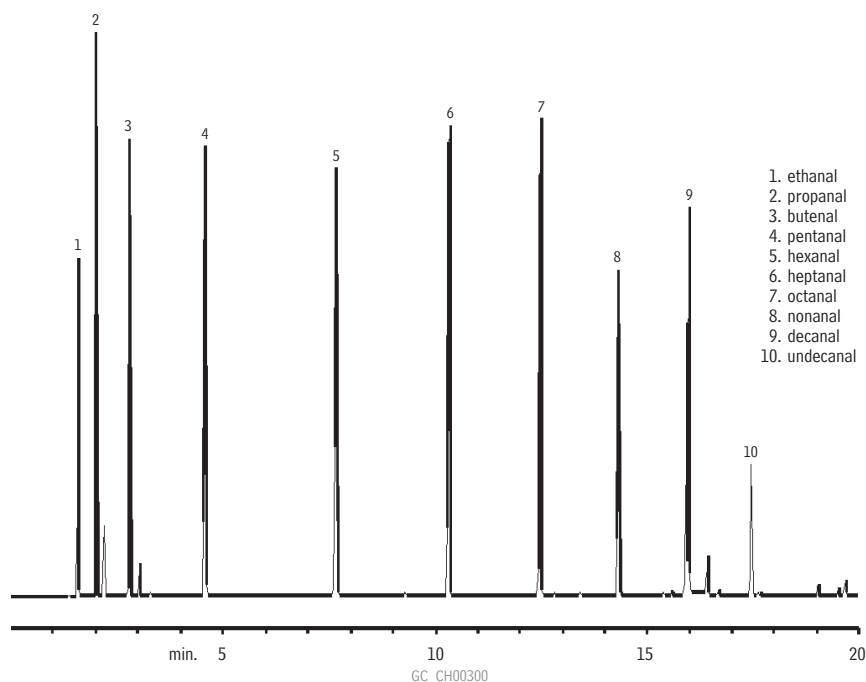
Rtx[®]-Wax Columns (fused silica)

(Crossbond[®] Carbowax[®] polyethylene glycol)

ID	df (µm)	temp. limits*	15-Meter	30-Meter	60-Meter
0.25mm	0.10	20 to 250°C	12405	12408	
	0.25	20 to 250°C	12420	12423	12426
	0.50	20 to 250°C	12435	12438	12441
0.32mm	0.10	20 to 250°C	12406	12409	
	0.25	20 to 250°C	12421	12424	12427
	0.50	20 to 250°C	12436	12439	12442
	1.00	20 to 240/250°C	12451	12454	12457
0.53mm	0.25	20 to 250°C	12422	12425	
	0.50	20 to 250°C	12437	12440	12443
	1.00	20 to 240/250°C	12452	12455	12458

ID	df (µm)	temp. limits	10-Meter	20-Meter
0.10mm	0.10	20 to 250°C	41601	41602
	0.20	20 to 240/250°C	41603	41604

*Maximum temperatures listed are for 15- and 30-meter lengths. Longer lengths may have a slightly reduced maximum temperature.

Sharp, well-resolved peaks for aldehydes, using an Rtx[®]-Wax column.

Column: Rtx[®]-Wax, 30m, 0.25mm ID, 0.50µm (cat.# 12438)
 Inj.: split injection of C2-C11 aldehydes mixture
 On-column conc.: 250ng
 Oven temp.: 40°C (hold 5 min.) to 200°C @ 10°C/min.
 Inj./det. temp.: 200°C
 Carrier gas: hydrogen
 Linear velocity: 35cm/sec. set @ 40°C
 FID sensitivity: 82 x 10¹¹ AFS
 Split ratio: 100:1

free literature

Selection Guide for Polar Wax GC Column Phases

- Performance information about six polyethylene glycol (PEG) columns.
- Applications for each column.

Download your free copy from www.restek.com.

Technical Guide
lit. cat.# 59890