

Organic Acids in Cranberry Juice on Allure® Organic Acids

Peak List:

1. quinic acid
2. malic acid
3. citric acid

Sample:

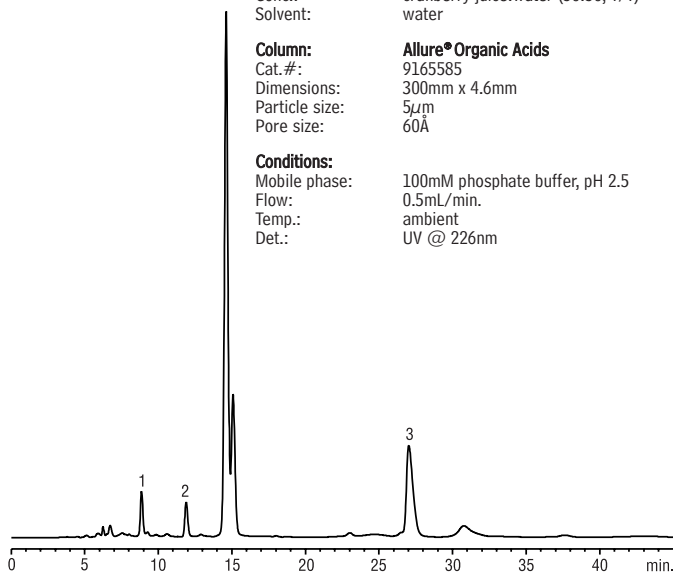
Inj.: 10µL
Conc.: cranberry juice:water (50:50, v/v)
Solvent: water

Column:

Allure® Organic Acids
Cat.#: 9165585
Dimensions: 300mm x 4.6mm
Particle size: 5µm
Pore size: 60Å

Conditions:

Mobile phase: 100mM phosphate buffer, pH 2.5
Flow: 0.5mL/min.
Temp.: ambient
Det.: UV @ 226nm



LC_0236

Sugars on Pinnacle™ II Amino (3µm)

Peak List:

- | Peak List | Conc. (mg/mL) |
|-------------|---------------|
| 1. fructose | 2.0 |
| 2. glucose | 2.1 |
| 3. sucrose | 4.0 |
| 4. maltose | 4.5 |
| 5. lactose | 4.4 |

Sample:

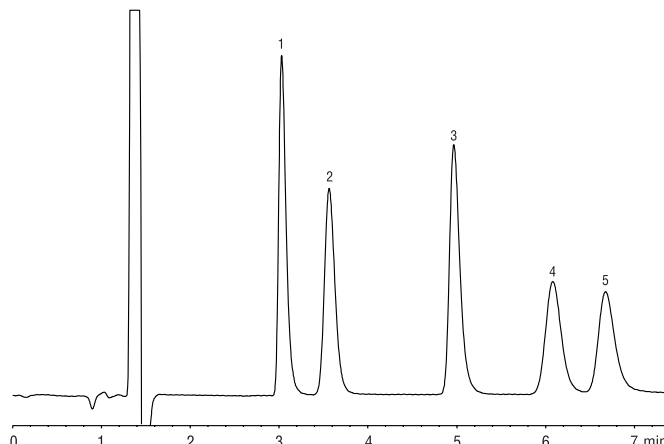
Inj.: 5µL
Solvent: mobile phase

Column:

Pinnacle™ II Amino
Cat.#: 9217365
Dimensions: 150mm x 4.6mm
Particle size: 3µm
Pore size: 110Å

Conditions:

Mobile phase: water:acetonitrile (25:75, v/v)
Flow: 1.5 mL/min.
Temp.: 35°C
Det.: refractive index @ 35°C



LC_0223

Sugars: Maple Syrup on Pinnacle™ II Amino

Peak List:

1. fructose
2. glucose
3. sucrose

Sample:

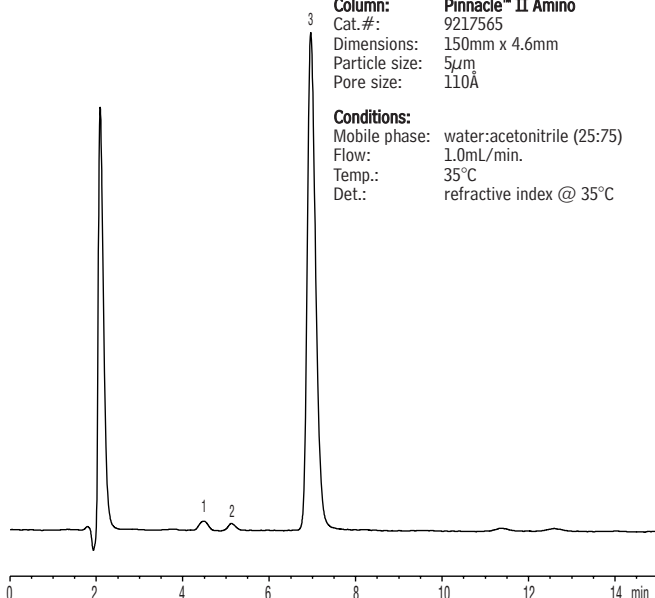
Inj.: 50.0µL
Conc.: 1% maple syrup
in solvent
Solvent: acetonitrile:water
(70:30, v/v)

Column:

Pinnacle™ II Amino
Cat.#: 9217565
Dimensions: 150mm x 4.6mm
Particle size: 5µm
Pore size: 110Å

Conditions:

Mobile phase: water:acetonitrile (25:75)
Flow: 1.0mL/min.
Temp.: 35°C
Det.: refractive index @ 35°C



Vanilla Bean Extract on Pinnacle™ DB C18 (Fast LC)

Sample:

Inj.: 5µL
Conc.: 20% v/v
commercial extract in water

Column:

Pinnacle™ DB C18
Cat.#: 9414555
Dimensions: 50mm x 4.6mm
Particle size: 5µm
Pore size: 140Å

Conditions:

Mobile phase: 0.2% v/v phosphoric acid in
water:methanol (80:20 v/v)
Flow: 2mL/min.
Temp.: 27°C
Det.: UV @ 254nm

Peak List

1. vanillin

Ret. Time (min.)

2.00

