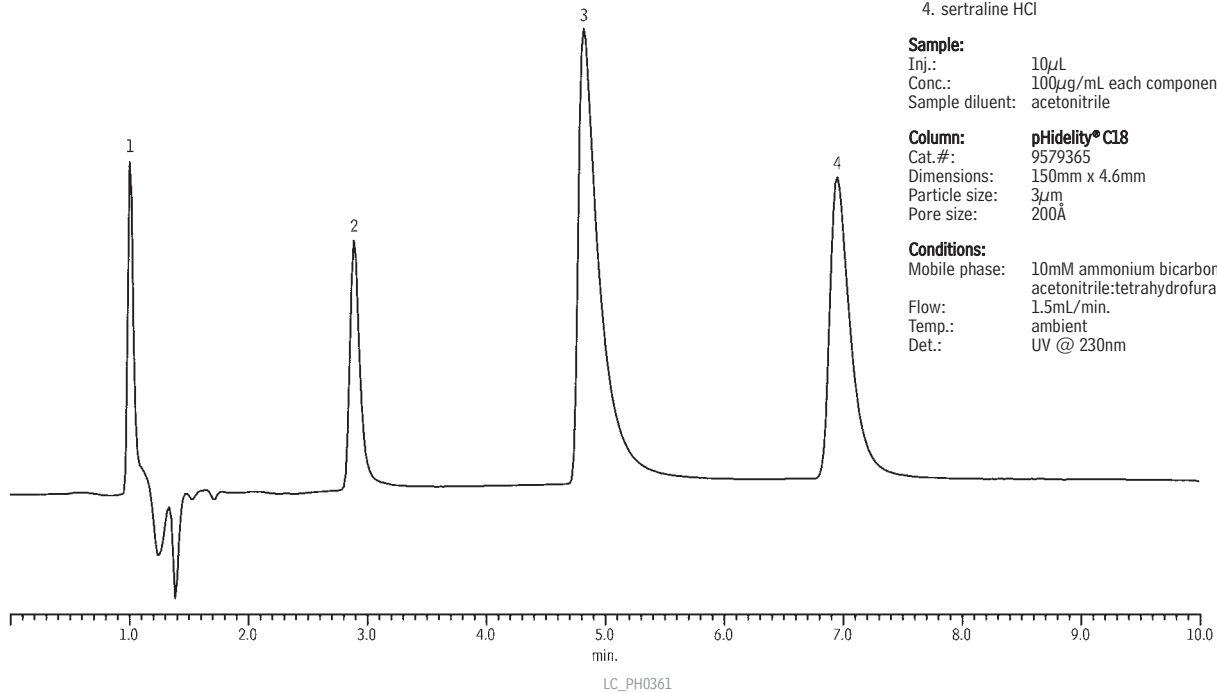


## Selective Serotonin Reuptake Inhibitors (SSRIs) on pHidality® C18, pH 11



## Peak List

1. uracil (marker)
2. fluvoxamine maleate
3. fluoxetine
4. sertraline HCl

## Sample:

Inj.: 10 $\mu$ L  
 Conc.: 100 $\mu$ g/mL each component  
 Sample diluent: acetonitrile

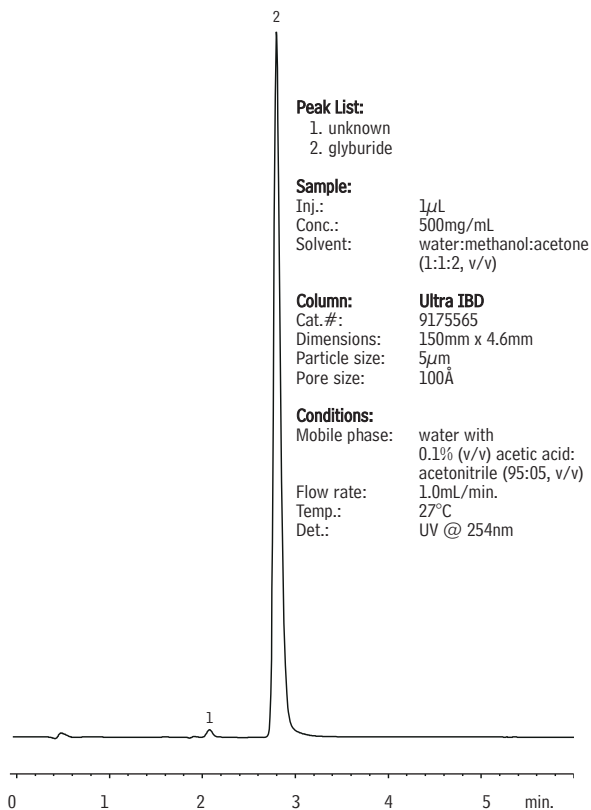
## Column: pHidality® C18

Cat.#: 9579365  
 Dimensions: 150mm x 4.6mm  
 Particle size: 3 $\mu$ m  
 Pore size: 200Å

## Conditions:

Mobile phase: 10mM ammonium bicarbonate (pH 11):  
 acetonitrile:tetrahydrofuran, 45:45:10  
 Flow: 1.5mL/min.  
 Temp.: ambient  
 Det.: UV @ 230nm

## Anti-Diabetic Glyburide (Glybenclamide) on Ultra IBD



## Peak List:

1. unknown
2. glyburide

## Sample:

Inj.: 1 $\mu$ L  
 Conc.: 500mg/mL  
 Solvent: water:methanol:acetone  
 (1:1:2, v/v)

## Column: Ultra IBD

Cat.#: 9175565  
 Dimensions: 150mm x 4.6mm  
 Particle size: 5 $\mu$ m  
 Pore size: 100Å

## Conditions:

Mobile phase: water with  
 0.1% (v/v) acetic acid:  
 acetonitrile (95:05, v/v)  
 Flow rate: 1.0mL/min.  
 Temp.: 27°C  
 Det.: UV @ 254nm

## Anti-Ulcerative Cimetidine on Ultra IBD (LC/MS)

## Peak List:

1. cimetidine

## Sample:

Inj.: 5 $\mu$ L  
 Conc.: 10 $\mu$ g/mL  
 Solvent: mobile phase

## Column: Ultra IBD

Cat.#: 9175552  
 Dimensions: 50mm x 2.1mm  
 Particle size: 5 $\mu$ m  
 Pore size: 100Å

## Conditions:

Mobile phase: water:acetonitrile  
 (20:80, v/v)  
 Flow: 0.2mL/min.  
 Column temp.: ambient  
 Det.: PE/Sciex API 150 EX  
 Interface: turbo ion spray  
 Ion mode: positive  
 Ion spray voltage: 4800V  
 Temp.: 350°C  
 Orifice: 10V  
 Ring: 100V  
 Auxiliary gas: 6000cc/min.

