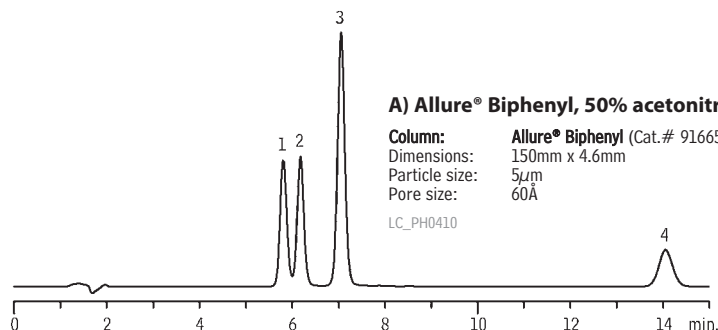


Non-Steroidal Anti-inflammatory Drugs (NSAIDs) on Allure® Biphenyl

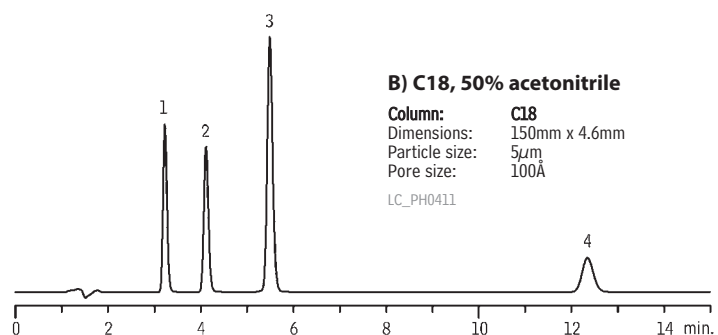
new!

In acetonitrile, retention of NSAIDs on an Allure® Biphenyl column is comparable to retention on a C18 column and **elution order is the same**.



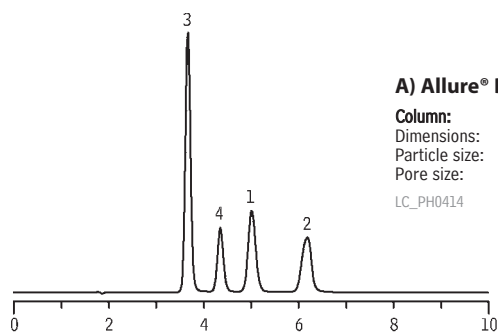
Sample:
 Inj.: 5µL
 Conc.: ~300µg/mL each component
 Sample diluent: mobile phase

1. sulindac
2. piroxicam
3. ketoprofen
4. diclofenac



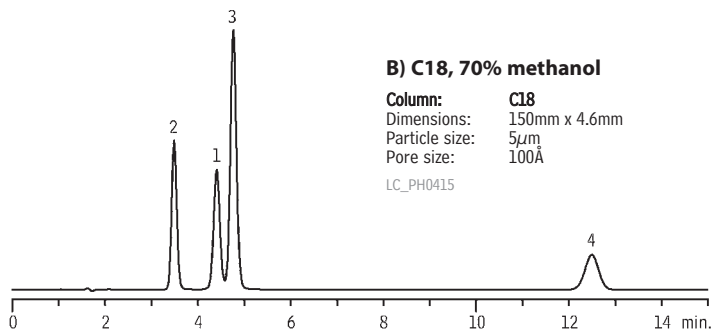
Conditions:
 Mobile phase: 0.5% formic acid in water (pH 2.25):0.1% formic acid in acetonitrile, 50:50 (v/v)
 Flow: 1.0mL/min.
 Temp.: ambient
 Det.: UV @ 254nm

In methanol, retention & selectivity of NSAIDs are much greater on an Allure® Biphenyl column, compared to a C18 column, and **elution order changes**.



Sample:
 Inj.: 5µL
 Conc.: ~300µg/mL each component
 Sample diluent: mobile phase

1. sulindac
2. piroxicam
3. ketoprofen
4. diclofenac



Conditions:
 Mobile phase: 0.5% formic acid in water (pH 2.25):0.1% formic acid in methanol, 30:70 or 10:90 (v/v)
 Flow: 1.0mL/min.
 Temp.: ambient
 Det.: UV @ 254nm