

Admixtures: Analgesic Ibuprofen and Decongestant Pseudoephedrine on Allure® Basix

Peak List:

1. uracil
2. ibuprofen
3. pseudoephedrine

Sample:

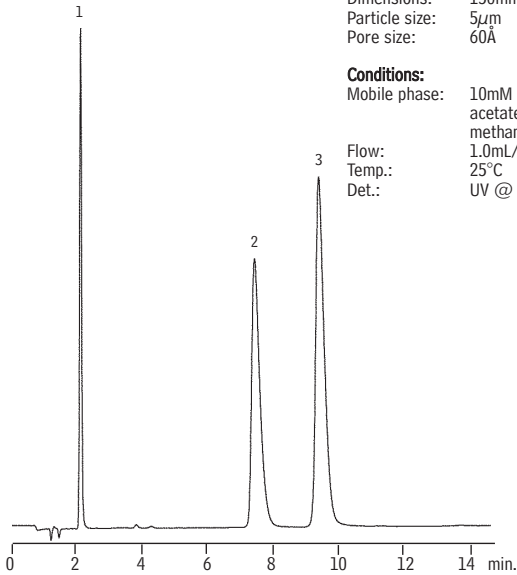
Inj.: 5µL
 Conc.: 200µg/mL
 Solvent: mobile phase

Column:

Allure® Basix
 Cat.#: 9161565
 Dimensions: 150mm x 4.6mm
 Particle size: 5µm
 Pore size: 60Å

Conditions:

Mobile phase: 10mM ammonium acetate, pH 6.9: methanol (75:25, v/v)
 Flow: 1.0mL/min.
 Temp.: 25°C
 Det.: UV @ 210nm



LC_0098

Admixtures: Analgesic Acetaminophen, Decongestant Pseudoephedrine and Stimulant Caffeine on Allure® Basix

Peak List:

1. sample solvent
2. caffeine
3. acetaminophen
4. pseudoephedrine

Sample:

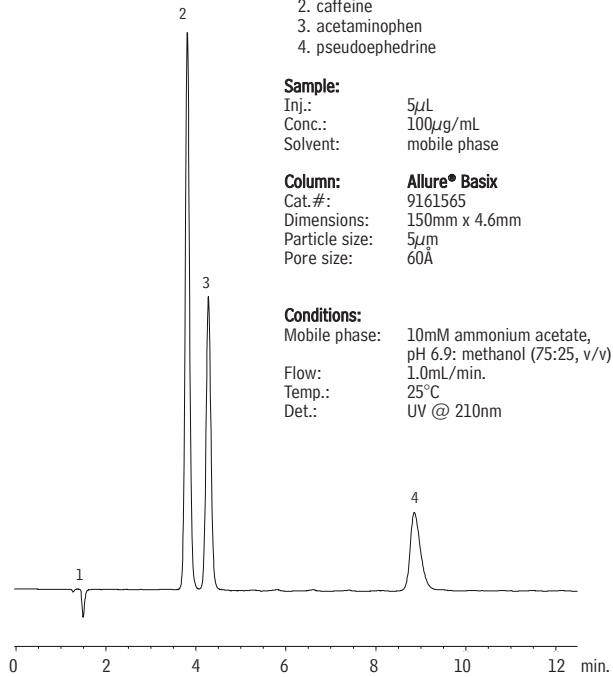
Inj.: 5µL
 Conc.: 100µg/mL
 Solvent: mobile phase

Column:

Allure® Basix
 Cat.#: 9161565
 Dimensions: 150mm x 4.6mm
 Particle size: 5µm
 Pore size: 60Å

Conditions:

Mobile phase: 10mM ammonium acetate, pH 6.9: methanol (75:25, v/v)
 Flow: 1.0mL/min.
 Temp.: 25°C
 Det.: UV @ 210nm



LC_0097

Admixtures: Hydrocodone Bitartrate/Acetaminophen by USP 25 on Ultra C18

Peak List:	Conc. (µg/mL)	Ret. Time (min.)	RRT	Tailing	Resolution	Inj. %RSD (n=5)
1. acetaminophen	0.76	3.304	1.0	1.1	—	1.1
2. hydrocodone bitartrate	0.0076	6.664	2.0	1.1	17.0	0.9

Sample:

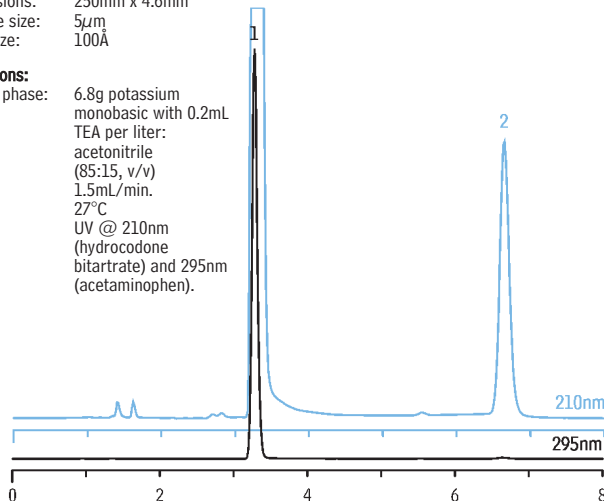
Inj.: 25µL
 Sample: 500mg acetaminophen with 5mg hydrocodone bitartrate (tablet)
 Solvent: mobile phase

Column:

Ultra C18
 Cat.#: 9174575
 Dimensions: 250mm x 4.6mm
 Particle size: 5µm
 Pore size: 100Å

Conditions:

Mobile phase: 6.8g potassium monobasic with 0.2mL TEA per liter: acetonitrile (85:15, v/v)
 Flow: 1.5mL/min.
 Temp.: 27°C
 Det.: UV @ 210nm (hydrocodone bitartrate) and 295nm (acetaminophen).



Admixtures: Expectorant/Antitussive Guaifenesin and Narcotic Analgesic Codeine on Ultra Phenyl

Peak List:	Conc. (µg/mL)
1. codeine	825
2. guaifenesin	375

Sample:

Inj.: 5µL
 Solvent: methanol:water (50:50)

Column:

Ultra Phenyl
 Cat.#: 9105565
 Dimensions: 150mm x 4.6mm
 Particle size: 5µm
 Pore size: 100Å

Conditions:

Mobile phase: 10mM ammonium formate, pH 2.5: acetonitrile (80:20, v/v)
 Flow rate: 1.2mL/min.
 Temp.: 25°C
 Det.: UV @ 280nm

