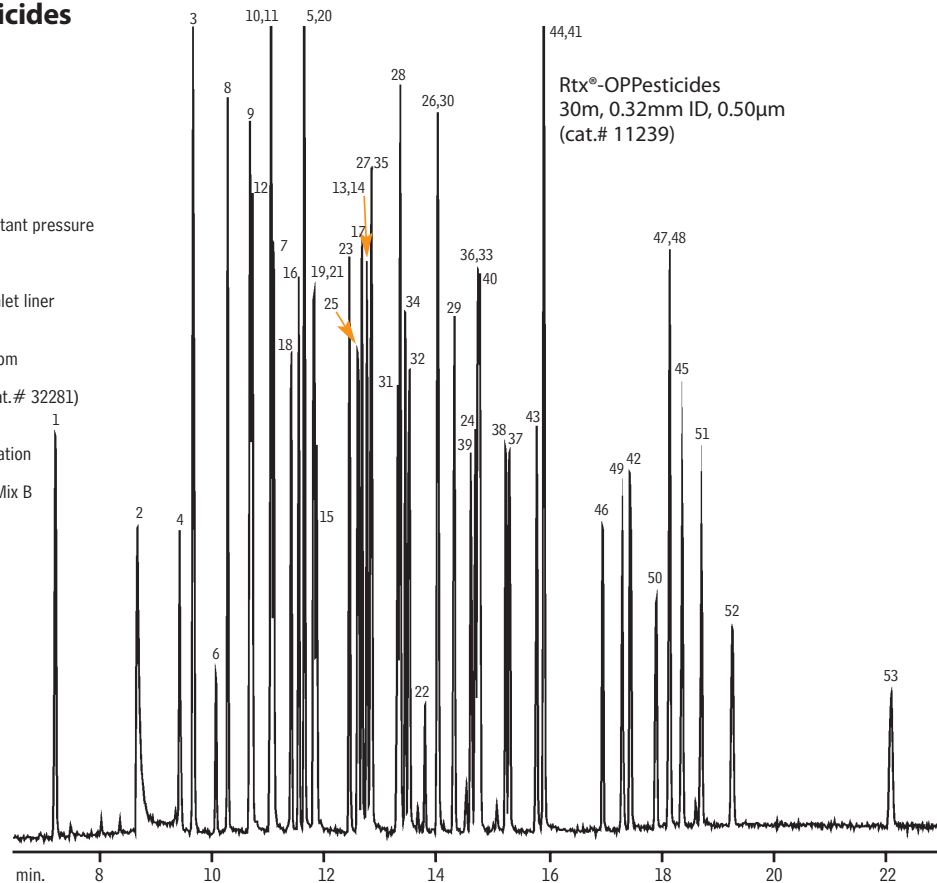


**Organophosphorus Pesticides  
US EPA Method 8141A  
Rtx®-OPPesticides &  
Rtx®-OPPesticides2**

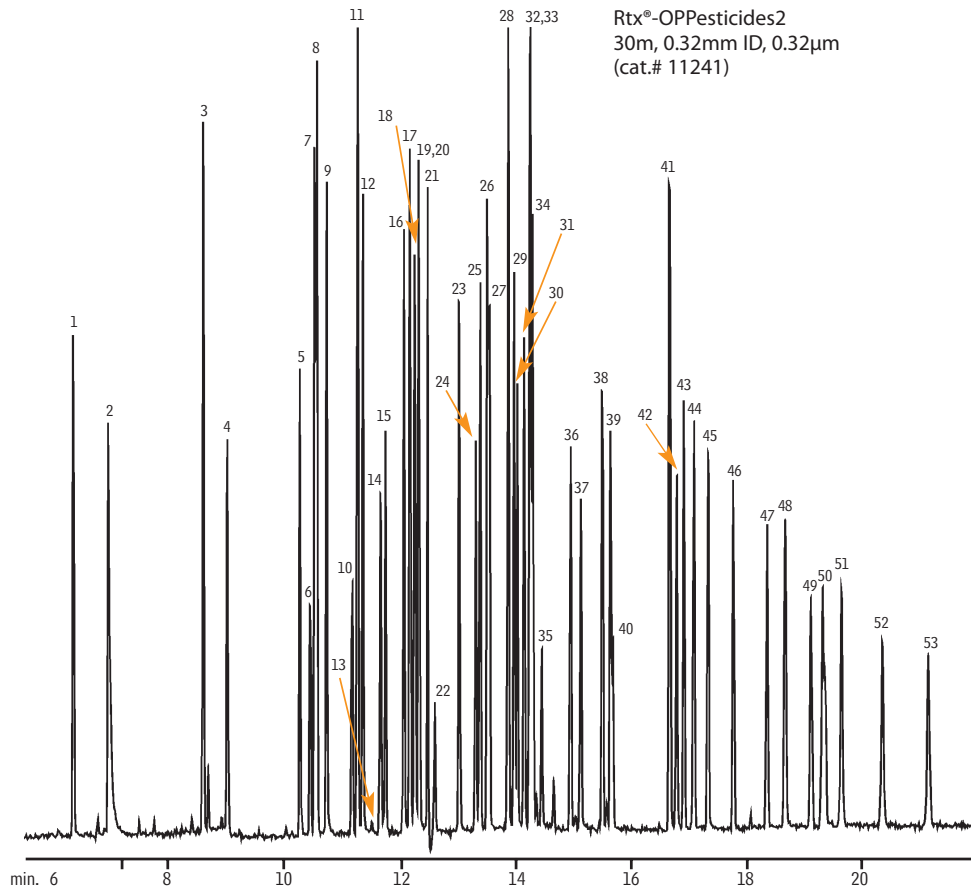
- Dual-column injector

GC: splitless, purge on 1.0 min. constant pressure  
 Oven temp.: 80°C (hold 0.5 min.) to 280°C @ 12°C/min. (hold 10 min.)  
 Inlet: 200°C  
 Inlet liner: 4mm Siltek® single gooseneck inlet liner  
 Detector: FPD @ 250°C  
 Dead time: 1.03 min. @ 80°C  
 Injection: 1µL US EPA Method 8141A Custom Standard Mixes (100ng/mL)  
 Triphenylphosphate Standard (cat.# 32281)  
 Tributylphosphate Standard (cat.# 32280)  
 8140/8141 OP Pesticides Calibration Mix A (cat.# 32277)  
 8141 OP Pesticides Calibration Mix B (cat.# 32278)

- dichlorvos
- hexamethylphosphoramide
- mevinphos
- trichlorfon
- TEPP
- demeton-O
- tributyl phosphate (SS)
- thionazin
- ethoprop
- naled
- sulfotepp
- phorate
- dicrotophos
- monocrotophos
- demeton-S
- terbufos
- dimethoate
- diazinon
- dioxathion
- fonophos
- disulfoton
- phosphamidon isomer (breakdown product)
- dichlorofenthion
- phosphamidon
- chlorpyrifos methyl
- parathion-methyl
- ronnel
- aspon
- fenitrothion
- malathion
- chlorpyrifos
- trichloronate
- parathion-ethyl
- fenthion
- merphos
- chlorfenvinphos
- crotoxyphos
- stirofos
- tokuthion
- merphos oxone (breakdown product)
- ethion
- fensulfothion
- bolstar
- carbophenothion
- famphur
- triphenyl phosphate (SS)
- EPN
- phosmet
- leptophos
- tri-*o*-cresyl phosphate
- azinphos-methyl
- azinphos-ethyl
- coumaphos



Rtx®-OPPesticides  
30m, 0.32mm ID, 0.50µm  
(cat.# 11239)



Rtx®-OPPesticides2  
30m, 0.32mm ID, 0.32µm  
(cat.# 11241)

GC APPLICATIONS | ENVIRONMENTAL

