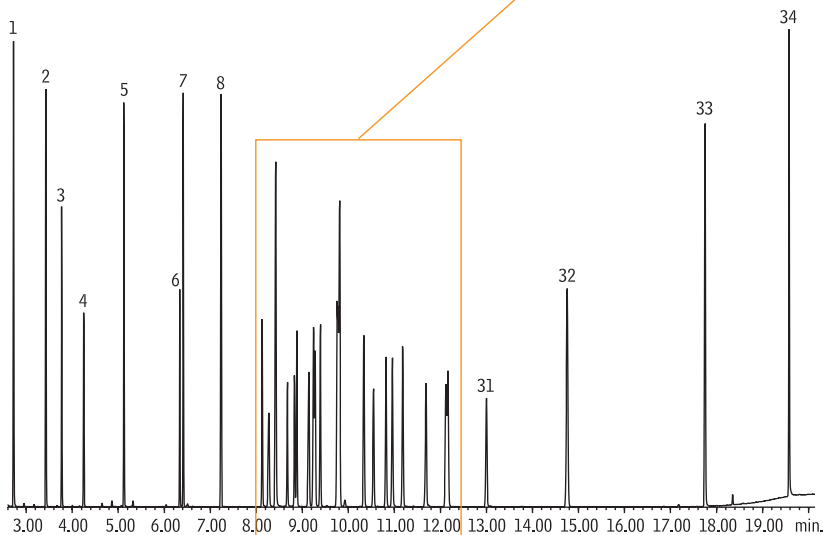
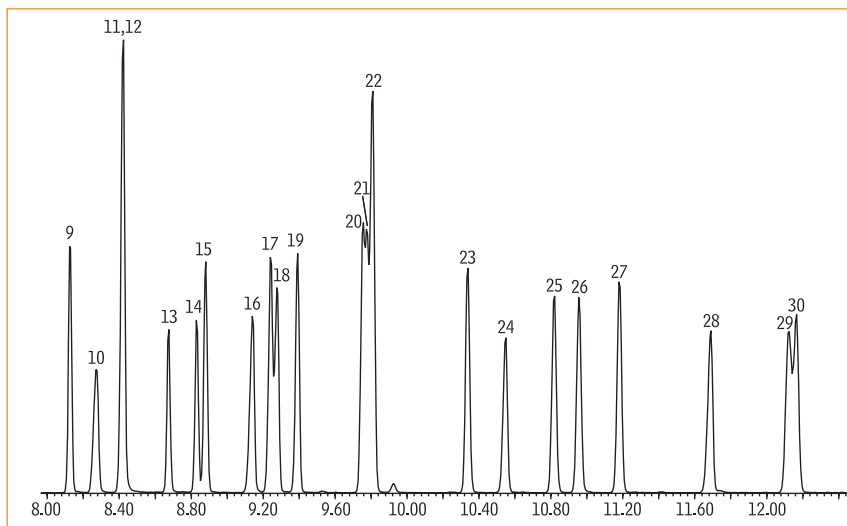


**Pesticides**  
**Minnesota Ag List 1**  
**Rxi®-1ms**

*Rxi® Technology!*

1. 2-fluorophenol (SS)
2. phenol-d6 (SS)
3. 1,4-dichlorobenzene-d4 (IS)
4. nitrobenzene-d5 (SS)
5. naphthalene-d8 (IS)
6. EPTC
7. 2-fluorobiphenyl (SS)
8. acenaphthene-d10 (IS)
9. propachlor
10. desisopropyl atrazine
11. desethyl atrazine
12. 2,4,6-tribromophenol (SS)
13. ethalfuralin
14. trifluralin
15. phorate
16. simazine
17. prometon
18. atrazine
19. propazine
20. terbufos
21. fonofos
22. phenanthrene-d10 (IS)
23. triallate
24. metribuzin
25. dimethenamid
26. acetochlor
27. alachlor
28. cyanazine
29. metolachlor
30. chlorpyrifos
31. pendimethalin
32. *p*-terphenyl-d14 (SS)
33. chrysene-d12 (IS)
34. perylene-d12 (IS)



GC\_EV00837

Column: Rxi®-1ms, 30m, 0.25mm ID, 0.25µm (cat.# 13323)  
 Sample: Minnesota Ag List 1 Pesticides Mix A (cat.# 32406),  
 Minnesota Ag List 1 Pesticides Mix B (cat.# 32407),  
 SV Internal Standard Mix (cat.# 31206),  
 B/N Surrogate Mix (4/89 SOW) (cat.# 31024),  
 Acid Surrogate Mix (4/89 SOW) (cat.# 31025)  
 Inj.: 1.0µL, 10µg/mL each analyte (internal standards 25µg/mL), split (10:1)  
 4mm Drilled Uniliner® inlet liner (hole near bottom) (cat.# 20771)  
 Instrument: Agilent 6890  
 Inj. temp.: 250°C  
 Carrier gas: helium, constant flow  
 Flow rate: 1.2mL/min.  
 Oven temp.: 70°C (hold 1 min.) to 180°C @ 20°C/min., to 230°C @ 5°C/min., to 325°C @ 40°C/min. (hold 3.5 min.)  
 Det.: Agilent 5973 MSD  
 Transfer line temp.: 280°C  
 Scan range: 35-550amu  
 Solvent delay: 2.50 min.  
 Tune: DFTPP  
 Ionization: EI

GC APPLICATIONS | ENVIRONMENTAL