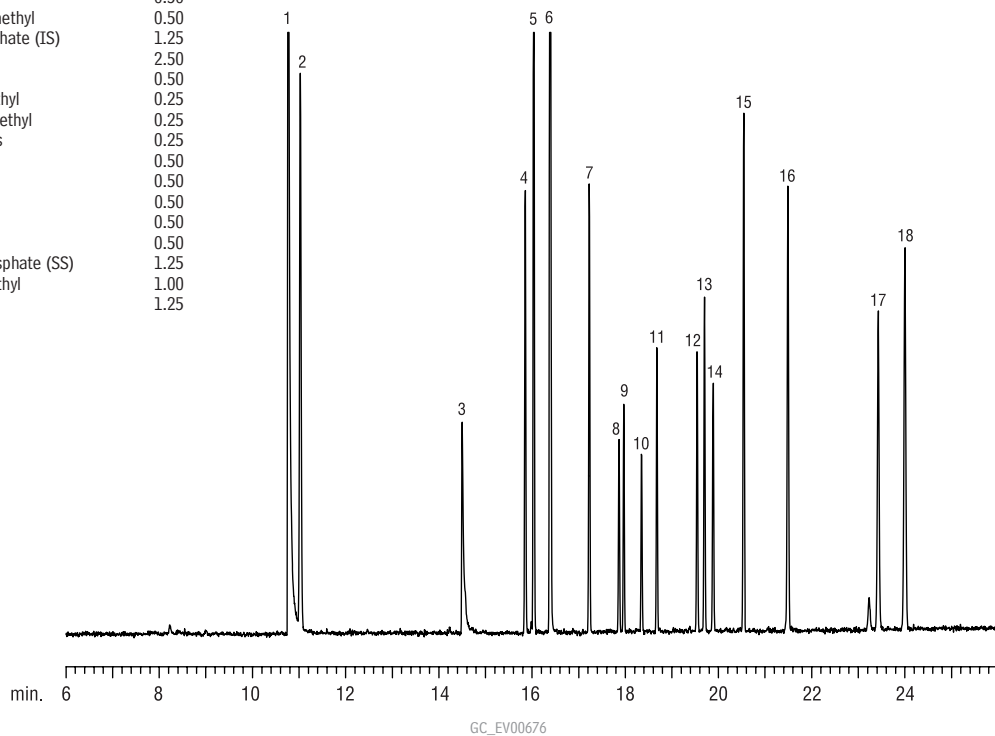


Organophosphorus Pesticides (European) Rtx®-CLPesticides

	Concentration on-column (ng)
1. methamidophos	1.25
2. dichlorvos	1.25
3. acephate	0.50
4. demeton-S-methyl	0.50
5. tributylphosphate (IS)	1.25
6. omethoate	2.50
7. dimethoate	0.50
8. tolclofos-methyl	0.25
9. pirimiphos methyl	0.25
10. chlorpyrifos	0.25
11. malathion	0.50
12. tokuthion	0.50
13. methidathion	0.50
14. profenfos	0.50
15. ethion	0.50
16. triphenylphosphate (SS)	1.25
17. azinphos-methyl	1.00
18. pyrazophos	1.25



Column: Rtx®-CLPesticides, 30m, 0.32mm ID, 0.50 μ m (cat.# 11139)
 Sample: European OPP Mix (cat.# 32418)
 100–1000 μ g/mL in acetone
 Inj.: 0.5 μ L direct, open-top Siltek® Drilled Uniliner®
 inlet liner (cat.# 21055-214.5)
 Inj. temp.: 250°C
 Carrier gas: helium, constant pressure
 Linear velocity: 35cm/sec. @ 80°C
 Oven temp.: 80°C (hold 1 min.) to 150°C @ 7°C/min.
 to 280°C @ 15°C/min. (hold 10 min.)
 Det.: FPD @ 280°C

Get More!

Environmental
Related Articles Online

www.restek.com/environmental

