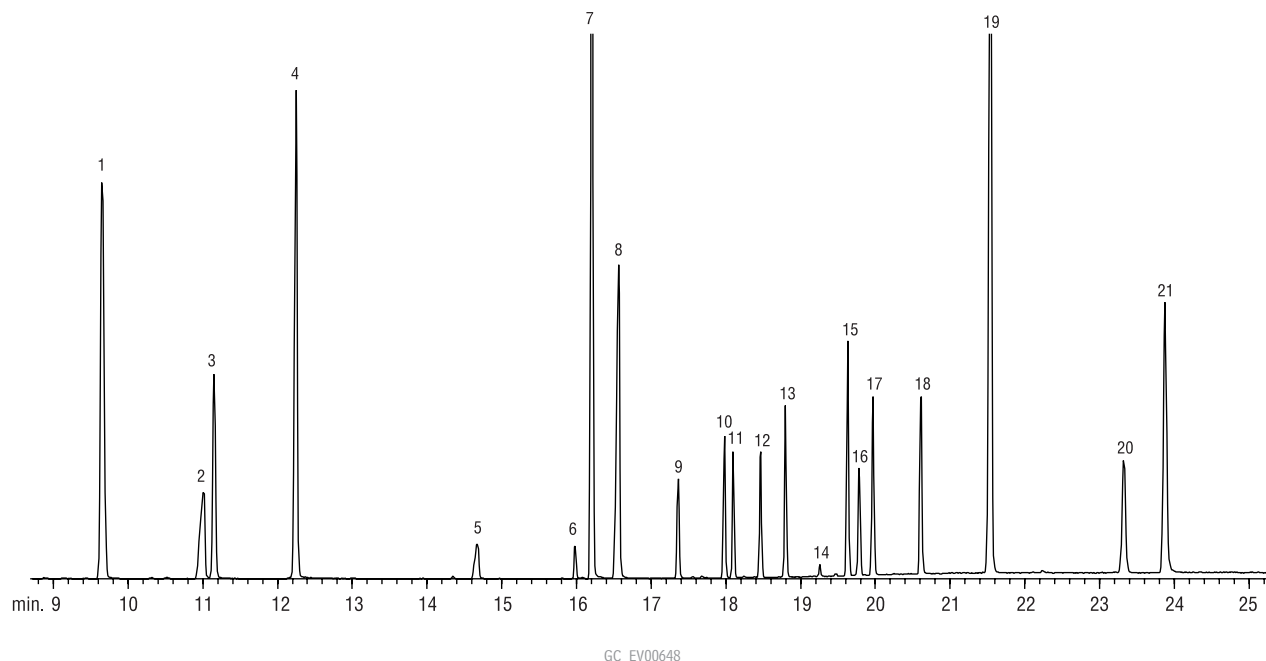


Organophosphorus Pesticides (European) Rtx®-CLPesticides



Column: Rtx®-CLPesticides, 30m, 0.25mm ID, 0.25 μ m (cat.# 11123)
 Sample: Custom European Mix (call for details)
 1-bromo-2-nitrobenzene (cat.# 32279)
 4-chloro-3-nitrobenzotrifluoride (cat.# 32282)
 tributylphosphate (cat.# 32280)
 triphenylphosphate (cat.# 32281)
 Inj.: 1.0 μ L splitless (hold 0.4 min.)
 4mm double gooseneck inlet liner (cat.# 20785)
 Inj. temp.: 250°C
 Carrier gas: helium, constant flow, 6psi head pressure
 Flow rate: 0.75mL/min.
 Linear velocity: 28cm/sec.*
 Dead time: 1.82 min. @ 80°C
 Oven temp.: 80°C (hold 1.0 min.) to 150°C @ 7°C/min. (no hold)
 to 280°C @ 15°C/min. (hold 7 min.)
 Det.: Agilent 5971A GC/MS
 Transfer line temp.: 280°C
 Scan range: 35–400amu
 Solvent Delay: 5 min.
 Tune: PFTBA
 Ionization: EI

Compound	Conc. on-column (ng)
1. 4-chloro-3-nitro-trifluoride	100
2. methamidophos	50
3. dichlorvos	50
4. 1-bromo-2-nitrobenzene	100
5. acephate	20
6. demeton-S-methyl	20
7. TBP (IS)	100
8. omethoate	100
9. dimethoate	20
10. tolclofos-methyl	10
11. pirimiphos methyl	10
12. chlorpyrifos	10
13. malathion	20
14. quinalphos	10
15. tokuthion (prothiofos)	20
16. methidathion	20
17. profenfos	20
18. ethion	20
19. TPP (SS)	100
20. azinphos-methyl	40
21. pyrazophos	50

*This mix was prepared for FPD analyses. Peaks will be equivalent height with FPD detection if linear velocity is set at 28cm/sec. (0.32mm ID column).

a plus 1 story

"Thank you for being a top notch GC Analytical Supply Company that always continues to offer newer products & services."

John T. Brunette, Chemist, Bausch & Lomb