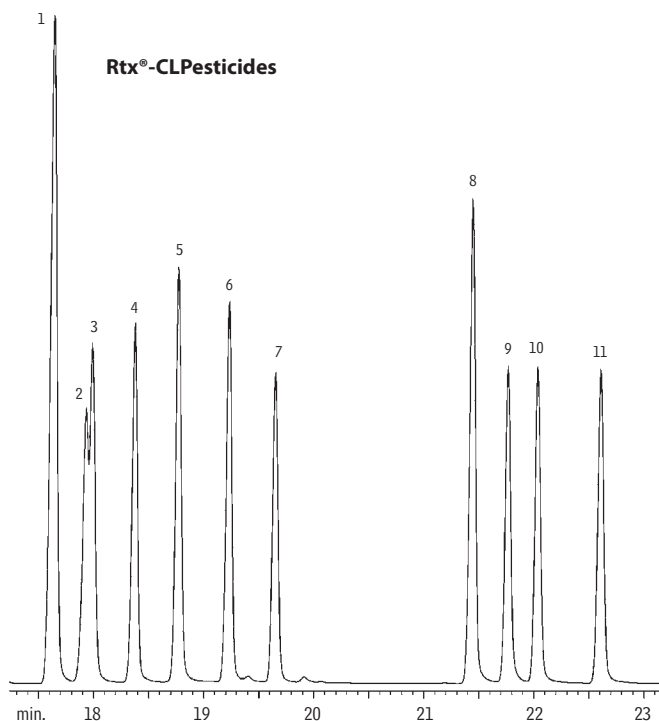


Pesticides/Herbicides

Nitrogen/Phosphorus Pesticides & Herbicides

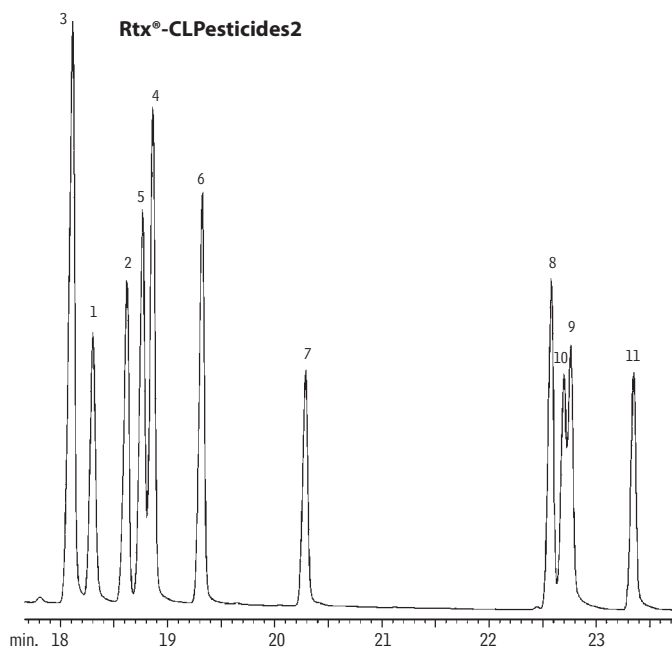
US EPA Method 619

Rtx[®]-CLPesticides & Rtx[®]-CLPesticides2 (dual column analysis)



1. prometon
2. simazine
3. atraton
4. propazine
5. atrazine
6. terbutylazine
7. secbumeton
8. simetryne
9. ametryne
10. prometryne
11. terbutryne

CAS No.
1610-18-0
122-34-9
1610-17-9
139-40-2
1912-24-9
5915-41-3
26259-45-0
1014-70-6
834-12-8
7287-19-6
886-50-0



GC_EV00056

Columns: Rtx[®]-CLPesticides, 30m, 0.32mm ID, 0.50 μ m (cat.# 11139) and
 Rtx[®]-CLPesticides2, 30m, 0.32mm ID, 0.25 μ m (cat.# 11324)
 with a 5m, 0.32mm ID guard column (cat.# 10044) and a "Y" Press-Tight[®] connector (cat.# 20403)
 Inj.: Direct injection using a Uniliner[®] inlet liner (cat.#21303) and adaptor for an Agilent 5890 (cat.# 20964)
 Conc.: On-column, 50pg each compound
 Oven temp.: 100°C (hold 0 min.) to 250°C @ 4°C/min. (hold 5 min.)
 Inj./det. temp.: 250°C/275°C
 Carrier gas: hydrogen, 9.65psi constant pressure
 GC: Agilent 6890 with purged packed injection port