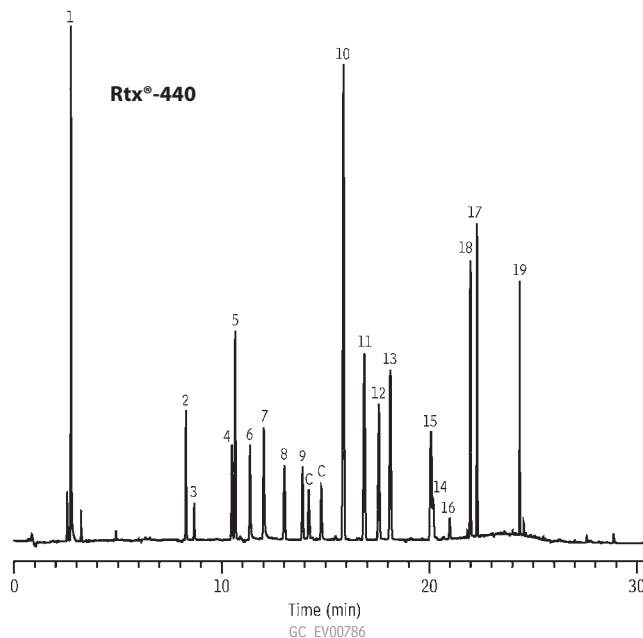
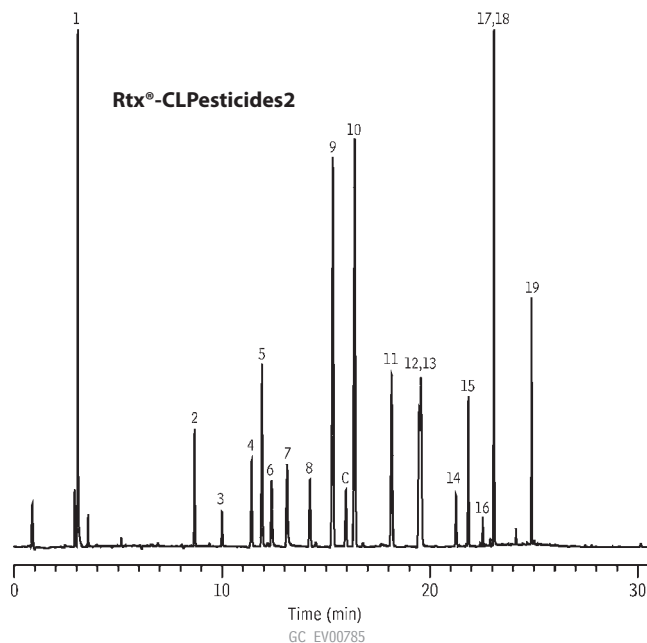


**Organochlorine Pesticides**  
**US EPA Method 8151A**  
**Rtx®-CLPesticides2 & Rtx®-440**



Columns: Rtx®-CLPesticides2, 30m, 0.25mm ID, 0.50 $\mu$ m (cat.# 11325)  
 Rtx®-440, 30m, 0.25mm ID, 0.50 $\mu$ m (cat.# 12939)

Sample: derivatized (methyl ester) herbicide mixes in hexane:  
 Herbicide Mix #1 (cat.# 32055) 200 $\mu$ g/mL each component  
 Herbicide Mix #2 (cat.# 32057) 200 $\mu$ g/mL each component  
 Herbicide Mix #3 (cat.# 32059) 20,000 $\mu$ g/mL each component  
 Herbicide Mix #4 (cat.# 32062) 200 $\mu$ g/mL each component  
 Herbicide Surrogate (cat.# 32050) 200 $\mu$ g/mL 2,4-dichlorophenyl acetic acid methyl ester (DCAA methyl ester) all diluted 1000x in hexane

Inj.: 1.0 $\mu$ L splitless (hold 0.75 min.), 2mm Siltek® treated single gooseneck inlet liner (cat.# 20961)

Inj. temp.: 275°C

Carrier gas: hydrogen, constant pressure

Linear velocity: 71cm/sec. @ 110°C

Oven temp.: 50°C (hold 1 min.) to 140°C @ 20°C/min. to 185°C @ 3°C/min. to 310°C @ 25°C/min. (hold 5 min.)

Det.: ECD @ 330°C

Instrument: Shimadzu GC-2010 with ECD and FID

1. dalapon
2. 3,5 dichlorobenzoic acid methyl ester
3. 4-nitroanisole
4. DCAA methyl ester(SS)
5. dicamba methyl ester
6. MCPP methyl ester
7. MCPA methyl ester
8. dichlorprop methyl ester
9. 2,4-D methyl ester
10. pentachloroanisole
11. 2,4,5-TP methyl ester
12. chloramben methyl ester
13. 2,4,5-T methyl ester
14. 2,4-DB methyl ester
15. dinoseb methyl ester
16. bentazon methyl deriv.
17. DCPA methyl ester
18. picloram methyl ester
19. acifluorfen methyl ester

C=sample contaminant