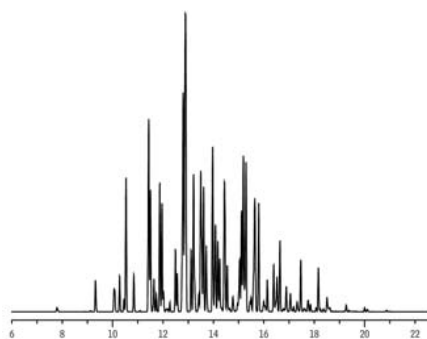
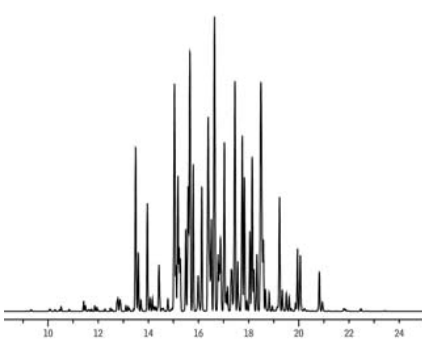


PCB Mixtures

Aroclor 1242 PCBs
Rtx®-PCB

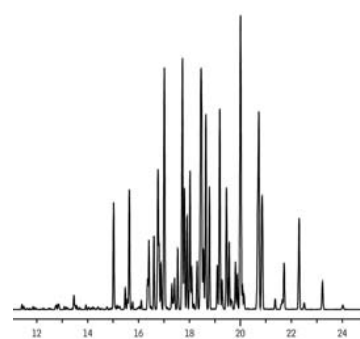
GC_EV00752

Sample: 200ng/mL Aroclor 1242 (cat.# 32009)

Aroclor 1254 PCBs
Rtx®-PCB

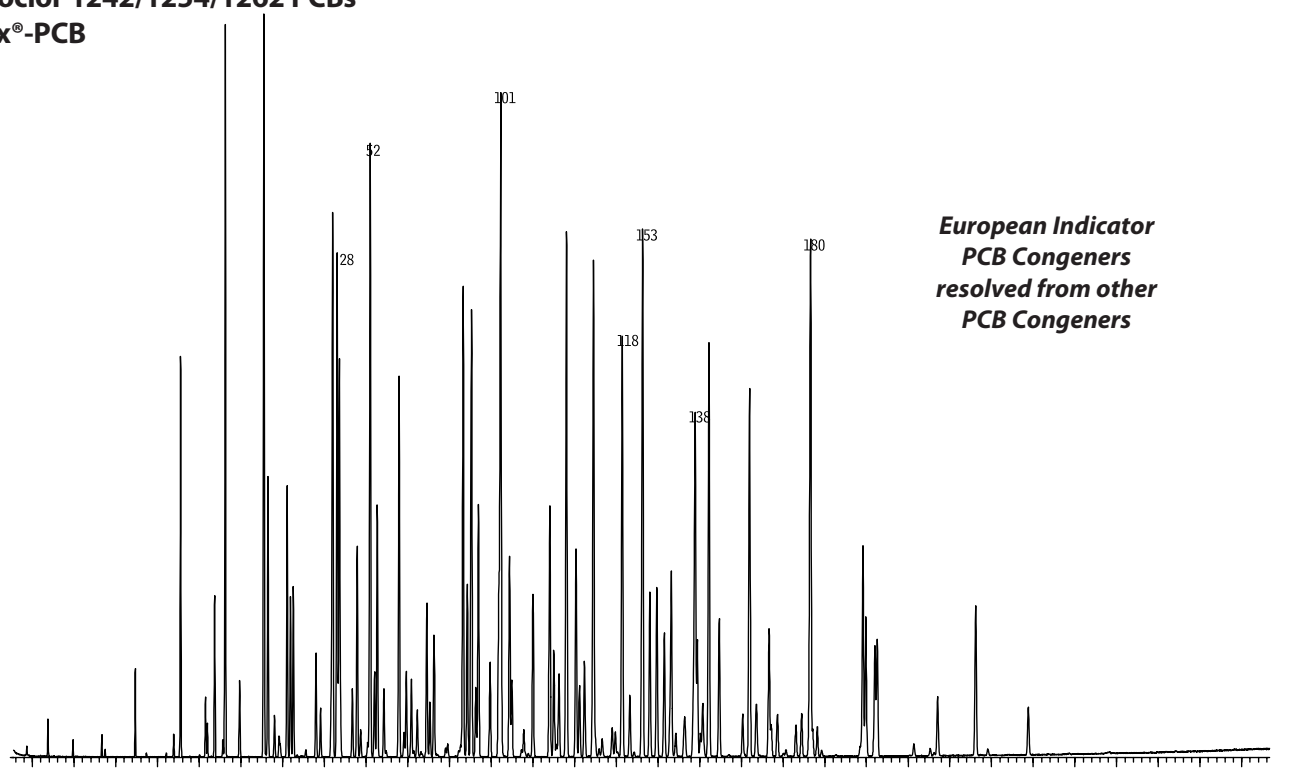
GC_EV00753

Sample: 200ng/mL Aroclor 1254 (cat.# 32011)
 Column: Rtx®-PCB, 30m, 0.25mm ID, 0.25µm (cat.# 13223)
 Inj.: 1.0µL splitless (hold 0.75 min.), 3.5mm ID single gooseneck inlet liner (cat.# 20962)
 Inj. temp.: 250°C
 Carrier gas: hydrogen, constant pressure
 Linear velocity: 71cm/sec. @ 110°C
 Oven temp.: 100°C (hold 1.0 min.) to 300°C @ 10°C/min. (hold 4 min.)
 Det.: ECD @ 310°C

Aroclor 1260 PCBs
Rtx®-PCB

GC_EV00754

Sample: 200ng/mL Aroclor 1260 (cat.# 32012)

Aroclor 1242/1254/1262 PCBs
Rtx®-PCB

**European Indicator
PCB Congeners
resolved from other
PCB Congeners**

6.00 8.00 10.00 12.00 14.00 16.00 18.00 20.00 22.00 24.00 26.00 28.00 30.00 32.00 34.00 36.00 38.00 40.00 42.00 44.00 46.00 48.00 50.00 52.00 54.00 56.00 58.00 60.00 62.00 64.00 min.
GC_EV00767

Column: Rtx®-PCB, 60m, 0.25mm ID, 0.25µm (cat.# 13226)
 Sample: Aroclor 1242 (cat.# 32009), 1254 (cat.# 32011), 1262 (cat.# 32409), 333ppm each
 Inj.: 1.0µL splitless (hold 0.75 min.), 4mm single gooseneck inlet liner w/wool (cat.# 22405)
 Inj. temp.: 280°C
 Carrier gas: helium, constant flow
 Flow rate: 1.1mL/min.
 Oven temp.: 100°C (hold 1 min.) to 200°C @ 30°C/min., to 320°C @ 2°C/min. (hold 1 min.)
 Det.: MS
 Transfer line temp.: 280°C
 Scan range: 50 to 550amu
 Ionization: EI
 Mode: scan